

## 5.2.2 Mittagong

### Existing Streetscape Character

Paved verges, verandahs and a six-lane carriageway with centreline planting dominate Mittagong's main street. The urban form of Main Street is comprised of a collection of disconnected single and double storey commercial buildings on either side of the main transport route. On-road parallel parking occurs along both sides of the street with additional angled parking provided between Queen Street and Pioneer Street. Golden Ash is consistently used as the street tree along either side of Main Street in the Urban Centre with Crepe-Myrtle planted in the centre median. The Golden Ash are showing signs of stress and have poor vigour. Mature Liquidambar trees on Main Street between Louisa Street and Beatrice Street are part of the 'Golden Mile' planting believed to be in association with Memorial Park Mittagong. A number of these trees have been removed recently due to poor structure and health or are currently compromised by clearance pruning for power lines.

Beyond the main road, the existing streetscape character is extremely varied. The street tree population is mostly comprised of small trees that are only capable of reaching a mature height of less than 10m. Many of the large trees that contribute to the character of the street and urban area are in parks or on private properties.

### Physical Influences

Soils in the Mittagong area are derived mainly from Wianamatta Group Shale geology and are likely to be shallow to moderately deep loams or clays. Soils on crests and upper slopes will typically be shallower and well drained while lower slopes will be deeper and with poor drainage. Three small distinct areas within Mittagong are located on Hawkesbury Sandstone geology and are likely to be shallow sandy soils of low fertility. These include the north-western half of Welby, the area surrounding and to the south of the Highlands Marketplace and western half of Willow Vale.

The road layout is divided into groups of gridded streets separated by creeks, mountains and major transport routes. The tighter grids are generally located on the gentle slopes while the informal and wider grids are on the undulating hills and on steeper slopes. The railway line and main road create a physical barrier through the urban centre for vehicles and pedestrians.

Overhead power lines are a significant constraint to street tree planting for most of Mittagong. 85% of streets have a significant conflict between power lines and street trees, which has a significant impact on the character of the area. Verge widths and treatments vary greatly across the urban area. Verge widths of between 3.5 to 5m are present on nearly 50% of all streets in Mittagong with a further 33% with large verges of greater than 5m.

### Existing Dominant Tree Species

- Fraxinus excelsior 'Aurea'
- Lagerstroemia indica
- Callistemon sp.
- Liquidambar styraciflua
- Cupressus torulosa
- Prunus x blireana
- Prunus serrulata cv.

### Street Tree Strategies

- Replace the Golden Ash on Main Street with Tulip Trees to define the main street. A mix of in-road planting and planting in verges will be required to improve tree spacing and consistency.
- Progressively replace the failing Liquidambar trees that form part of the 'Golden Mile' with Tulip Trees to reinforce the original concept, define the entry and create a strong sense of arrival into Mittagong.
- Define the extent of Mittagong Urban Centre through consistent planting of Green Vase Zelkova. This should include Fitzroy Street, Albion Street, Station Street, Princes Street, Bessemer Street, Pioneer Street, Victoria Street, Alice Street, Helena Street, and Louisa Street.
- Create a strong visual connection between Lake Alexandria Park, Mittagong Library and Main Street by establishing a consistent avenue of medium size deciduous trees.
- Retain and supplement large tree planting along Railway Corridor including the southern verge of Regent Street and the northern verge of Railway Parade.
- Distinguish the suburbs of Mittagong as distinct from the bushland setting through the planting of a mix of exotic and native trees.
- Take advantage of the wide grassed verges by planting medium and large size trees.

### STRATEGIC PLANTING

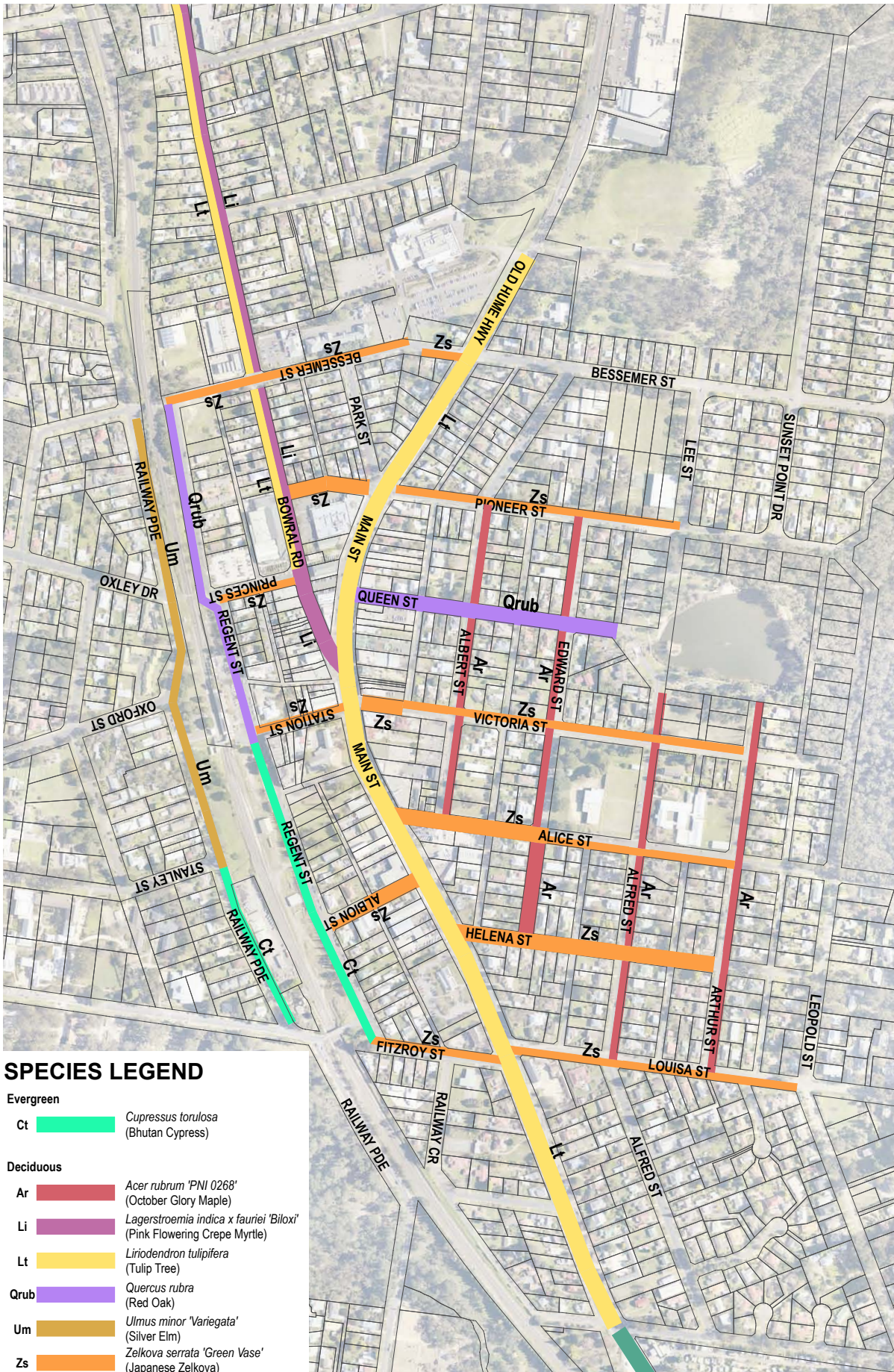
Location	Botanical Name	Common Name
Main Street and Old Hume Highway	Liriodendron tulipifera	Tulip Tree
Define Urban Centre	Zelkova serrata 'Green Vase'	Green Vase Zelkova
Define Queen Street	Quercus rubra	Red Oak
Define the eastern entry along Bowral Road	Liriodendron tulipifera	Tulip Tree
	Lagerstroemia indica x fauriei 'Biloxi'	Pink Flowering Crepe Myrtle
Arthur, Alfred, Edward and Albert Streets	Acer rubrum 'PNI 0268'	October Glory Maple
Define Railway Corridor	Cupressus torulosa	Bhutan Cypress
	Quercus rubra	Red Oak
	Ulmus minor 'Variegata'	Silver Elm

### STREETS NOT SHOWN FOR STRATEGIC PLANTING

Verges with restricted Planting Space (<1.5m)		
Location	Botanical Name	Common Name
Under Power Lines	Callistemon viminalis	Weeping Bottlebrush
	Camellia sasanqua	Camellia
	Gordonia axillaris	Fried Egg Plant
	Lagerstroemia fauriei 'Fantasy'	White Flowering Crepe Myrtle

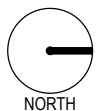


# Mittagong



NOTE: refer to Proposed Tree Species schedule for streets not shown for strategic planting.

0 100 200 500 m





Not Under Power Lines	Melaleuca styphelioides	Prickly Paperbark
	Nyssa sylvatica	Sour Gum
	Pyrus calleryana 'Chanticleer'	Callery Pear
	Tristanopsis laurina	Water Gum

### STREETS NOT SHOWN FOR STRATEGIC PLANTING

#### Verges with unrestricted Planting Space (>1.5m)

Location	Botanical Name	Common Name
Under Power Lines	Callistemon viminalis	Weeping Bottlebrush
	Camellia sasanqua	Camellia
	Gordonia axillaris	Fried Egg Plant
	Lagerstroemia fauriei 'Fantasy'	White Flowering Crepe Myrtle
	Tristanopsis laurina	Water Gum
Not Under Power Lines	Acer platanoides	Norway Maple
	Acer rubrum 'PNI 0268'	October Glory Maple
	Brachychiton populneus	Kurrajong
	Cedrus deodara	Himalayan Cedar
	Celtis australis	Nettle Tree
	Cupressus macrocarpa	Monterey Cypress
	Eucalyptus cinerea	Argyle Apple
	Nyssa sylvatica	Sour Gum
	Populus simonii	Chinese Poplar
	Quercus acutissima	Sawtooth Oak
	Tilia cordata	Greenspire™ Linden
	Ulmus parvifolia 'Todd'	Chinese Elm
	Waterhousea floribunda 'Green Avenue'	Green Avenue Lilly Pilly



Figure 5.12 - Existing street tree planting of Liquidambar on Bowral Road, Mittagong (Photo - Arterra)



Figure 5.11 - Existing street tree planting of Golden Ash on Main Street, Mittagong. (Photo - Arterra)

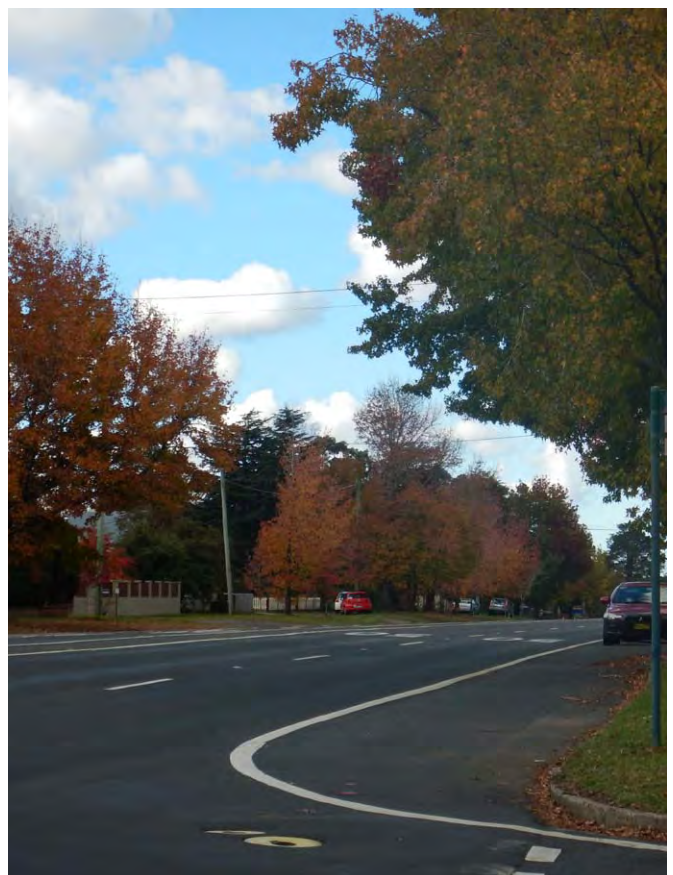


Figure 5.13 - Existing street tree planting of Liquidambar on Main Street, Mittagong - the 'Golden Mile' (Photo - Arterra)





Figure 5.14 - *Liriodendron tulipifera* in Bowral. (Photo - Arterra)



Figure 5.16 - *Zelkova serrata* in East Bowral (Photo - Arterra)



Figure 5.15 - *Lagerstroemia indica x fauriei* 'Biloxi' (Photo - Arterra)



Figure 5.17 - *Quercus rubra* (Sourced from <http://www.elitemulch.com/products/shadetrees.htm> on 31/08/2015)



### 5.2.3 North Mittagong (Aylmerton, Braemar, Willow Vale, Balaclava, Renwick)

#### Existing Streetscape Character

The northern suburbs of Mittagong have only recently been developed and as such most of the existing street tree population is young and has not had time to establish. Numerous streets still only exist on plan and are yet to be constructed. Avenues of single or mixed species trees can be established in many of the new streets as they have the potential to grow and develop without the constraints of above ground powerlines.

#### Physical Influences

Soils in the Mittagong area are derived mainly from Wianamatta Group Shale geology and are likely to be shallow to moderately deep loams or clays. Soils on crests and upper slopes will typically be shallower and well drained while lower slopes will be deeper and with poor drainage. The western half of Willow Vale is located on Hawkesbury Sandstone geology and is likely to have shallow sandy soils of low fertility.

Overhead power lines are a significant constraint to street tree planting for most of Mittagong. 85% of streets have a significant conflict between power lines and street trees, which has a significant impact on the character of the area. Verge widths and treatments vary greatly across the urban area. Verge widths of between 3.5 to 5m are present on nearly 50% of all streets in Mittagong with a further 33% with large verges of greater than 5m.

#### Existing Dominant Tree Species

- Fraxinus excelsior 'Aurea'
- Eucalyptus radiata
- Lagerstroemia indica
- Callistemon sp.
- Liquidambar styraciflua
- Prunus x blireana
- Prunus serrulata cv.

#### Street Tree Strategies

- Retain and supplement large deciduous tree planting along Old Hume Highway.
- Distinguish the suburbs of North Mittagong as distinct from the bushland setting through the planting of a mix of exotic and native trees.
- Take advantage of the wide grassed verges by planting medium and large size trees.

#### Proposed Tree Species

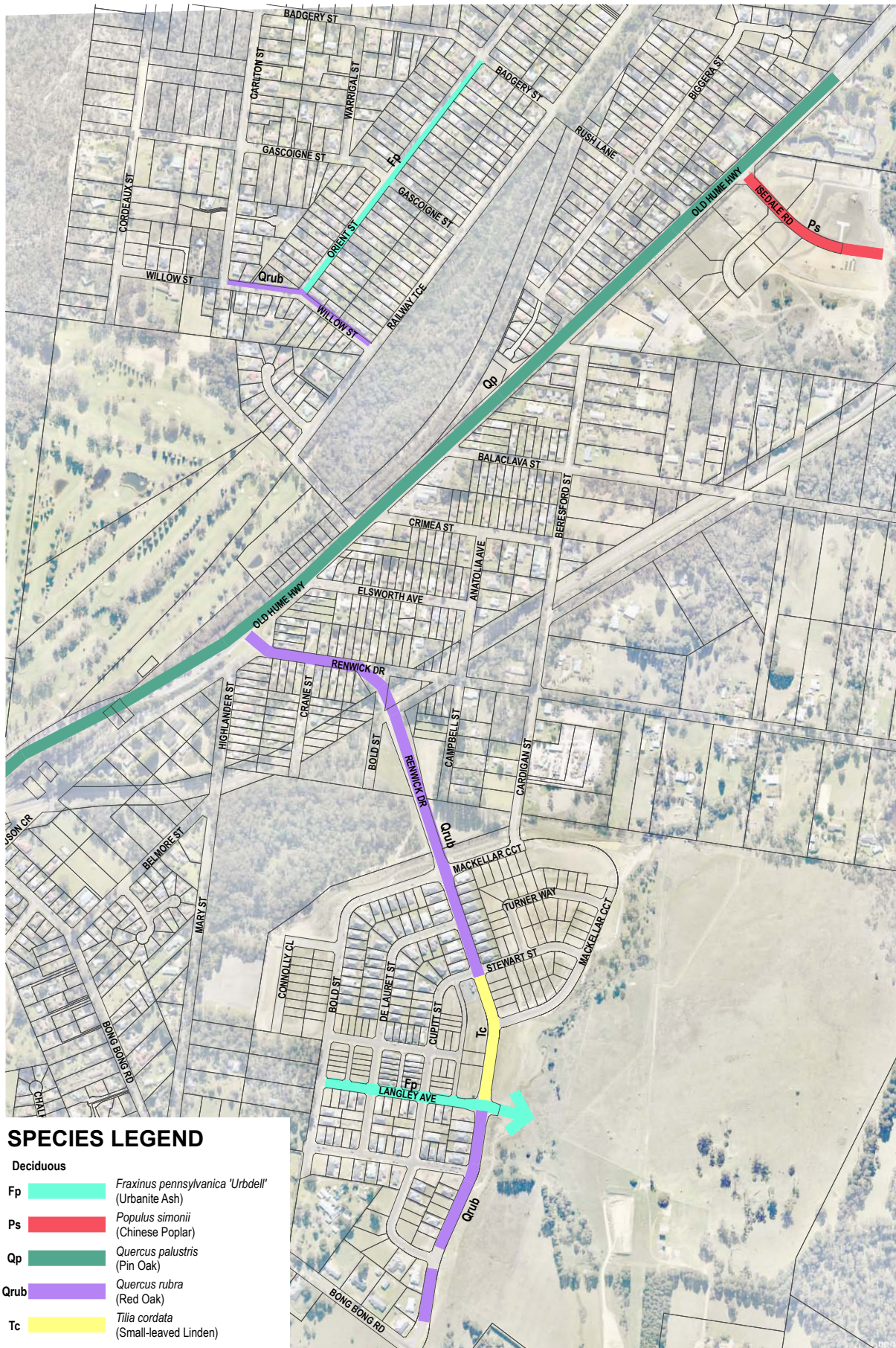
STRATEGIC PLANTING		
Location	Botanical Name	Common Name
Old Hume Highway	Quercus palustris	Pin Oak
Main Street	Tilia cordata	Small-leaved Linden
Define Entry Road	Quercus rubra	Red Oak
Langley Avenue	Fraxinus pennsylvanica 'Urdbell'	Urbanite Ash
Isedale Road	Populus simonii	Chinese Poplar
Willow Street	Quercus rubra	Red Oak
Orient Street	Fraxinus pennsylvanica 'Urdbell'	Urbanite Ash

STREETS NOT SHOWN FOR STRATEGIC PLANTING		
Verges with restricted Planting Space (<1.5m)		
Location	Botanical Name	Common Name
Under Power Lines	Callistemon viminalis	Weeping Bottlebrush
	Lagerstroemia fauriei 'Fantasy'	Whire Flowering Crepe Myrtle
Not Under Power Lines	Melaleuca styphelioides	Prickly Paperbark
	Nyssa sylvatica	Sour Gum
	Pyrus calleryana 'Chanticleer'	Callery Pear
	Tristanopsis laurina	Water Gum

STREETS NOT SHOWN FOR STRATEGIC PLANTING		
Verges with unrestricted Planting Space (>1.5m)		
Location	Botanical Name	Common Name
Under Power Lines	Callistemon viminalis	Weeping Bottlebrush
	Lagerstroemia fauriei 'Fantasy'	Whire Flowering Crepe Myrtle
	Tristanopsis laurina	Water Gum
Not Under Power Lines	Acer platanoides	Norway Maple
	Brachychiton populneus	Kurrajong
	Celtis australis	Nettle Tree
	Eucalyptus cinerea	Argyle Apple
	Lophostemon confertus	Brush Box
	Melaleuca linariifolia	Narrow-leaved Paperbark
	Melia azedarach 'Caroline'	White Cedar
	Nyssa sylvatica	Sour Gum
	Taxodium distichum	Swamp Cypress
	Ulmus parvifolia 'Todd'	Chinese Elm
	Waterhousea floribunda 'Green Avenue'	Green Avenue Lilly Pilly



# Mittagong North (Braemar/ Willow Vale/ Renwick)



NOTE: refer to Proposed Tree Species schedule for streets not shown for strategic planting.

0 100 200 500 m

