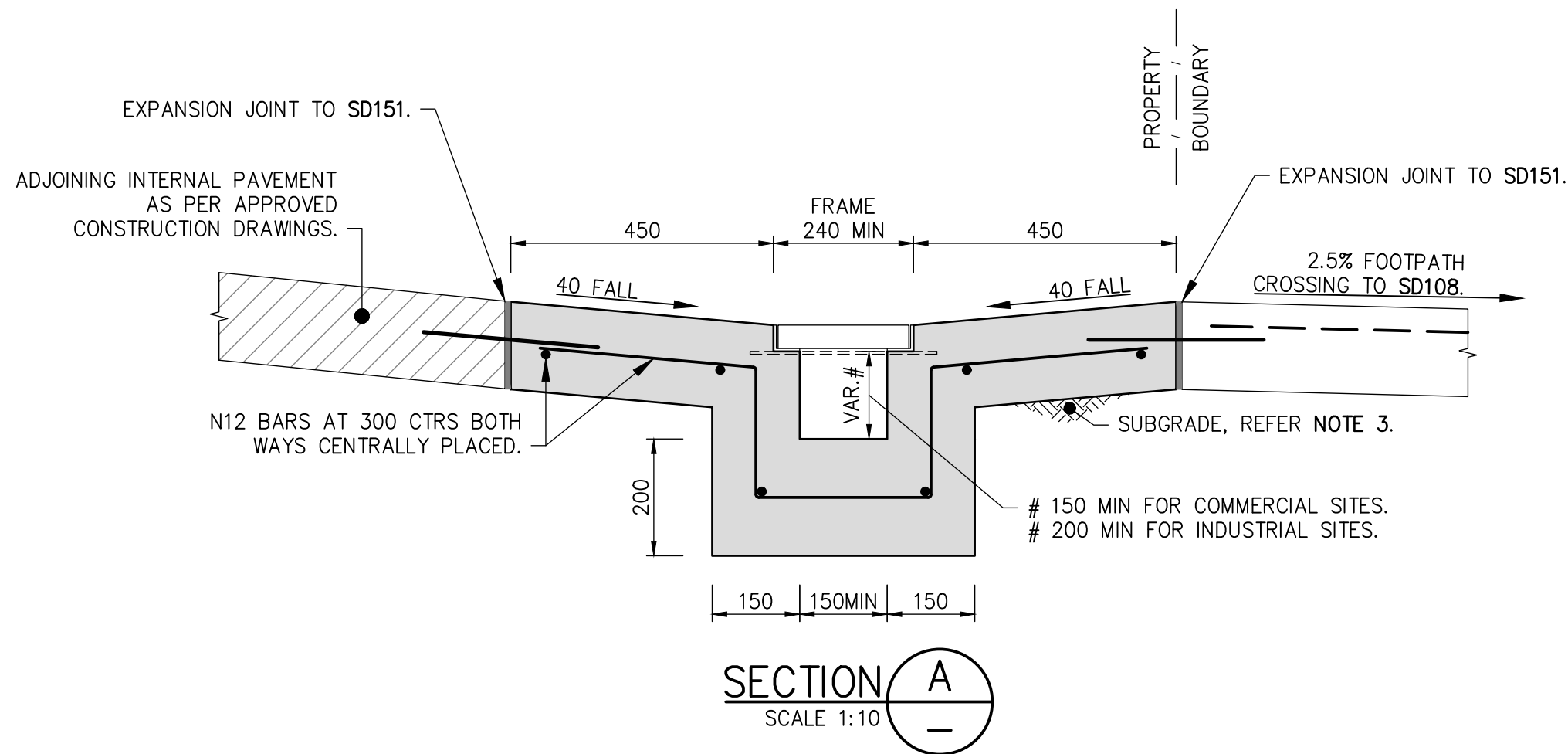


NOTES:

1. ALL DIMENSIONS ARE IN MILLIMETRES UNLESS OTHERWISE SHOWN.
2. INSTALL 'WELDLOK TGF015B3-C' FOR COMMERCIAL, 'TG015D3-C' FOR INDUSTRIAL OR SIMILAR, HOT DIPPED GALVANISED GRATE WITH FRAME. GRADE BASE OF TRENCH AT A MINIMUM OF 1% FALL TO OUTLET.
3. SUBGRADE TO BE COMPACTED TO 95% STANDARD PRIOR TO THE PLACING OF CONCRETE.
4. COMPRESSIVE STRENGTH OF CONCRETE SHALL BE A MINIMUM $F'_c = 25MP_a$ AT 28 DAYS.
5. CONCRETE SHALL HAVE A BROOM FINISH. ALL EDGES, AND EDGES ABUTTING EXISTING STRUCTURES SHALL BE FINISHED WITH AN APPROVED EDGING TOOL.
6. FORTY EIGHT (48) HOURS NOTICE IS TO BE GIVEN PRIOR TO THE PLACING OF CONCRETE TO ALLOW FOR INSPECTION BY COUNCIL' OFFICER.



A	REVISED ISSUE	TZ	25/01/21
ISSUE	AMENDMENTS	DRAWN	DATE



DRAWNTZ..
 SCALE AS SHOWN
 SHEET SIZE: **A3**

APPROVED

 GROUP MANAGER
 INFRASTRUCTURE SERVICES
 D.L.

WINGECARRIBEE SHIRE COUNCIL			
STANDARD DRAWING TRENCH GRATE			
DATE: 25/01/2021	PLAN No: SD117	SHEET 1 OF 1	ISSUE A