

WINGECARRIBEE SHIRE COUNCIL

***COMMUNITY AND
RECREATIONAL FACILITIES
STRATEGY – POST EXHIBITION***

Presentation to Council 18 October – Post Exhibition

Summary of key changes post exhibition

1. Scope of the Strategy and process to implement
2. Clarify the limits of the strategy
3. Clarity with regards to Strategic Priorities within the strategy
4. Spotlight key partners in the delivery of the strategy
5. Planning for Facilities
6. New next steps
7. The role, function and importance of smaller hubs
8. Inclusion of action for Lackey Park Masterplan (Precinct Action)

Scope of the CRFS

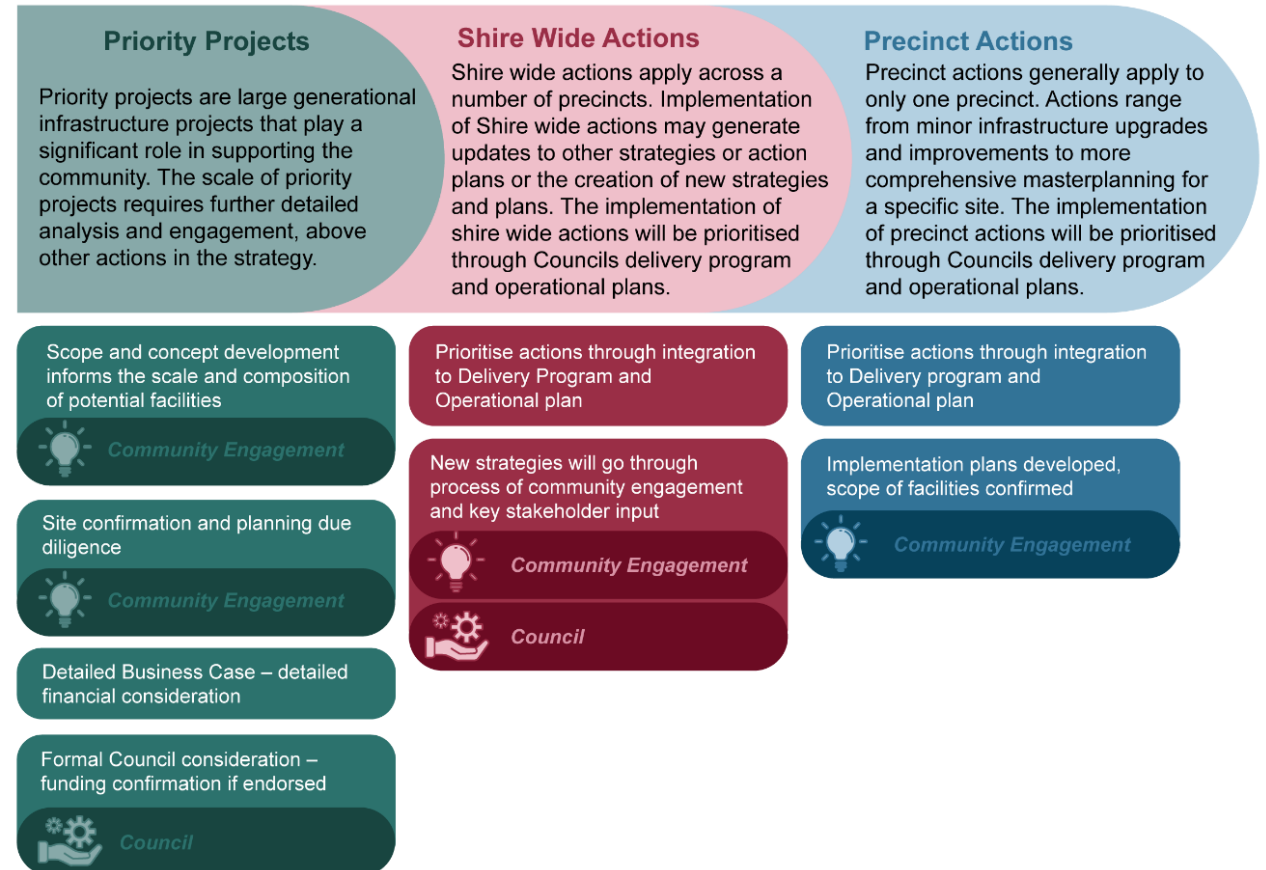
- Scope of the Strategy - highlighting Long Term Strategic nature to inform future detailed planning, analysis and engagement.
- New graphic identifying the relationship with other Strategies and Plans of Council.
- Clarification on the limitations of the Strategy



How will the Actions be Implemented?

New graphic highlighting:

- Three levels of actions – and what they are.
- Steps to implement
- Opportunities for engagement for each action level
- Clarification on funding pathways and opportunities to fund.



Strategic Priorities - Aquatics

Strategic Direction:

- Recommended new facility be built in Mittagong Precinct (year-round facility)
- Decommission current Mittagong Pool and include site in a wider Mittagong Oval master planning process
- Undertake detailed Cost Benefit Analysis, including review of operational models for Bundanoon and Bowral Swimming Centre

Multipurpose Indoor Facility

Strategic Direction:

- Provide a multi-purpose indoor facility in the Mittagong Precinct to ensure access within the 15min driving catchment for residents towards the north of the Shire.
- Investigation be undertaken to identify a site that supports an integrated multi-purpose hub delivery model, which will maximise efficiencies, and provide improved community outcomes.

Spotlight key partners in the delivery of the strategy



SPOTLIGHT ON The Southern Highland Botanic Gardens

The Southern Highland Botanic Gardens (SHBG) is a 14hectare site located at 1 Old South Road, Bowral. The Gardens have become a key community hub within Bowral and the wider Southern Highlands, providing opportunities for passive recreation, community gatherings and events. The SHBG also play a key role in the Southern Highlands visitor economy with 44,000 visitors recorded within the last 12month period.

Operated by the Southern Highland Botanic Gardens Ltd, a volunteer led not-for-profit organisation, the SHBG was established with an aim to educate the general public about horticulture and landscaping, plants and biological communities, and raise community

Our Partners



SPOTLIGHT ON OUR PARTNERSHIPS

Robertson Community Technology Centre (CTC)

Strong partnerships are one of the foundational principles of the CRFS. With a large number of towns and villages across the Shire, it's important that Council work closely with private and not-for-profit facilities and operators to provide support for the community.

The CTC is a not-for-profit community organisation that builds strong connections across the community. Operated by the CTC Robertson Management committee, the facility is an

Planning for Facilities

Further clarity provided on the range of factors that need to be considered in the provision of facilities:

- Population demand
- Sport, recreation and cultural participation
- Access and travel distances
- Need for local, district and regional facilities
- Demographics & potential changes.

Next Steps – Implementing the Strategy

Inserted new section:

- **Clarity on the timeframe for the delivery of the Strategic Directions – Priority Projects**
- **Confirmation that Shire Wide and Precinct Actions will be considered and implemented through Councils Delivery Programs and Operational Plans**

Other key changes

Strengthen clarity re - need for facilities in villages and small communities that support the community across a range of uses are flexible and adaptable

Include Precinct Action – Moss Vale Precinct

“Review the current Lackey Park Masterplan to ensure consistency with planning principles, and opportunities to maximise usage through multi-purpose facilities”

ASTROLABE
GROUP

