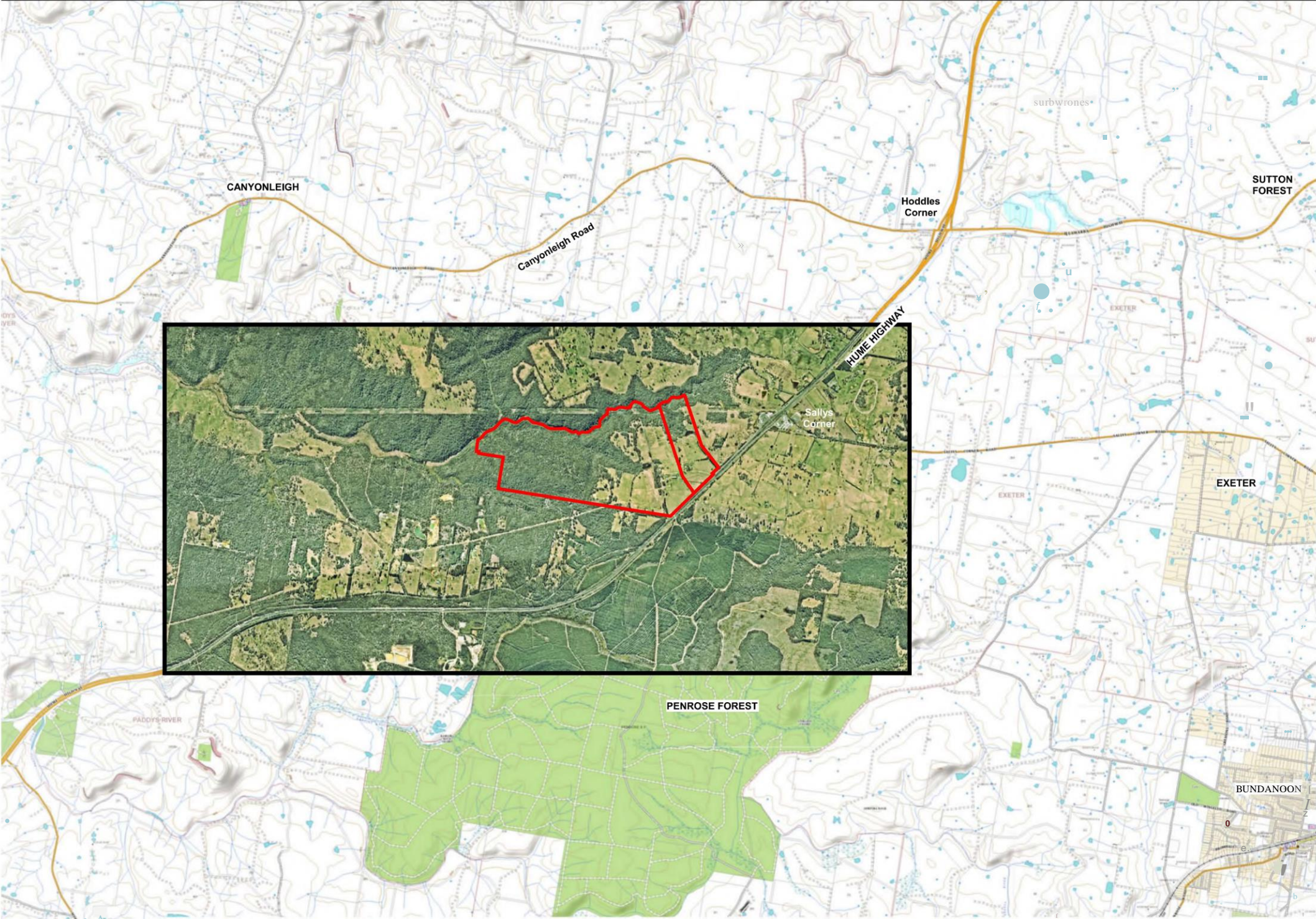
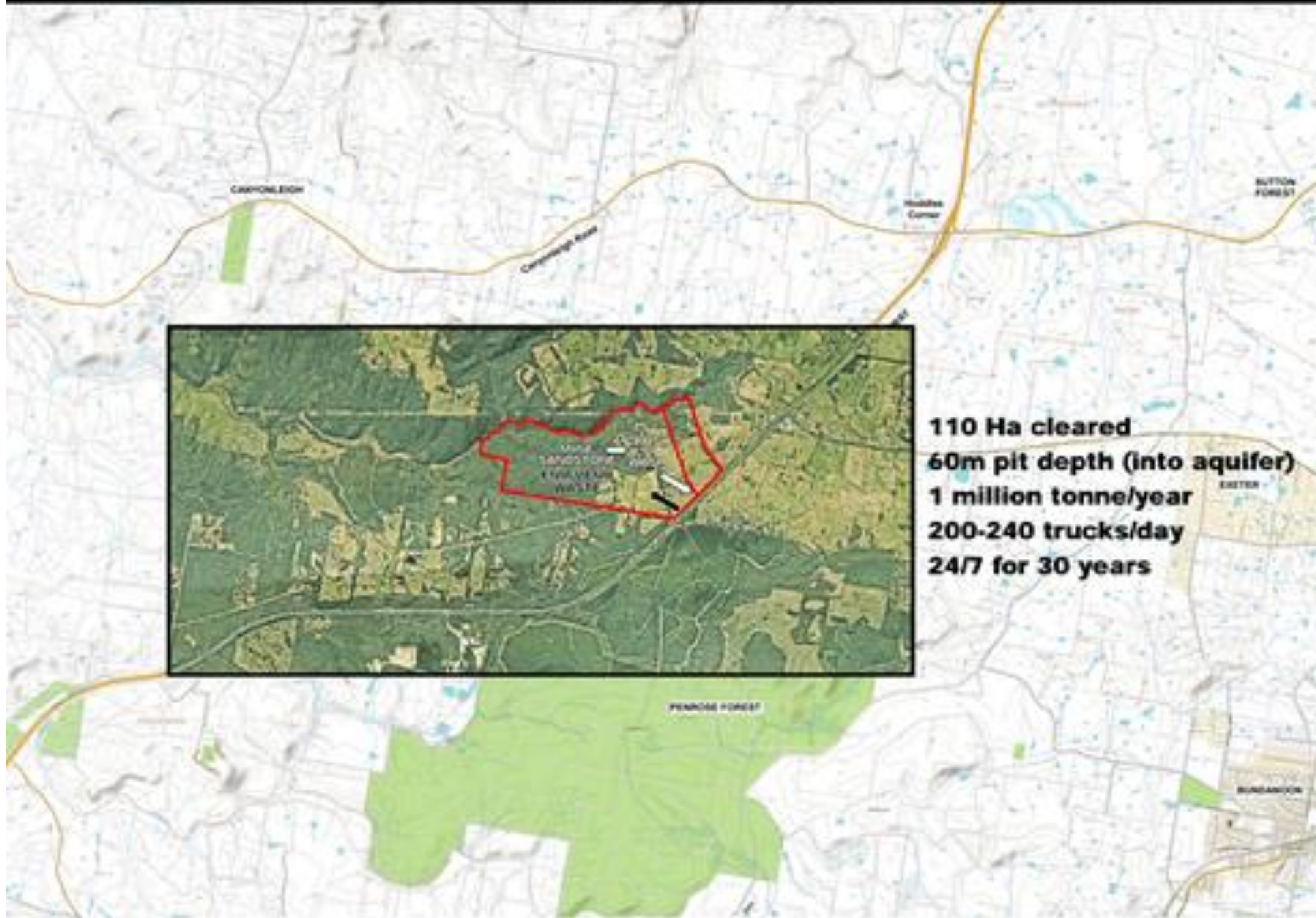


MINE SITE

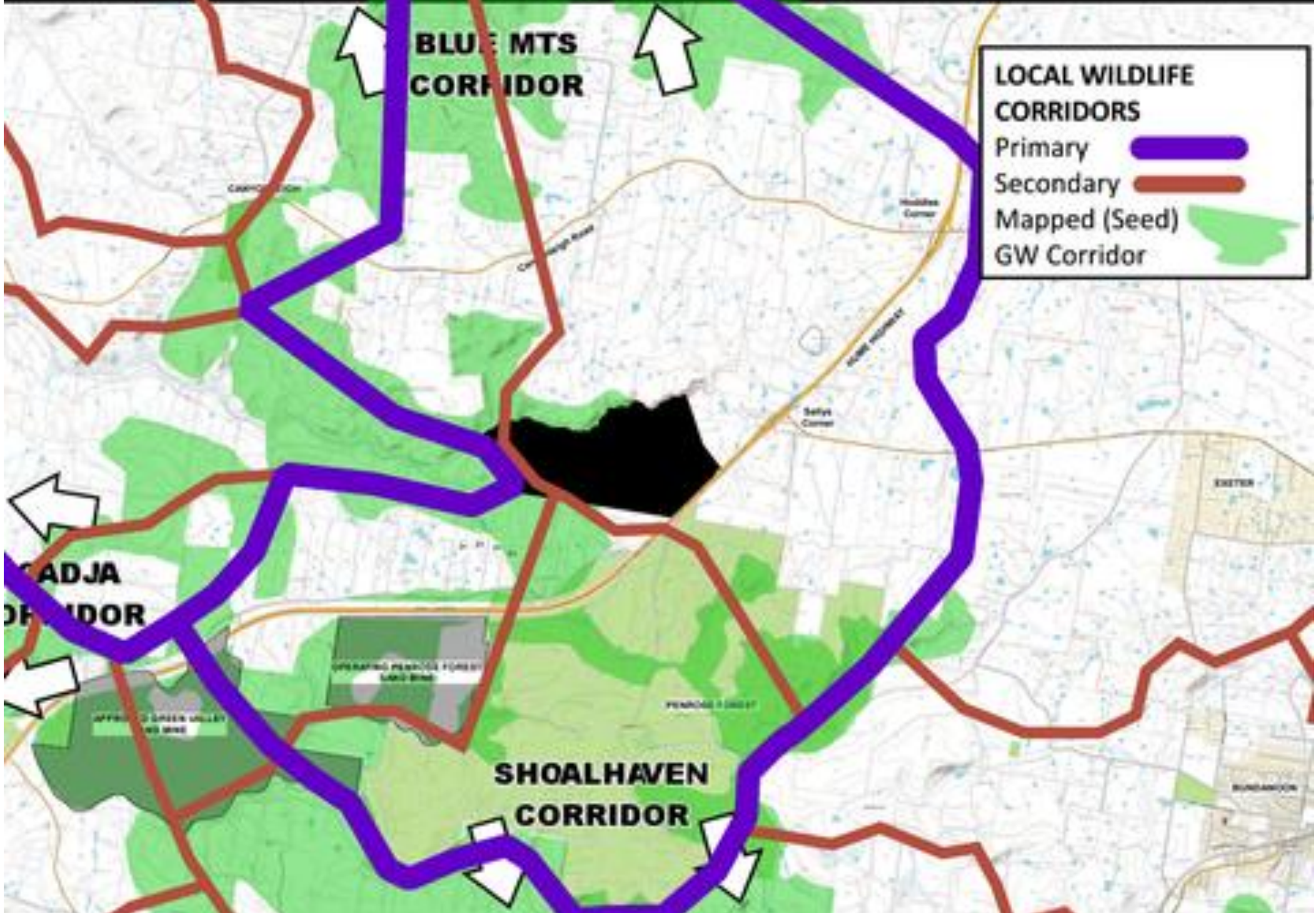


MINE PLAN



110 Ha cleared
60m pit depth (into aquifer)
1 million tonne/year
200-240 trucks/day
24/7 for 30 years

WILDLIFE CORRIDOR



**BLUE MTS
CORRIDOR**

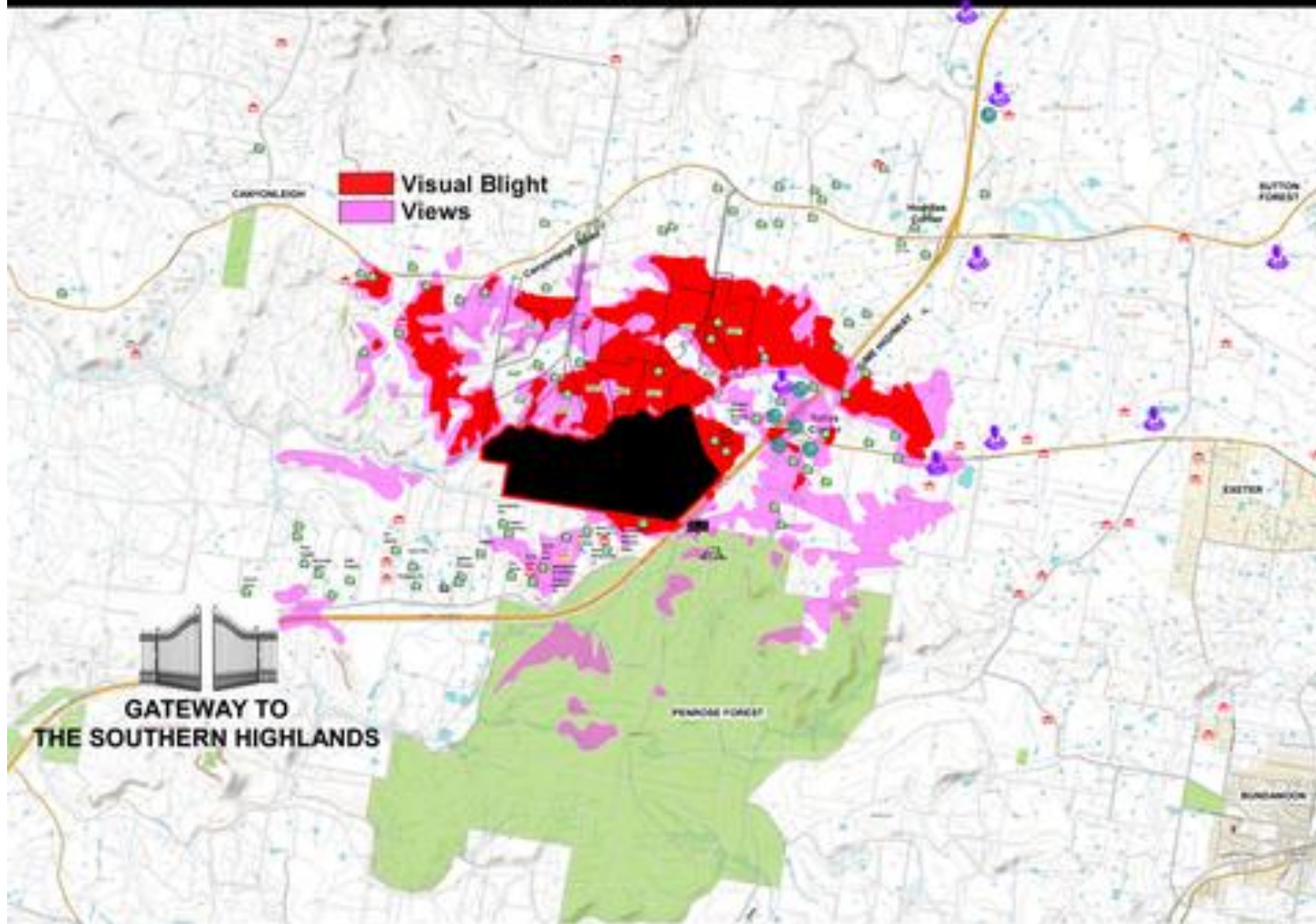
**LOCAL WILDLIFE
CORRIDORS**

- Primary 
- Secondary 
- Mapped (Seed) 
- GW Corridor 

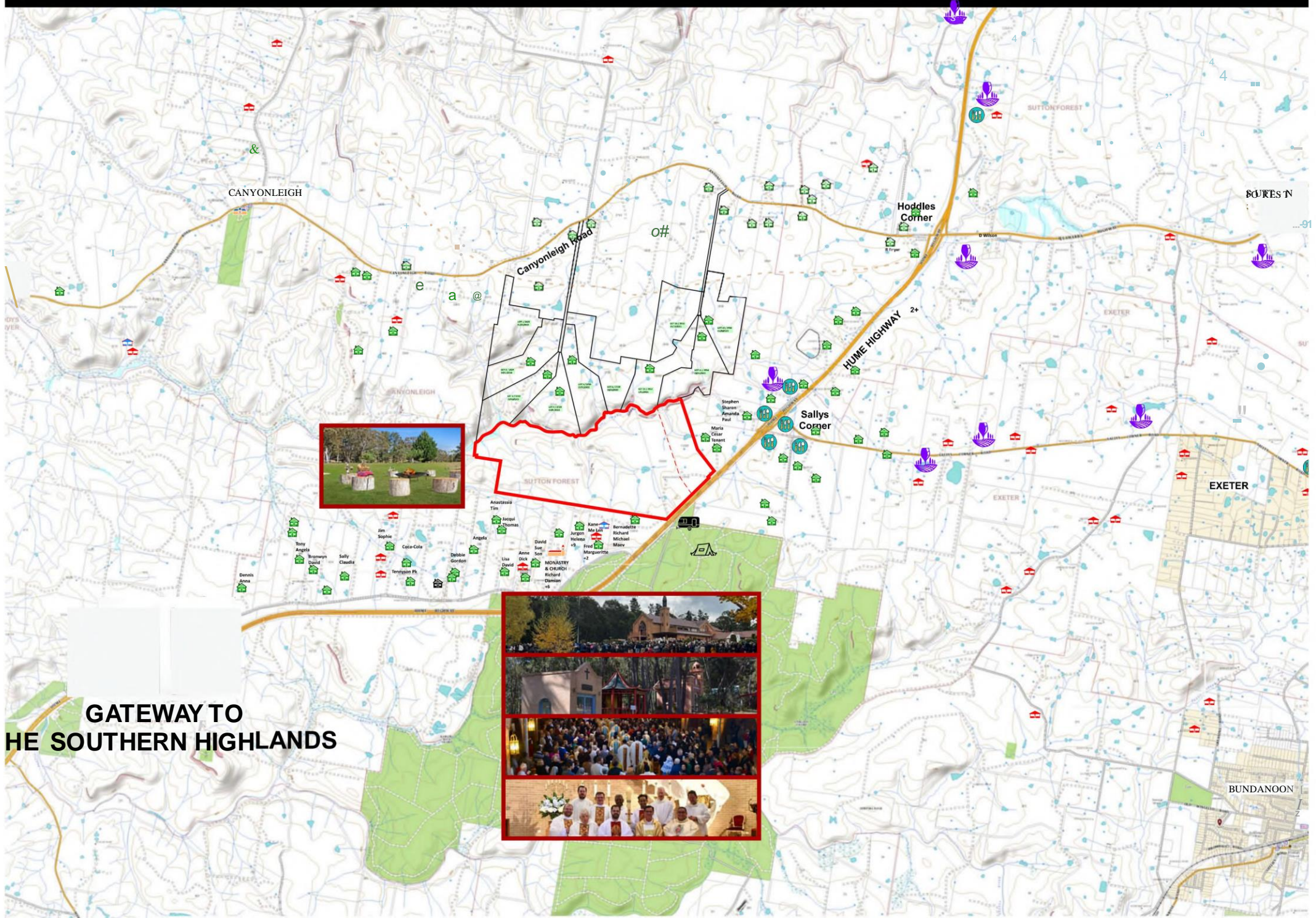
**KADJA
CORRIDOR**

**SHOALHAVEN
CORRIDOR**

LANDSCAPE



COMMUNITY



GATEWAY TO THE SOUTHERN HIGHLANDS

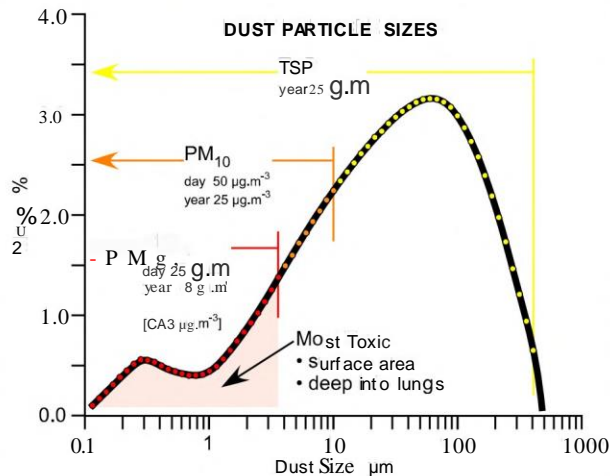


This isn't just "dust" - this is active 95% silica.

Crushing silica exposes a new chemically-active oxidative surface. In the body, it is -25 times more toxic than "dust."



Old sand is no longer chemically active.



Negotiated regulatory standards. NO MEDICAL VALIDITY

THERE IS NO SAFE LEVEL FOR THIS TOXIN

Active crystalline silica causes, contributes to, exacerbates, and makes harder to treat:

Airways diseases

- bronchitis
- sinusitis
- asthma
- COPD

Lung diseases

- pneumonia
- emphysema
- pulmonary fibrosis
- lung carcinoma
- tuberculosis
- pulmonary silicosis*

Heart disease

- ischemic heart disease
- heart attacks
- cardiac arrhythmia
- cardiac arrest

Autoimmune diseases

- acute allergies
- systemic lupus
- rheumatoid arthritis
- systemic sclerosis
- vasculitis
- sarcoidosis

Gastrointestinal disease

- ulcerative colitis
- Crohn's disease
- gastric cancer

Kidney disease

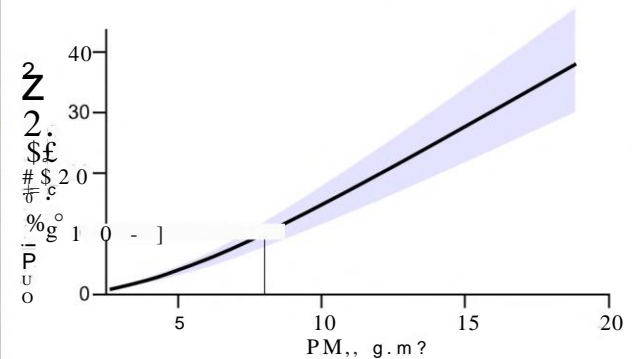
- glomerulonephritis
- renal failure

Mental health

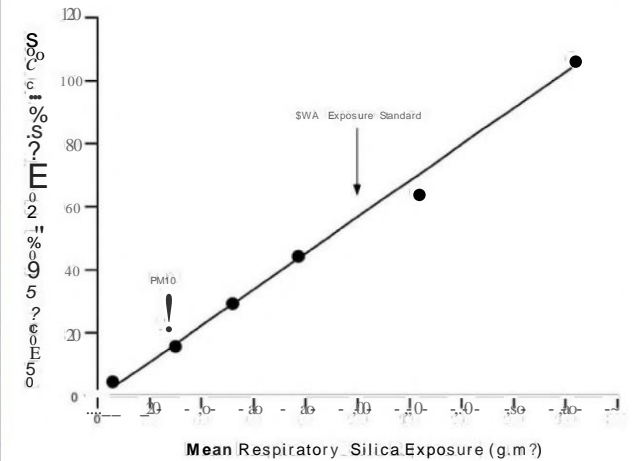
- anxiety
- depression

Chromosomal changes

Long term exposure to 10 µg.m⁻³ increases cardiorespiratory mortality by 23% (17-29%) and all-cause mortality by 12% (8-15%).



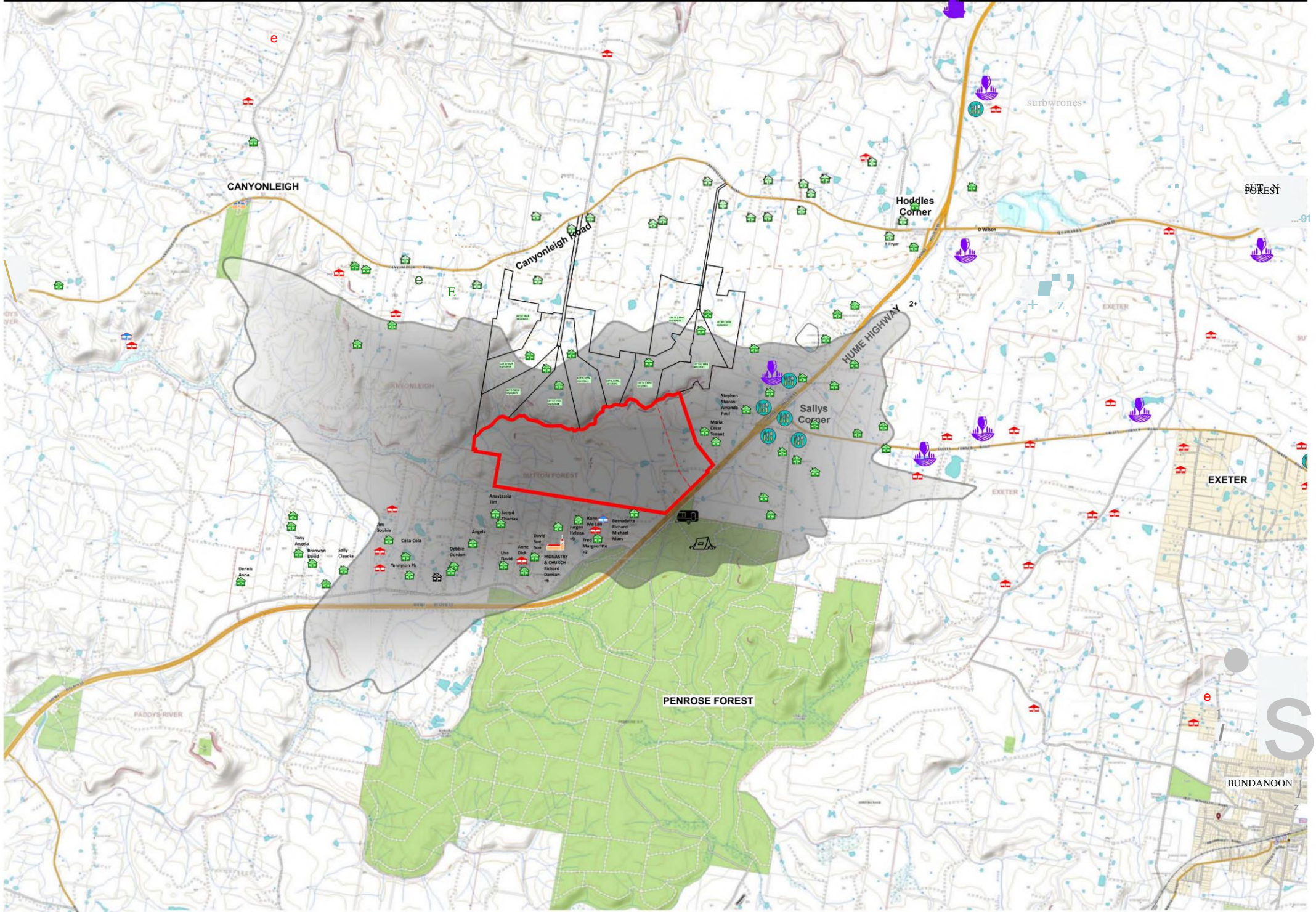
EVEN AT CONCENTRATIONS BELOW REGULATORY LEVELS, each 1 g .m⁻³ increase in annual PM2.5 increases mortality. Yazdi et al. (2021) *The Lancet* 5:10, 689.



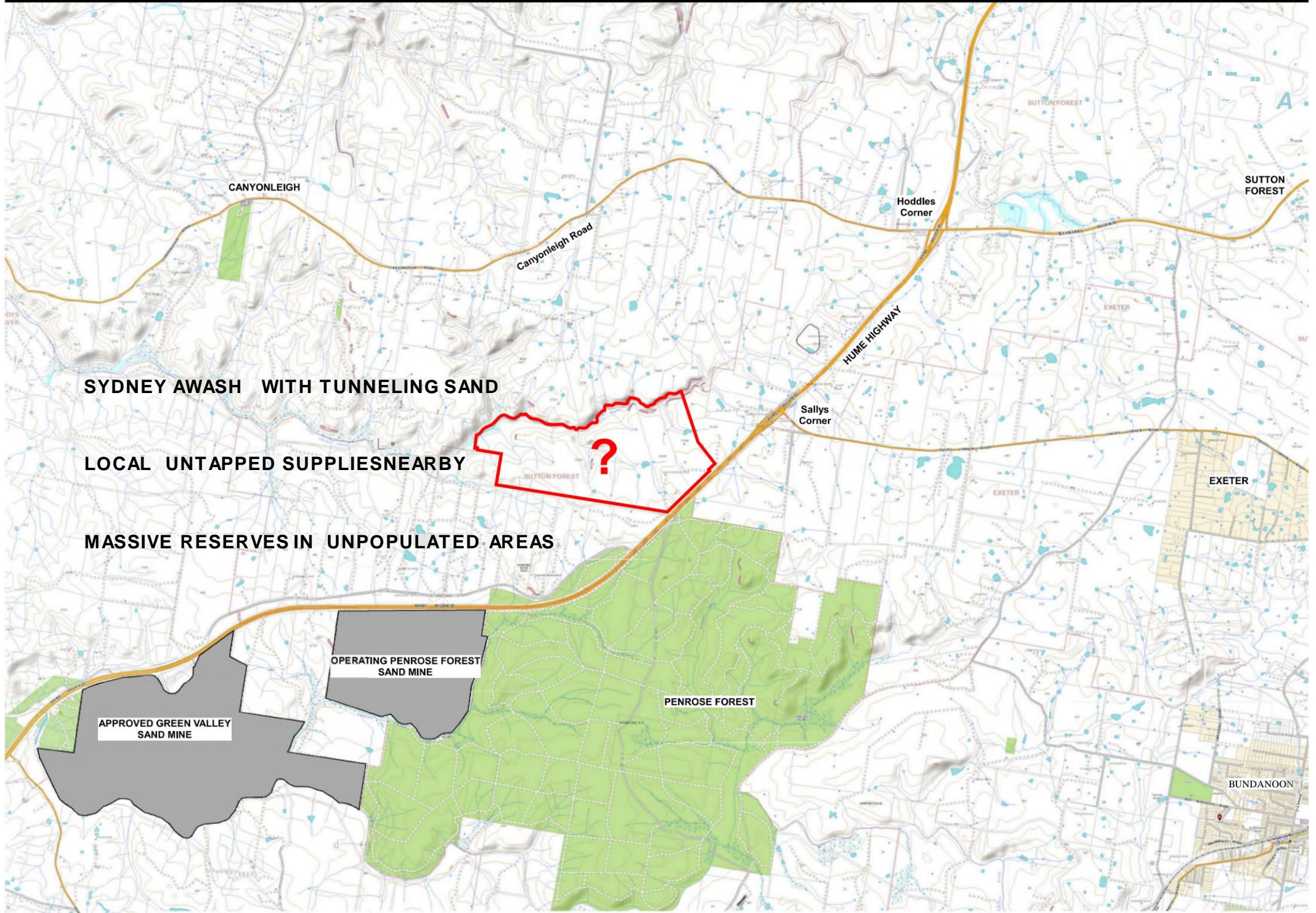
THERE IS NO SAFE LEVEL FOR ACTIVE CRYSTALLINE SILICA

DUST

%.



NEED FOR SAND - WHY HERE?



SYDNEY AWASH WITH TUNNELING SAND

LOCAL UNTAPPED SUPPLIES NEARBY

MASSIVE RESERVES IN UNPOPULATED AREAS

OPERATING PENROSE FOREST SAND MINE

APPROVED GREEN VALLEY SAND MINE

PENROSE FOREST

BUNDANOON

PLEASE STRONGLY OPPOSE THIS MINE

- 
- X TOURISM**
 - X LANDSCAPE**
 - X COMMUNITY**
 - X ECOSYSTEM**
 - X LOCAL JOBS**
 - X BIODIVERSITY**
 - X AIR POLLUTION**
 - X PUBLIC HEALTH**
 - X NEED FOR SAND**
 - X TRAFFIC SAFETY**
 - X WATER POLLUTION**
 - X NOISE & LIGHT POLLUTION**
 - X DAMAGE LOCAL ENTERPRISES**
 - X DAMAGE GROUNDWATER SUPPLY**
 - X POLLUTING SYDNEY WATER CATCHMENT**
 - X DAMAGE INDIGENOUS HERITAGE ROCK ART CAVE**