

**From:** Susie E [REDACTED]  
**Sent:** Wednesday, December 13, 2023 2:04 PM  
**To:** Administrator Office <[AdministratorOffice@wsc.nsw.gov.au](mailto:AdministratorOffice@wsc.nsw.gov.au)>  
**Subject:** Council Meeting Notes for Tabling 13.12.2023 Agenda Item 8.1

Dear Michelle,

Please find notes below for tabling at the meeting this afternoon and for Lisa's consideration. Also, please find a [brief presentation linked here](#).

WHO AM I?

I care about the area -

Susan Maloney

A seventh-generation resident

Planner and PIA member

Community Engagement Officer

University Teacher – with expertise in Digital Transformation, Ethnography and Placemaking

GATEWAYS

Bowral's gateways and decision points and, more broadly the town plan, should not pinch the town in, making it smaller and more congested. It should be expansive and inclusive.

It is important that as the town grows, mobility is not restricted and better supported. The Station Street bypass can accommodate all forms of active transport, e-mobility and alleviate pressure on Bong Bong Street and where there are fewer driveways and shop entrances.

## BI-DIRECTIONAL BIKEPATH/E-MOBILITY AND LINKAGES TO GREATER BOWRAL

A bikepath and transport on Bong Bong Street will be dangerous and hazardous for all. It is poor design to put cyclists on the limited footpath space and on the inside of parked vehicles.

The models used are Sydney-based and not town-centred and do not have heritage character to retain.

We have an opportunity here to connect to Mittagong and Burradoo seamlessly.

An East-West spine on Wingecarribee Street can link across the town centre to Corbett Gardens, the Library, and the emerging cultural precinct of Bendooley Street, the schools and train station.

## TREEPLANTING AND PARKLET STAGING

Keep Wingecarribee Street and Banyette Street open and dual carriageway.

There are no amenities at Banyette Street and limiting movement on that street will increase congestion, limit parking and exceed the capacity of surrounding roads to cope with the extra volume. Emergency vehicles (ambulances and firetrucks) will have delayed times.

Can be more future focused. Instead of of Banyette Street pocket park, the Lions Park and development/urban renewal of the Bowral Street/Bong Bong Street corner is an opportunity to add public space.

Access to Essential Services and the Post Office will be very difficult with unjustified Wingecarribee Street closure.

The visual appeal of the heritage buildings along Bendooley Street instead could become more of a feature with the introduction of public space/roadside parklet and greenery.

The Coles carpark pedestrian spine needs a weather refuge to better-facilitate movement between High Street and Bendooley.

A bikehub/emobility hub at the Bowral Train Station is needed to better facilitate different modes of transport and to activate the Northern gateway.

Adding on to this, a common complaint is that our region does not provide enough opportunities for youth. The Loseby Park half court needs a complete upgrade. Beach volleyball courts at Bowral Pool would add value to the area and could easily be integrated into draft Master Plan for the Town Centre.

Provision could be made for laneway activation off Bundaroo Street with consideration given to activating the night time economy. Additional active spaces and street furniture improvement needed near Stafford Cottage and Bowral Library.

#### GARDEN CITY THEME AND GREEN STREETS

Council should not introduce costly Smart Bins that are not in line with the character of the street, nor are they needed. We don't need WIFI connected garbage collection to improve sustainability or reduce waste. It is an expense and a technology that WSC cannot justify. The maintenance of these systems is an ongoing expense and not a climate resilient choice.

A much more feasible and desirable option would be to introduce new and additional heritage style bins that fit with the Bong Bong Road streetscape when new street furniture, bulb outs and tree plantings are added.

The existing crossing can be raised. Bong Bong Street does not have an issue with speeding or pedestrian safety, no speed limits or further traffic calming required. It will increase carbon emissions as it will interrupt the smooth flow of traffic as it exists.

Overall consideration should be given to ageing in place as the Highlands has an ageing population and people with mobility issues. Often, public transport is unsuitable, therefore the capacity to easily drop off/pick up and access the town centre via vehicle is the preferred option.

Kind regards,

Susan Maloney

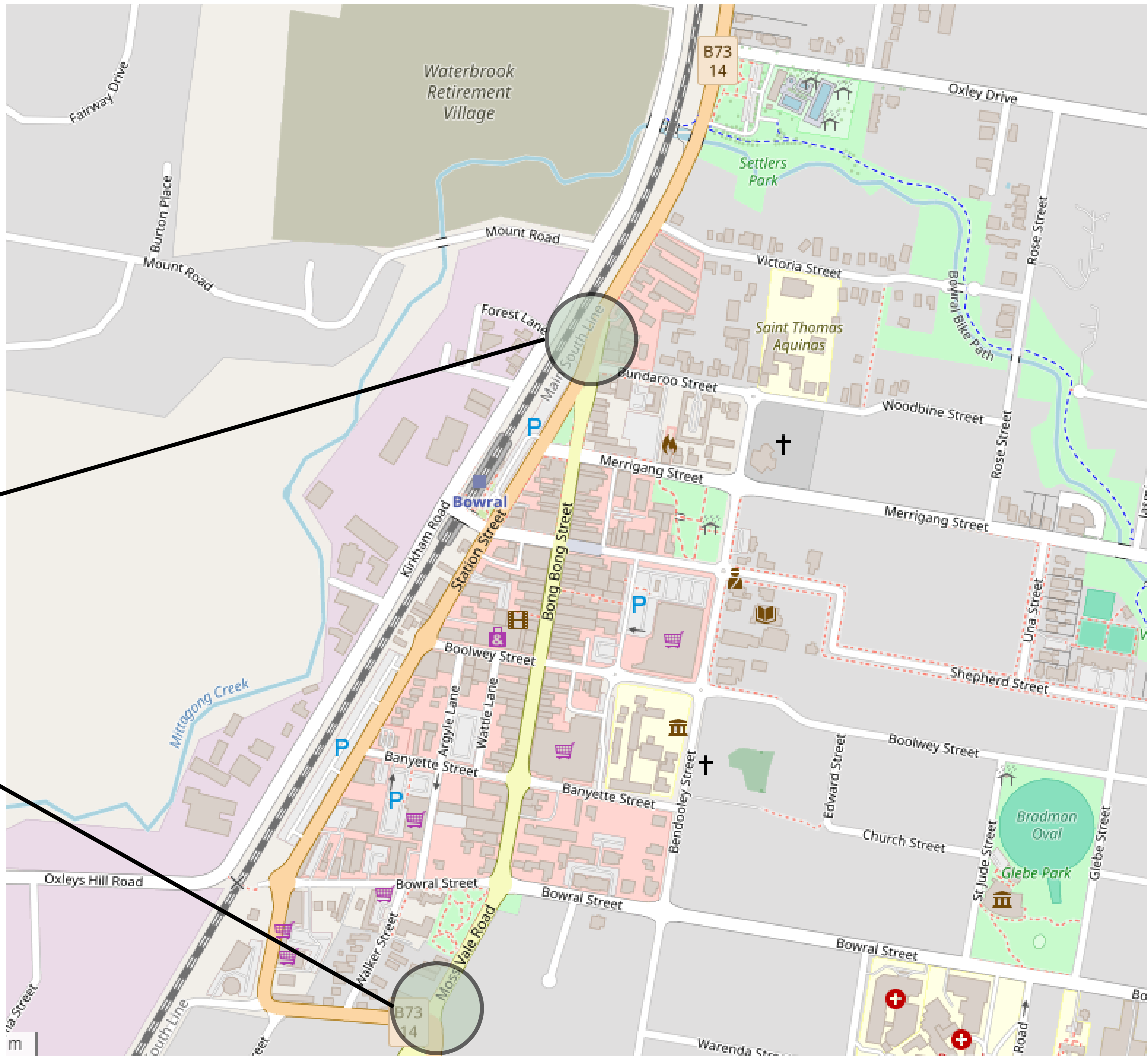
# Bowral Town Centre

Draft Master Plan

Who Am I?

Draft Improvements  
Prior to Consultation

GATEWAYS -  
DECISION POINTS  
(Southern at Kangaloon  
Road)



BIKEWAY/MICROMOBILITY LANE  
ALONG STATION STREET

EAST-WEST CONNECTIVE SPINE TRAIN  
STATION TO CORBETT GARDENS

CONTINUE ALONG RAILWAY PARADE  
TO BURRADOO STATION

BIKE HUB/E-MOBILITY AT BOWRAL  
STATION

KANGALOON ROAD TO BOTANIC  
GARDENS AND EXISTING NETWORK





TREE PLANTING  
ALONG  
WINGECARRIBEE ST  
INSTEAD OF CLOSURE

TREE PLANTING AND  
PARKLET STAGING AT  
BENDOOLEY ST (NO  
STAGING AT  
BANYETTE AND  
INSTEAD TREE  
PLANTING AND  
STREET FURNISHINGS  
AT THAT SITE)

TREE PLANTING AND  
BIOSWALES ALONG  
MERRIGANG STREET



# Garden City Model Not Smart City

Bins and Street Furnishings Should Match Bong Bong  
Street Heritage Character

Traffic Calming Measures Unnecessary (No speeding  
issues)

No capacity or need to change from Green Street to  
Complete Street

Improve Mobility on Station Street and Keep Bong  
Bong Street Fluid and Pedestrian-centric

Thank you