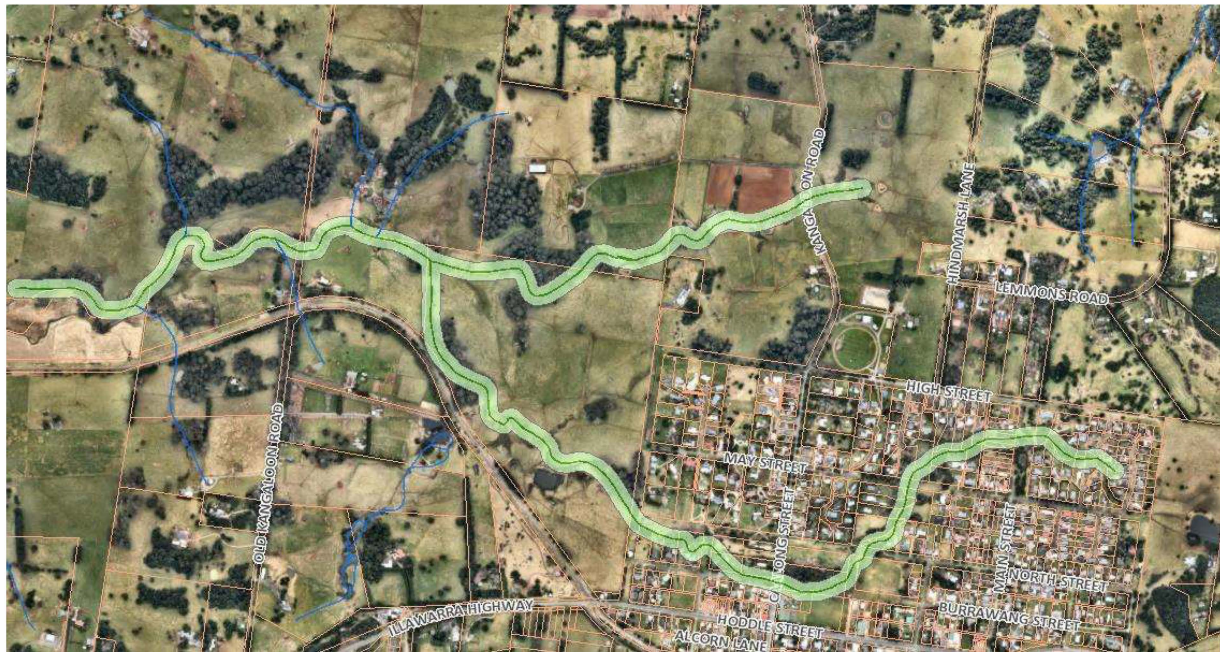


Map of Caalang Creek



Caalang Creek flows through the township of Robertson and runs into Wingecarribee Swamp. Natural reaches exist along parts of the creek and there are sections that have been modified. The surrounding catchment is mostly urban with some industrial and open fields. The creek supports some native Flora and Fauna. In addition, the creek has a number of recreation reserves.

Key risks to the river health include:

- Weed encroachment
- Sedimentation
- Bank erosion
- Urban stormwater
- Poor in stream habitat; and
- Lack of streamside vegetation

The Robertson Village Overland Flow Study was completed in 2016 and focused on the Caalang Creek catchment. It is designed to address existing and future flood issues along Huddle Street and the greater village itself [Robertson Village Overland Flow Study](#).

