

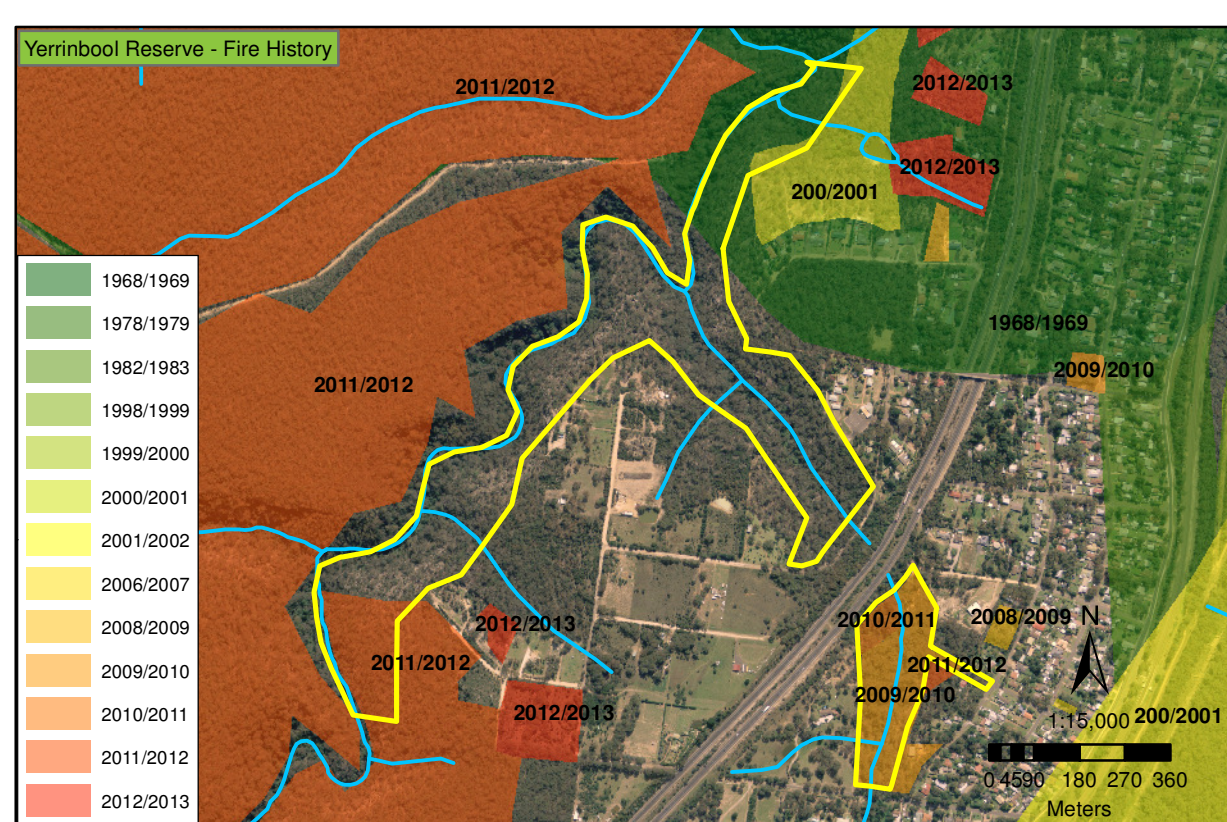
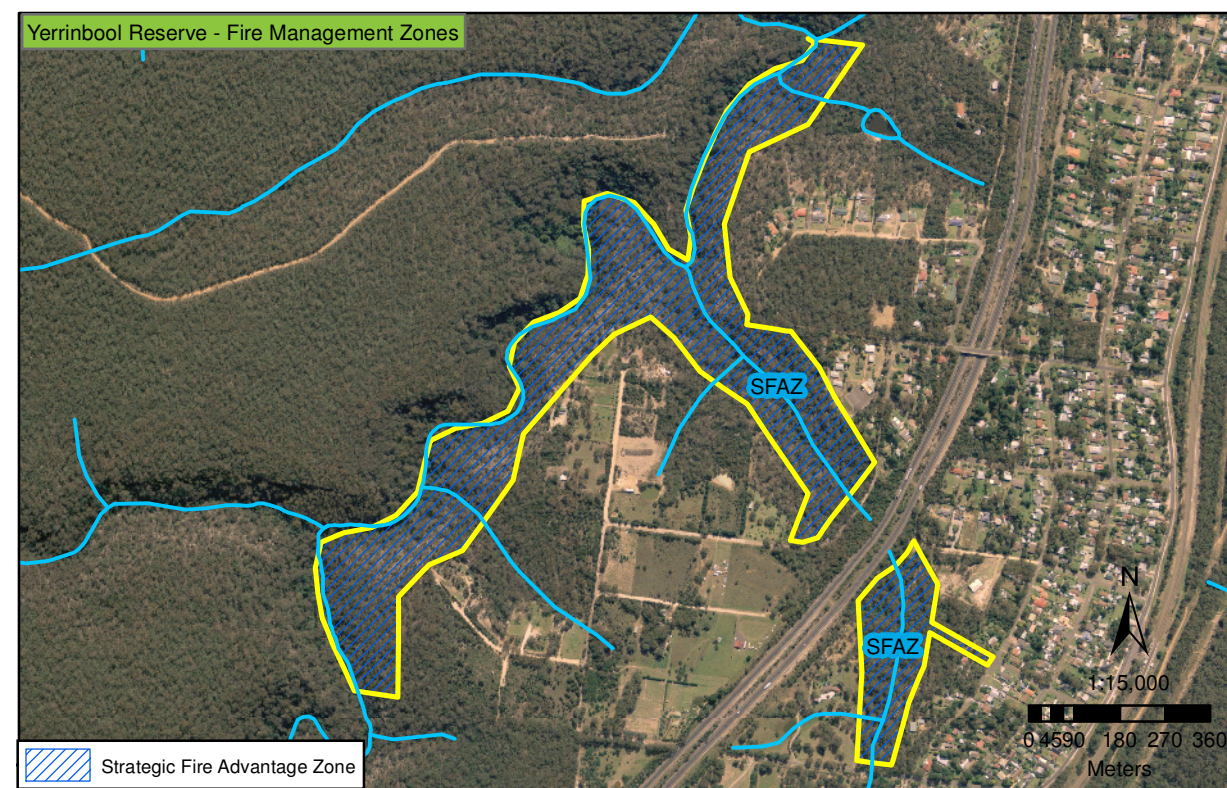
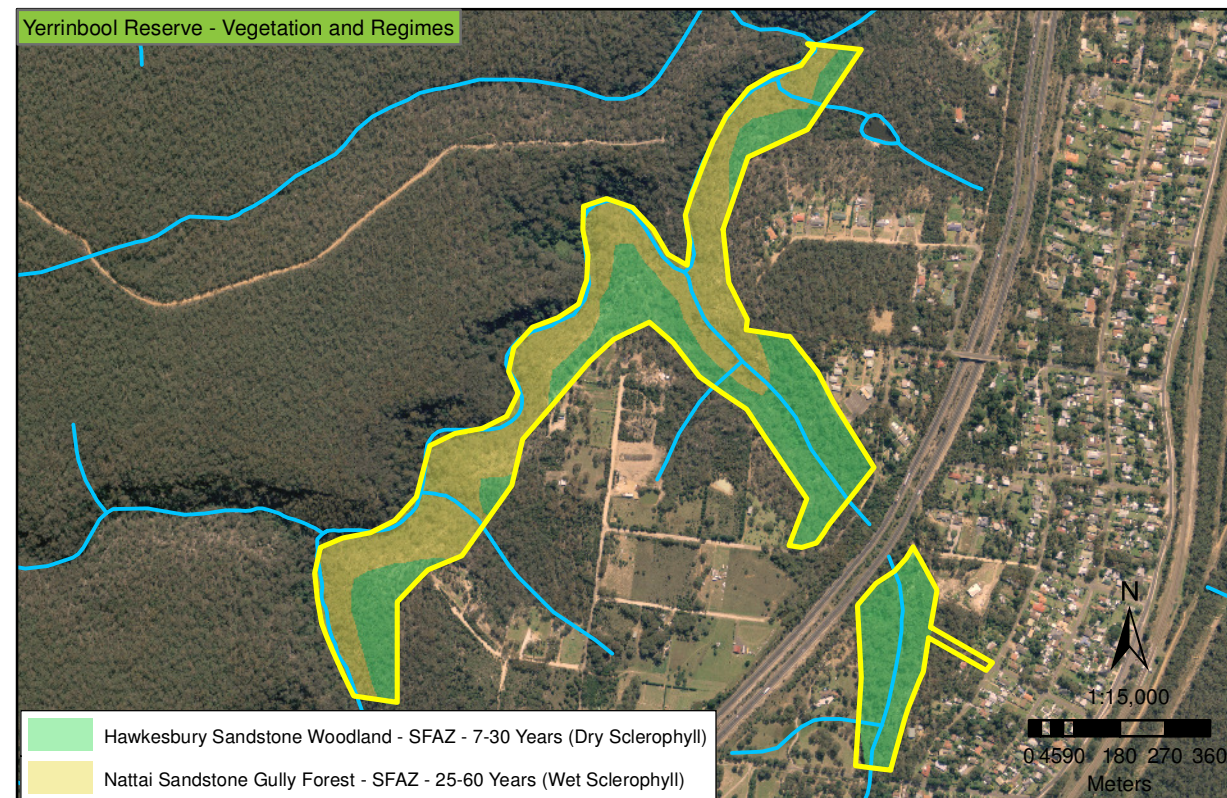
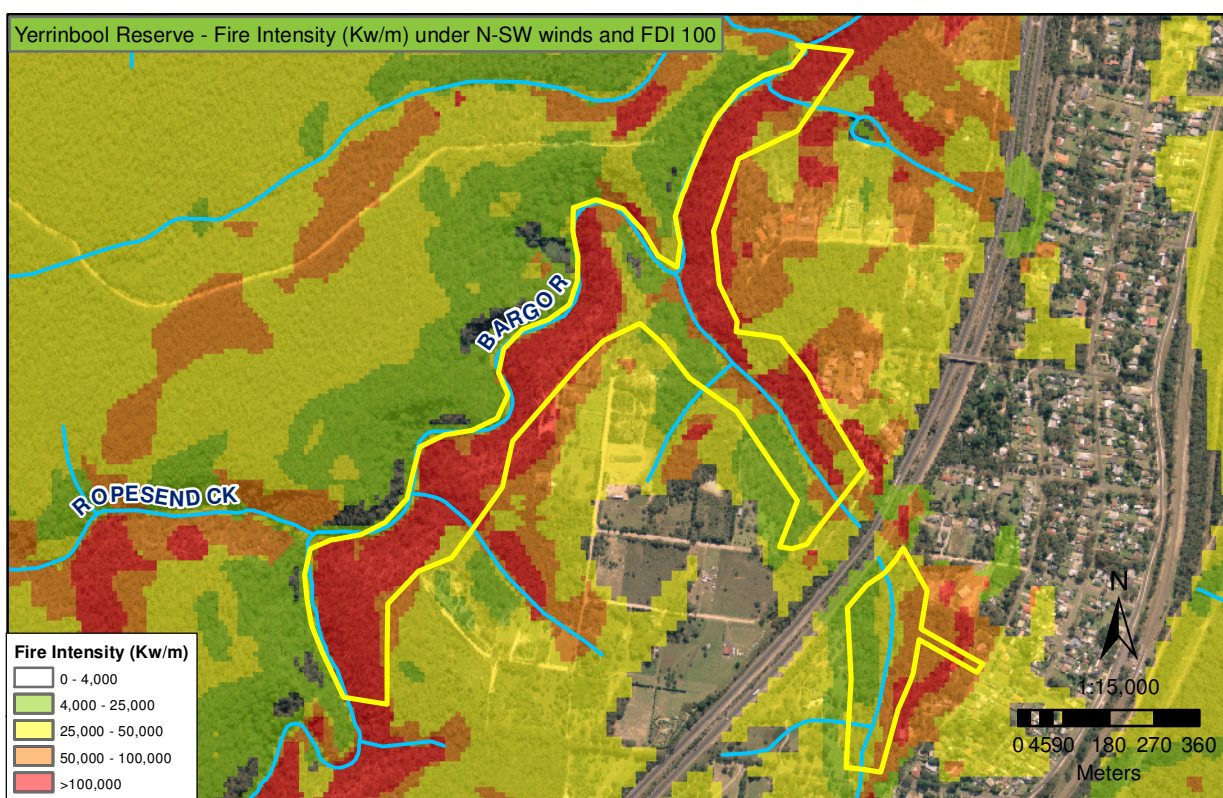
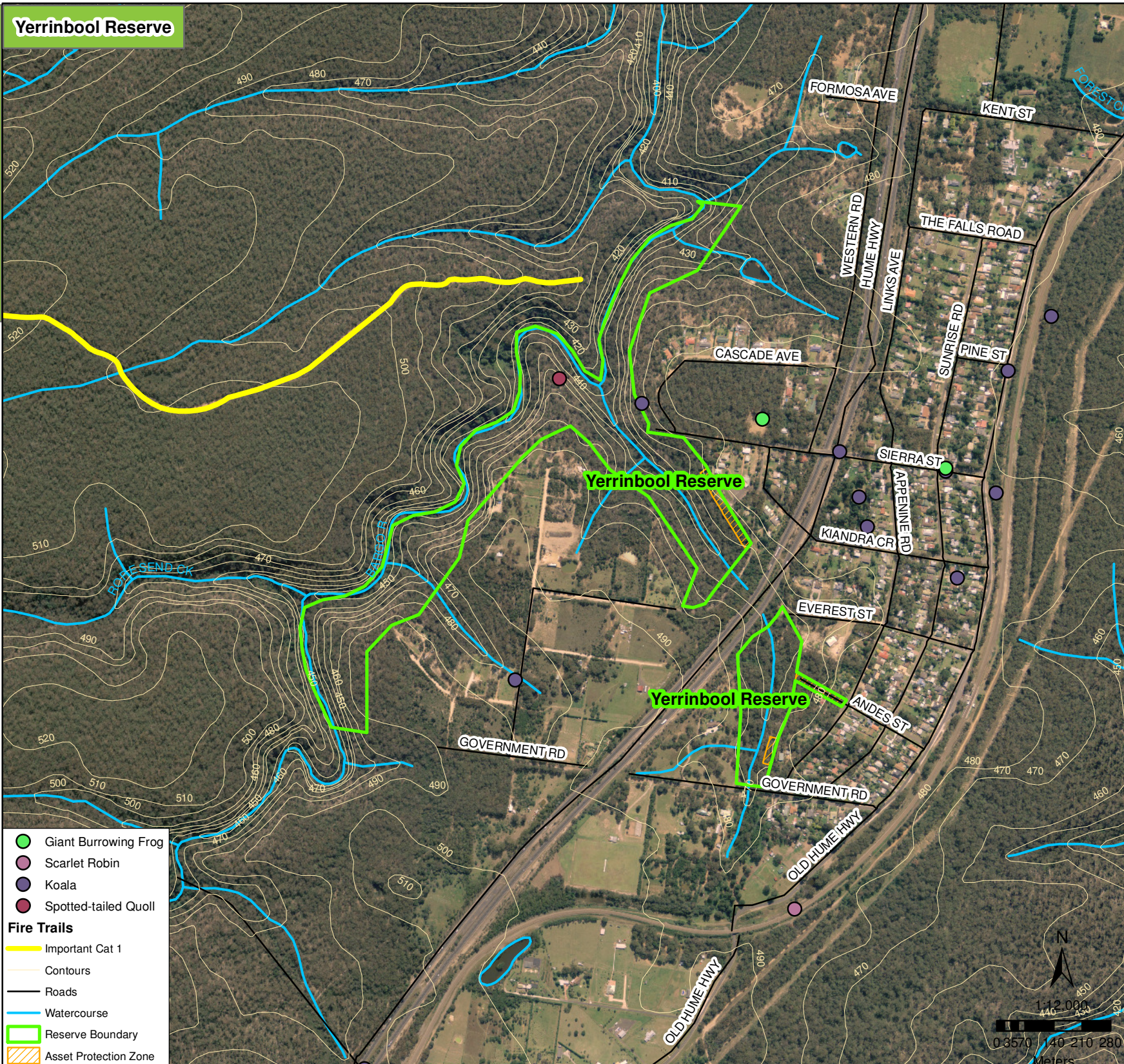
Asset Protection Zones		
Reserve Name	Area (m ²)	Width of APZ
Boronia Park - Boronia Ave/Stanley St	12,340	10-20m
Boronia Park - Stanley St South	490	6m
Boronia Park - Wilson Drive	1,190	20m
Boronia Park - Harold St (Sewer Pump Station)	2,880	20m
Boronia Park - Harold St	970	20m
Boronia Park - Wilson Drive (Battleaxe)	1,400	20m
Yerrinbool Reserve - Cascade Cres & Baha'i School	4,320	20m
Yerrinbool Reserve - Unformed Andes St	2,715	20m
Yerrinbool Reserve - Appenine Rd	1,350	20m

Fire Management Actions – Boronia Park Hilltop			
	Fire Interval	Indicative Prescribed burn year	Comments
SFAZ 1	Maintain fire regimes using short range fire intervals Avoid successive fires at intervals less than 7 years Avoid fire exclusion for period greater than 10 years	2014 - 2018	<u>Burning Priority Areas</u> Reserve to be burned within thresholds Where possible burn zones in different years to created mosaic In deciding zones to burn give priority to zones in the following order: 1,2,3,4. This allows for burning to take place in conjunction with neighbouring land managers.
SFAZ 2	Maintain fire regimes using short range fire intervals For Woodland: Avoid successive fires at intervals less than 7 years Avoid fire exclusion for periods greater than 12 years For Wet Sclerophyll Forest: Avoid successive fires at intervals less than 25 years Avoid fire exclusion for periods greater than 40 years	2014 - 2018	
SFAZ 3	Maintain fire regimes using short range fire intervals Avoid successive fires at intervals less than 7 years Avoid fire exclusion for period greater than 12 years	2015 - 2019	
SFAZ 4	Maintain fire regimes using mid-range fire intervals Avoid successive fires at intervals less than 7 years Avoid fire exclusion for period greater than 15 years	2014 - 2018	
APZ	Maintain APZ's for properties on Harold St, Wilson Drive, Boronia Ave, Stanley St, at locations shown in poster plan, to standard specified in Section 4.2.1 of accompanying report		
Access	Ensure fire trails at locations shown are maintained in accordance with Section 4.3 of accompanying report		
Evacuation	Prepare Evacuation Plan for soccer fields. This must consider peak numbers, fire danger rating, time to evacuate, notification system and fires nearby.		

Wingecarribee Small Reserves Bushfire Management Plan Boronia Park & Yerrinbool Reserve



Fire Management Safeguards (Practices to Avoid) for Threatened Fauna	
SAFEGUARD OPTIONS	WHERE POSSIBLE, IN LOCATIONS OF KNOWN POPULATIONS AND/OR CORE HABITAT:
Safeguard 1	Avoid fire regimes beyond fire interval thresholds of the native vegetation communities making up the species habitat.
Safeguard 2	Avoid burning more than 30% of the local habitat of the species in any year
Safeguard 3	Avoid size of each burn patch being >50% of the smaller home range of the species
Safeguard 4	Avoid actual area burned being >75% of the total area within a burn perimeter
Safeguard 5	Avoid burning a small total area where post-fire herbivore overgrazing is a concern
Safeguard 6	Avoid lighting up more than 50% of the burn perimeter and allow fire to spread in a single direction. Avoid situations resulting in converging fire lines with no escape routes.
Safeguard 7	Avoid burning in breeding season. If a number of species with different breeding seasons occur in the burn area, avoid the breeding season of the most fire sensitive species.
Safeguard 8	Avoid high intensity fire by minimising the size of wildfires, ignition times during mid-day, ignition during higher fire danger periods and if possible suppressing wildfires prior to it affecting the population. Prescribed burning may be appropriate to reduce nearby fuel loads in the direction from which wildfire is expected.
Safeguard 9	Avoid scorching the overstorey canopy during prescribed burning
Safeguard 10	Avoid placing infrastructure (e.g. temporary utilities, re-routing trails, etc.) within habitat or near nesting and roosting sites
Safeguard 11	Avoid felling hollow-bearing trees during mop-up and control line construction
Safeguard 12	Avoid burning known den trees and roost sites during prescribed burning
Safeguard 13	Avoid felling feed trees during mop-up and control line construction
Safeguard 14	Avoid predation by, or competition with, feral animals (in areas where they occur) by implementing appropriate feral animal control measures in conjunction with the prescribed burning



Fire Management Actions – Yerrinbool Reserve			
	Fire Interval	Indicative Prescribed burn year	Comments
SFAZ	Maintain fire regimes using mid-range fire intervals For Hawkesbury Sandstone Woodland: Avoid successive fires at intervals less than 7 years Avoid fire exclusion for period greater than 15 years For Wet Sclerophyll Forest: Avoid successive fires at intervals less than 25 years Avoid fire exclusion for period greater than 60 years	2014 – 2020 except area in SW burnt in 2012	Burn currently approved by RFS for 2014
APZ	Establish and maintain APZ's at Cascade Cres extending to behind the Baha'i school, unformed Andes St, and property at Government Road end of Appenine Road at location shown in poster plan, to standard specified in Section 4.2.1 of accompanying report		

Threatened Fauna Considerations				
Scientific Name	Common Name	Boronia Park	Yerrinbool	Safeguard to be put in place
<i>Heleioporus australiacus</i>	Giant Burrowing Frog		✓	1, 2, 3, 4, 6, 7 & 8
<i>Pseudophryne australis</i>	Red-crowned Toadlet		✓	1, 2, 3, 4, 6, 7 & 8
<i>Callocephalon fimbriatum</i>	Gang-gang Cockatoo	✓		1, 8, 11, 12, & 13
<i>Anthochaera phrygia</i>	Regent Honeyeater	✓		1, 2, 3, 4, 6, 7 & 8
<i>Petroica boodang</i>	Scarlet Robin	✓		1, 2, 3, 4, 6, 7 & 8
<i>Tyto tenebricosa</i>	Sooty Owl		✓	1, 11 & 12
<i>Dasyurus maculatus</i>	Spotted-tailed Quoll		✓	1, 2, 3, 4, 6, 7, 8, 13 & 14
<i>Mormopterus norfolkensis</i>	Eastern Freetail-bat	✓		1, 6, 7, 8, 9, 10, 11, 12 & 13
<i>Phascogale cinereus</i>	Koala	✓	✓	1, 2, 3, 4, 6, 7, 8, 9, 13 & 14
<i>Miniopterus schreibersii oceanensis</i>	Eastern Bentwing-bat	✓		1, 6, 7, 8, 9, 10, 11, 12 & 13
<i>Myotis macropus</i>	Southern Myotis		✓	1, 6, 7, 8, 9, 10, 11, 12 & 13