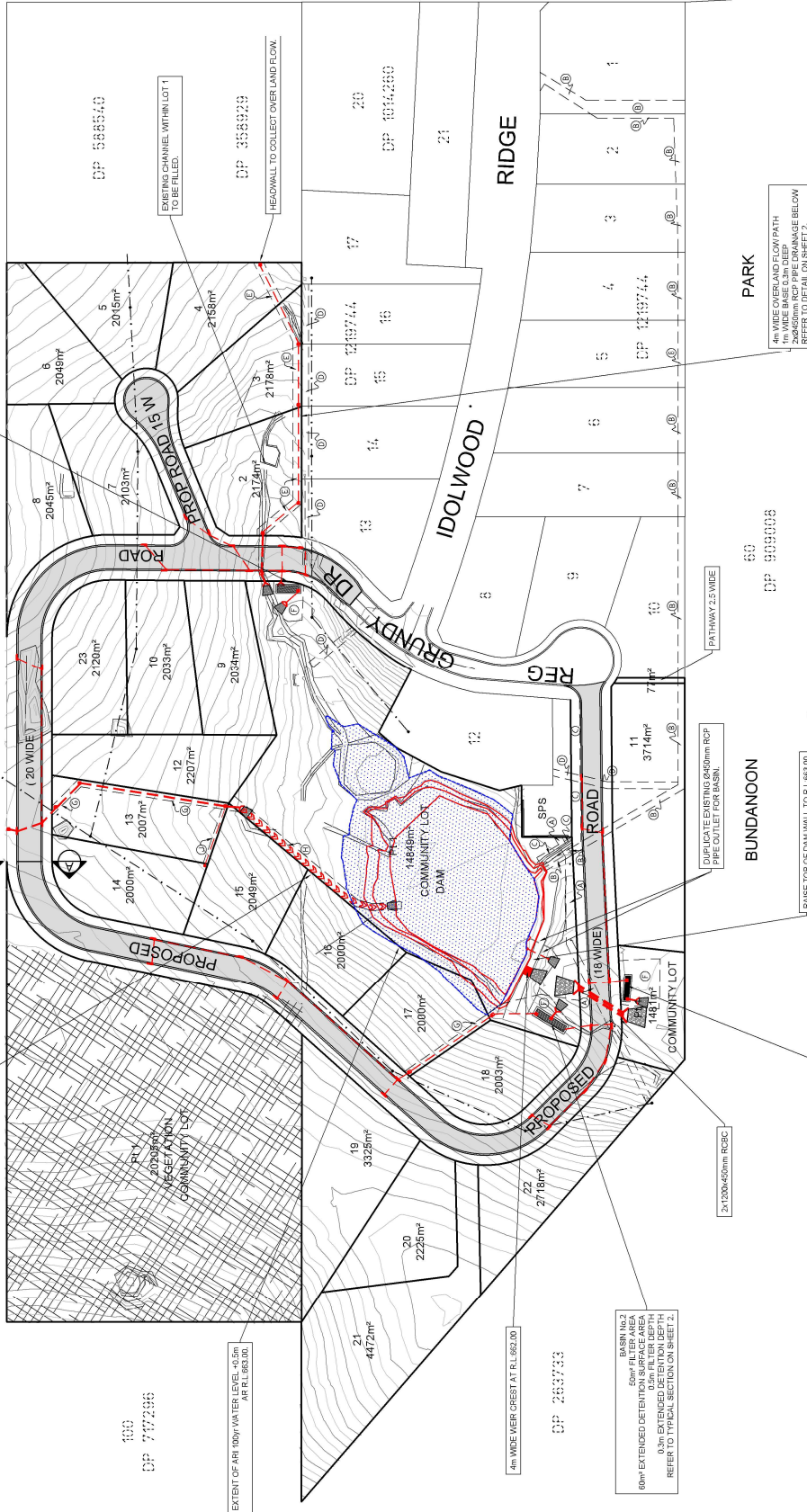




BASIN No.1
40m² FILTER AREA
1m BASE WIDTH
6m TOP WIDTH
0.3m DEEP
REFER TO TYPICAL SECTION ON SHEET 2.

BASIN No.2
50m² FILTER AREA
1m BASE WIDTH
6m TOP WIDTH
0.3m DEEP
REFER TO TYPICAL SECTION ON SHEET 2.

BASIN No.3
30m² FILTER AREA
1m BASE WIDTH
6m TOP WIDTH
0.3m DEEP
REFER TO TYPICAL SECTION ON SHEET 2.



LEGEND

- RAVINE
- PROPOSED SEWER SYSTEM

NOTES

- CONCEPTUAL SEWER LAYOUT ONLY.
- THESE PLANS ARE TO BE READ IN A SEQUENCE.
- ALL WORK SHALL BE IN ACCORDANCE WITH THE LOCAL GOVERNMENT'S PLANS AND SPECIFICATIONS FOR PUBLIC WORKS AND THE ENVIRONMENTAL REPORT (PART 10).

designator	J.C.	A1	sheet	revision
drawn	J.C.		job drawing number	
checked	R.A.		1923	
datum	A.H.D.		CD02	
date	21/04/21	sheet	1	of 4

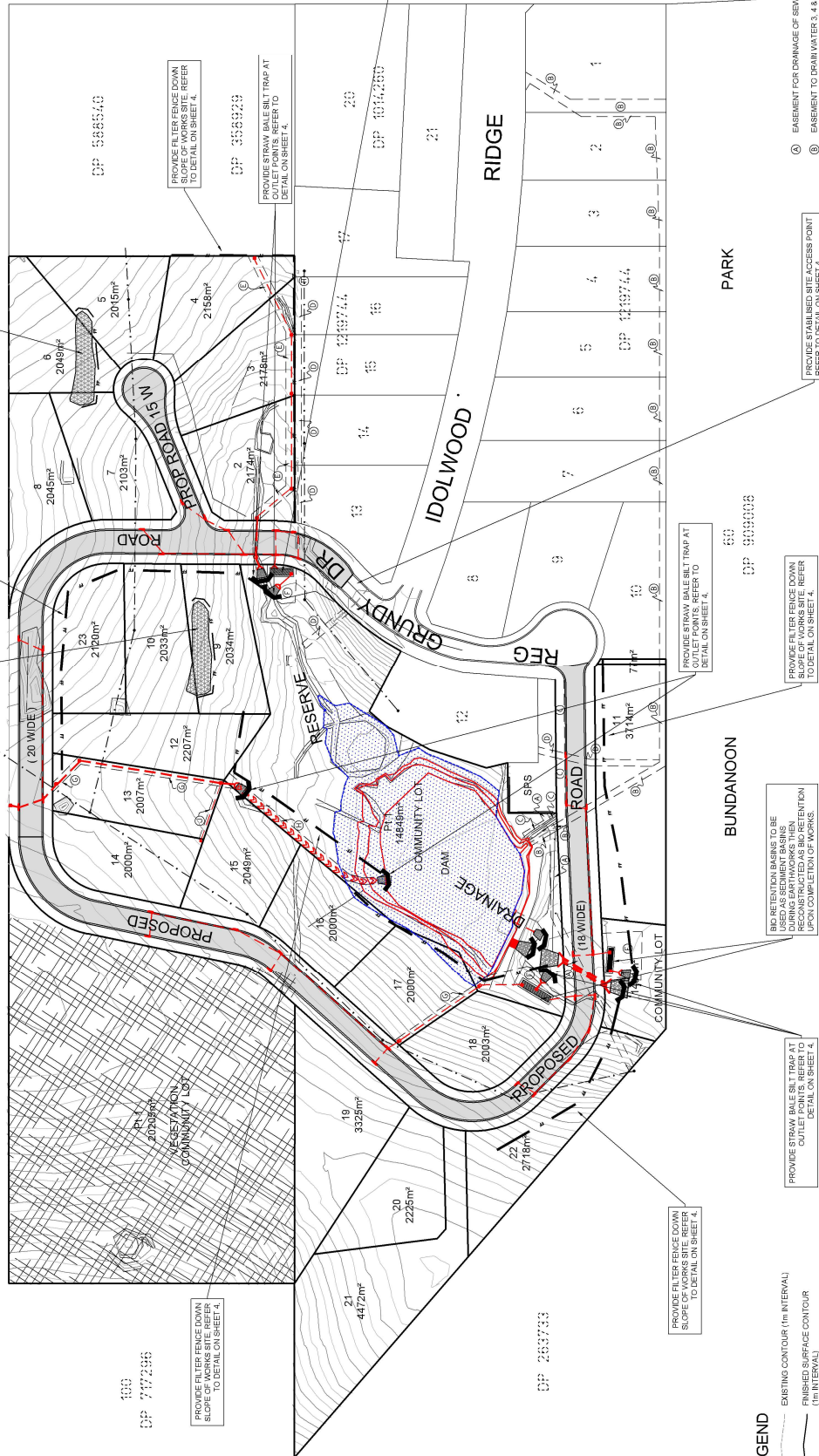
CONCEPT DRAINAGE PLAN	
WINGECARRIBEE SHIRE COUNCIL DA - LOT 11&18, DP 1219744 LOT 18 REG GRUNDY DRIVE BUNDANOON	R.G. CAPITAL
Scale: 1:1000	Sheet: 1 of 4

Civil Development Solutions Civil Engineering, Development and Project Consultants Unit 9, 44-48 Bowral Street, BOWRAL NSW 2576 P-4862-1277 E-admin@cdsolutions.com.au www.cdsolutions.com.au
--

revision	description	date	drawn	checked
1	Issue for tender	15/02/21	J.C.	J.C.
2	Client Amendments	23/02/21	J.C.	J.C.
3	Client Amendments	07/07/21	J.C.	J.C.
4	Client Amendments	20/02/22	J.C.	J.C.



NOTES:
THESE PLANS WERE PREPARED AS A PROPOSED SUBMISSION TO ACCOMMODATE A DEVELOPMENT APPLICATION FOR THE PROPOSED SEWER LAYOUT. THE NUMBER OF LOTS SHOWN HEREON ARE FOR INFORMATION ONLY AND DO NOT REPRESENT THE FINAL DEVELOPMENT. THE LOCAL GOVERNMENT'S PLANS AND SPECIFICATIONS FOR PUBLIC WORKS AND THE ENVIRONMENTAL REPORT (PART 10) MUST BE REFERRED TO FOR ALL REQUIREMENTS. THE LOCAL GOVERNMENT'S PLANS AND SPECIFICATIONS FOR PUBLIC WORKS AND THE ENVIRONMENTAL REPORT (PART 10) MUST BE REFERRED TO FOR ALL REQUIREMENTS. THE LOCAL GOVERNMENT'S PLANS AND SPECIFICATIONS FOR PUBLIC WORKS AND THE ENVIRONMENTAL REPORT (PART 10) MUST BE REFERRED TO FOR ALL REQUIREMENTS. THE LOCAL GOVERNMENT'S PLANS AND SPECIFICATIONS FOR PUBLIC WORKS AND THE ENVIRONMENTAL REPORT (PART 10) MUST BE REFERRED TO FOR ALL REQUIREMENTS.



- LEGEND**
- EXISTING CONTOUR (1m INTERVAL)
 - FINISHED SURFACE CONTOUR (1m INTERVAL)
 - UNDISTURBED AREA
 - TOPSOIL STOCKPILE
 - STRAW BALES (REFER DETAIL 1)
 - FILTER FENCE (REFER DETAIL 2)
- NOTES:**
- THIS PLAN WAS PREPARED AS A PROPOSED SUBMISSION TO ACCOMMODATE A DEVELOPMENT APPLICATION FOR THE EMERGENCY AREA AND TOTAL NUMBER OF LOTS SHOWN HEREON ARE FOR INFORMATION ONLY. THE EMERGENCY AREA AND TOTAL NUMBER OF LOTS SHOWN HEREON ARE FOR INFORMATION ONLY. THE EMERGENCY AREA AND TOTAL NUMBER OF LOTS SHOWN HEREON ARE FOR INFORMATION ONLY.
 - THE EMERGENCY AREA AND TOTAL NUMBER OF LOTS SHOWN HEREON ARE FOR INFORMATION ONLY. THE EMERGENCY AREA AND TOTAL NUMBER OF LOTS SHOWN HEREON ARE FOR INFORMATION ONLY.
 - THE EMERGENCY AREA AND TOTAL NUMBER OF LOTS SHOWN HEREON ARE FOR INFORMATION ONLY. THE EMERGENCY AREA AND TOTAL NUMBER OF LOTS SHOWN HEREON ARE FOR INFORMATION ONLY.
 - THE EMERGENCY AREA AND TOTAL NUMBER OF LOTS SHOWN HEREON ARE FOR INFORMATION ONLY. THE EMERGENCY AREA AND TOTAL NUMBER OF LOTS SHOWN HEREON ARE FOR INFORMATION ONLY.
 - THE EMERGENCY AREA AND TOTAL NUMBER OF LOTS SHOWN HEREON ARE FOR INFORMATION ONLY. THE EMERGENCY AREA AND TOTAL NUMBER OF LOTS SHOWN HEREON ARE FOR INFORMATION ONLY.

CONCEPT SOIL & WATER MANAGEMENT PLAN SHEET 1

WINGECARRIBEE SHIRE COUNCIL DA- LOT 11&18, DP 1219744
LOT 18 REG GRUNDY DRIVE BUNDANOON

EDS Civil Development Solutions
Civil Engineering, Development and Project Consultants
Unit 9, 44-48 Bowral Street, BOWRAL NSW 2576
P-4862-1277
E-admin@edsolutions.com.au
www.edsolutions.com.au

Client: R.G. CAPITAL

Revision	Revision Details	Drawn	Check	Date
A	Issue for Tender	J.C.	J.C.	15/02/21
B	Client Amendments	J.C.	J.C.	23/02/21
C	Client Amendments	J.C.	J.C.	01/03/21
D	Client Amendments	J.C.	J.C.	20/02/21
E	50% AMENDMENT	J.C.	J.C.	20/02/21

Scale: 1:1000

0 5 10 20 40 60 80 100 METRES

Assigned: J.C. A1 sheet revision
Drawn: J.C. Job Drawing Number
Checked: R.A. 1923
Date: 21/04/21 sheet 3 of 4
A.H.D. CD02

