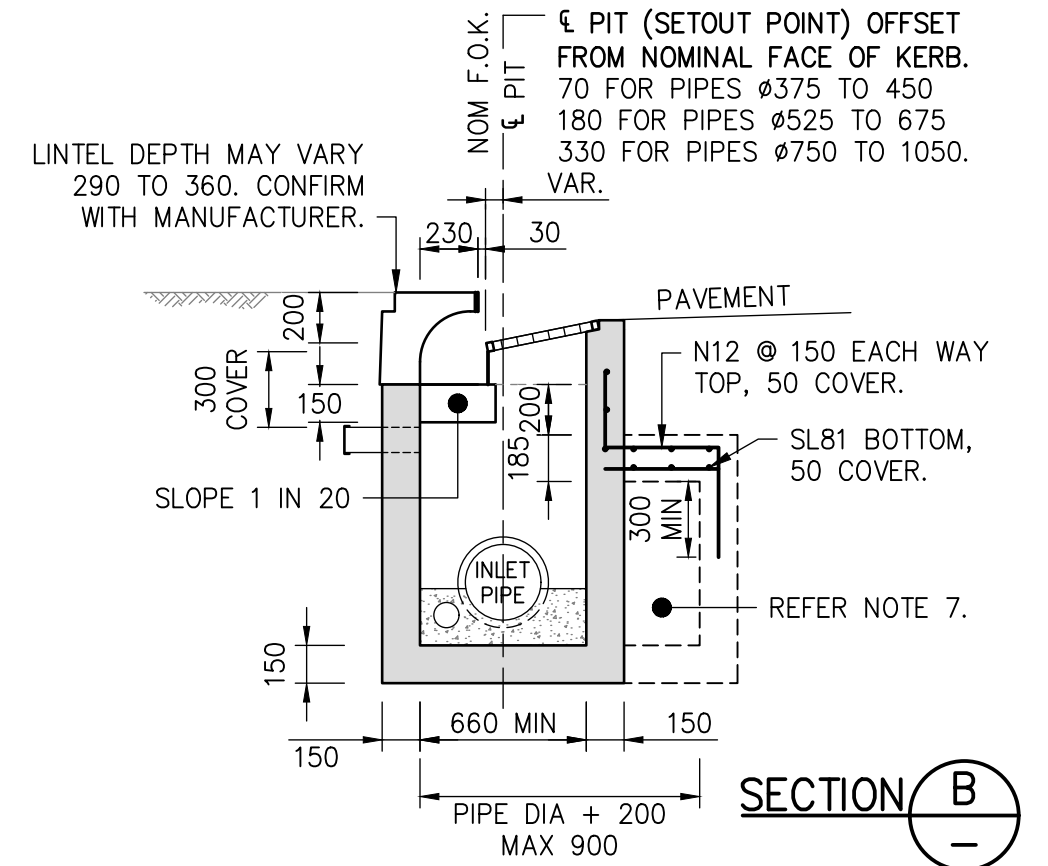
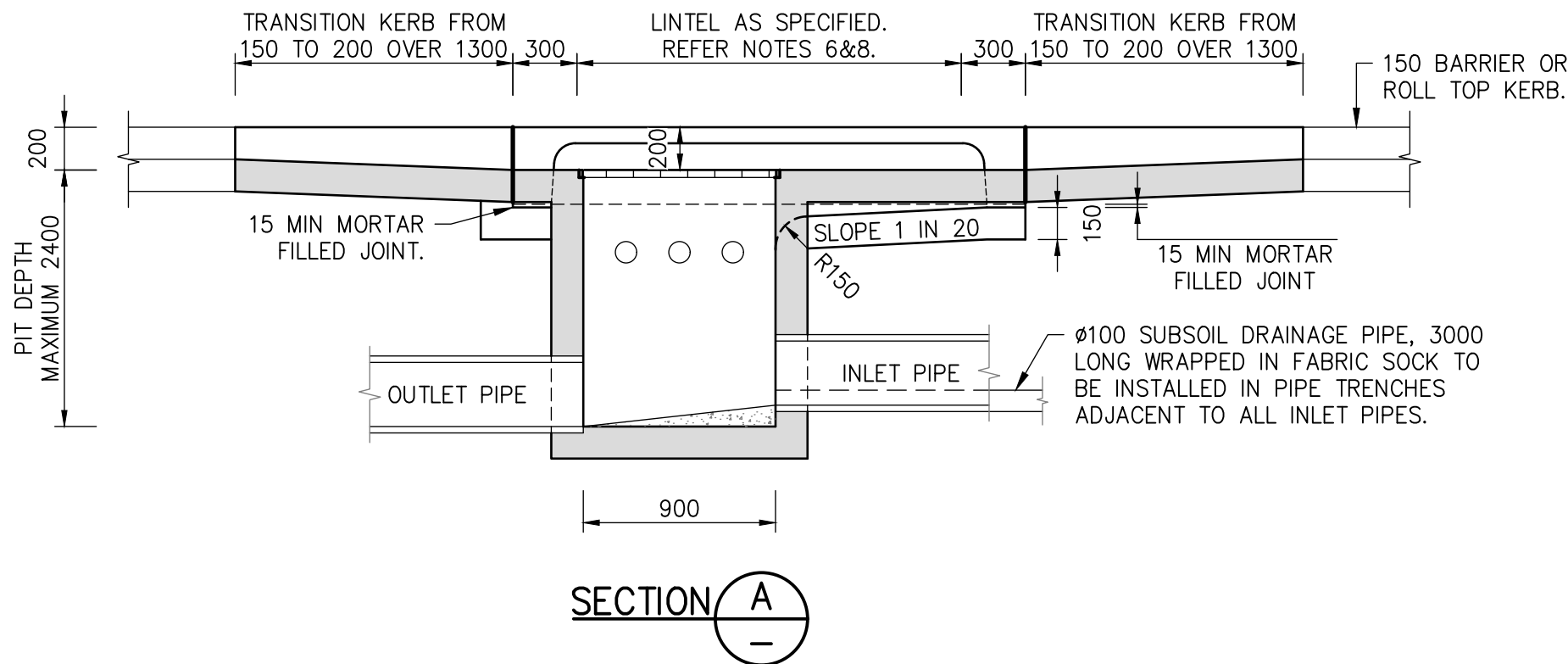


NOTES:

1. DIMENSION ARE IN MILLIMETRES.
2. THIS DRAWING APPLIES TO A MAXIMUM PIPE SIZE OF $\phi 675$ AND A MAXIMUM PIT DEPTH OF 2400.
3. REFER TO DRAWING No. SD116 FOR OTHER STANDARD DETAILS WHERE PIT DEPTH OR INTERNAL DIMENSIONS VARY.
4. INSTALL HOT DIPPED GALVANISED, THREE SIDED CLASS D GRATE, SIMILAR TO WELDLOK GG52-0900x0400D-C IN ALL LOCATIONS.
5. PROVIDE THREE (3) x $\phi 100$ H.D.UPVC INLET PIPES 300 LONG WITH CAPPED ENDS FOR FUTURE HOUSE CONNECTIONS.
6. LINTEL LENGTH IS OPENING LENGTH AND SIZED FOR FULL DESIGN INFLOW. NEGLECT GRATE CAPACITY.
7. INCREASE PIT CHAMBER FOR LARGER PIPES. FROM LINTEL WALL, EXTEND PIT TOWARDS ROAD WITH STEEL REINFORCING IN TOP DECK AS SHOWN.
8. LINTEL TO BE POSITIONED AND SET AFTER CONSTRUCTION OF STANDARD 150mm KERB AND GUTTER OR ROLL TOP KERB.
9. THE USE OF PRECAST PITS IS NOT PERMITTED IN COUNCIL'S ROAD RESERVES.
10. PROVIDE STEP IRONS WHERE PIT DEPTH EXCEEDS 1200.



A	REVISED ISSUE	TZ	25/01/21
ISSUE	AMENDMENTS	DRAWN	DATE



DRAWNTZ..

SCALE1:30..

SHEET SIZE: **A3**

APPROVED

[Signature]

GROUP MANAGER
INFRASTRUCTURE SERVICES
D.L.

WINGECARRIBEE SHIRE COUNCIL			
STANDARD DRAWING GRADED KERB INLET PIT			
DATE: 25/01/2021	PLAN No: SD112	SHEET 1 OF 1	ISSUE A