

## 2.2.6 Project Opportunity - Examples

*Catalyst developments will set a benchmark for future developments in the centre, particularly in terms of design character, sustainability and civic space*

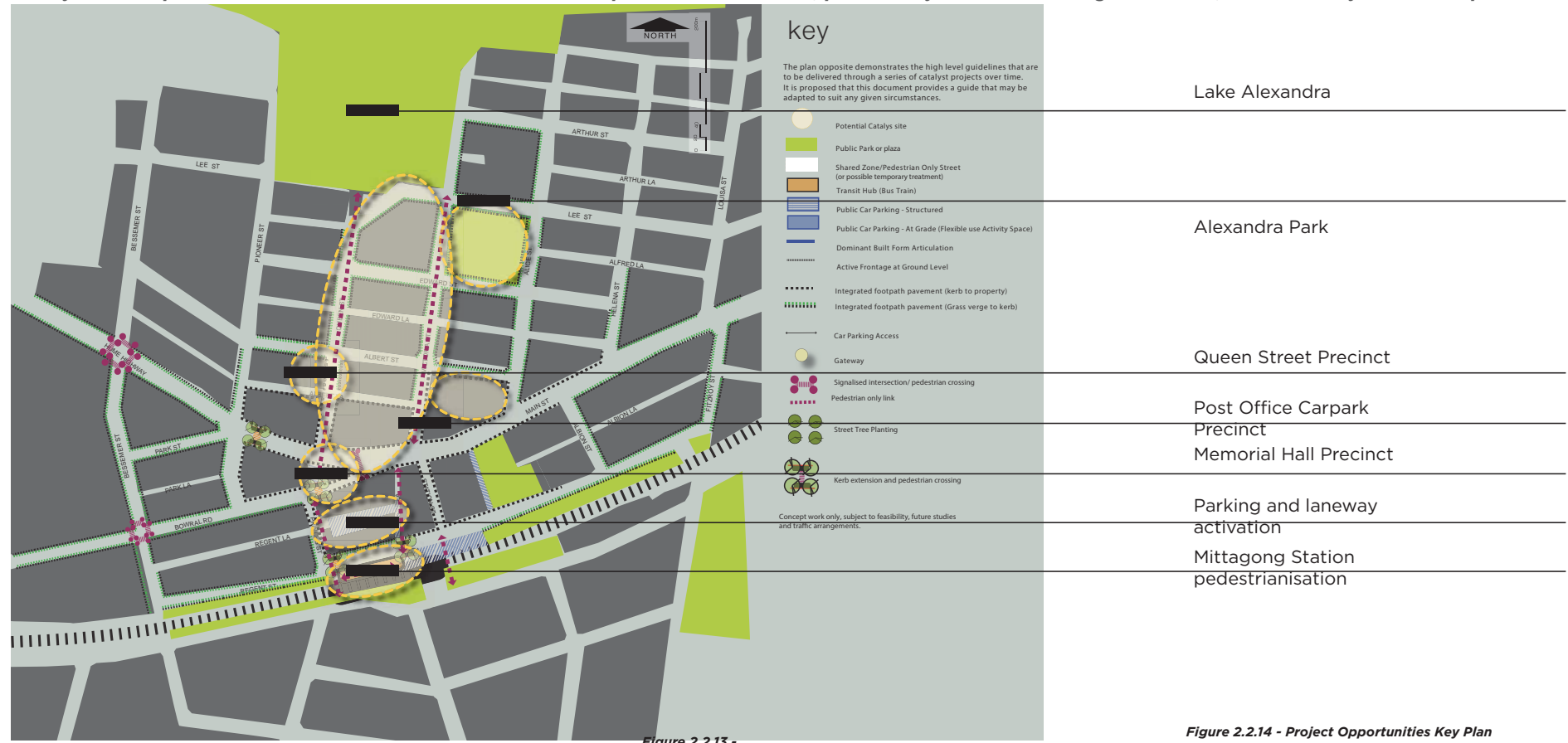


Figure 2.2.13 -

Figure 2.2.14 - Project Opportunities Key Plan



# Memorial Hall Precinct-Core

Queen Street Precinct offers community facilities including a Library, and community centre within an environment that resonates with history.

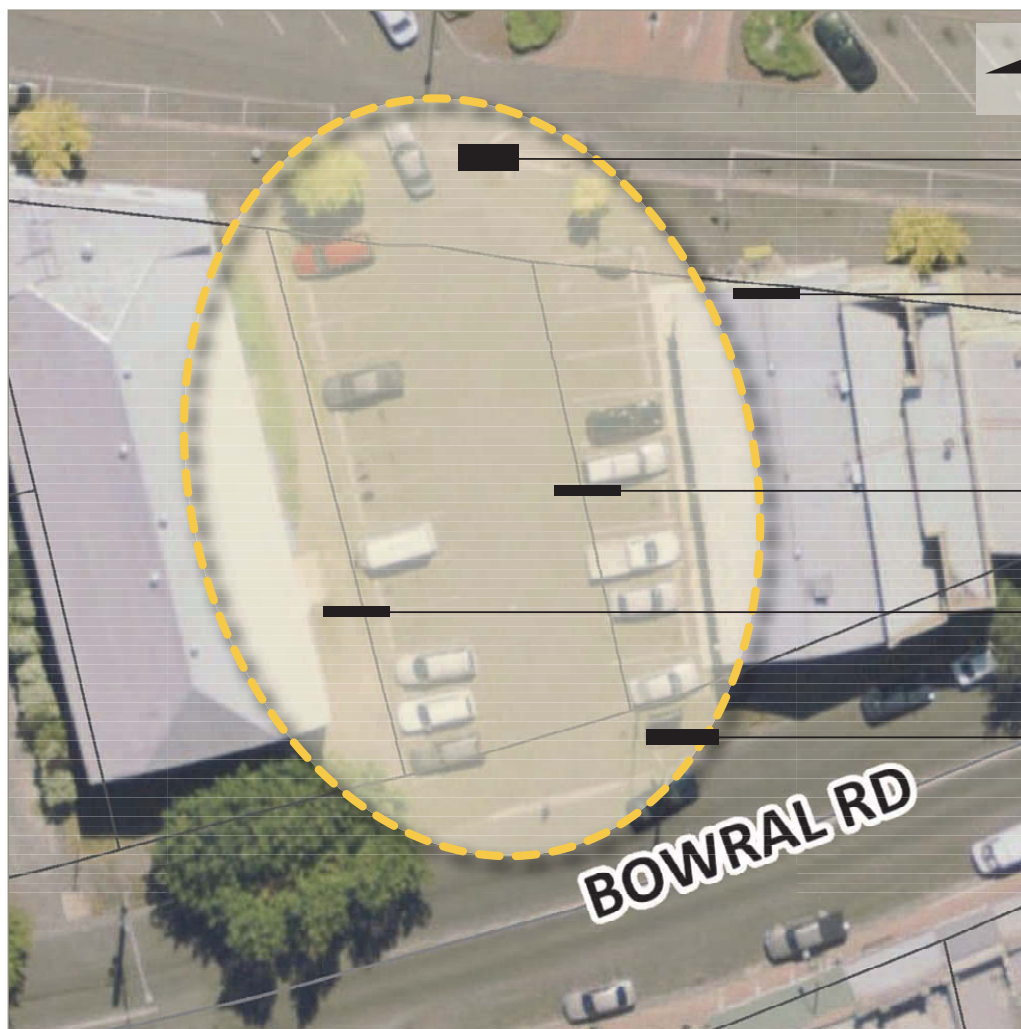
The carpark adjacent to the Memorial Hall provides an opportunity for an enhanced pedestrian and traffic/parking environment



Figure 2.2.15 - Memorial Hall Precinct context plan

Town Centre Master Plan  
Bowral | Mittagong | Moss Vale  
Version #2

Section 2.2 - 36 pages **32**



Upgrade carpark and pedestrian links to town centre

Improve building engagement and interface

Improve pedestrian safety and amenity within the carpark

Improve building engagement and interface

Address the space as a visual and functional asset within the Town Centre

# Core-Existing Context



# Core Activation-Opportunity

Retain existing carpark  
use as a "Shared Zone  
environment

Upgrade carpark and  
pedestrian links to town  
centre

Backdrop planting to  
rail corridor

Allow for flexible use as a  
Plaza space

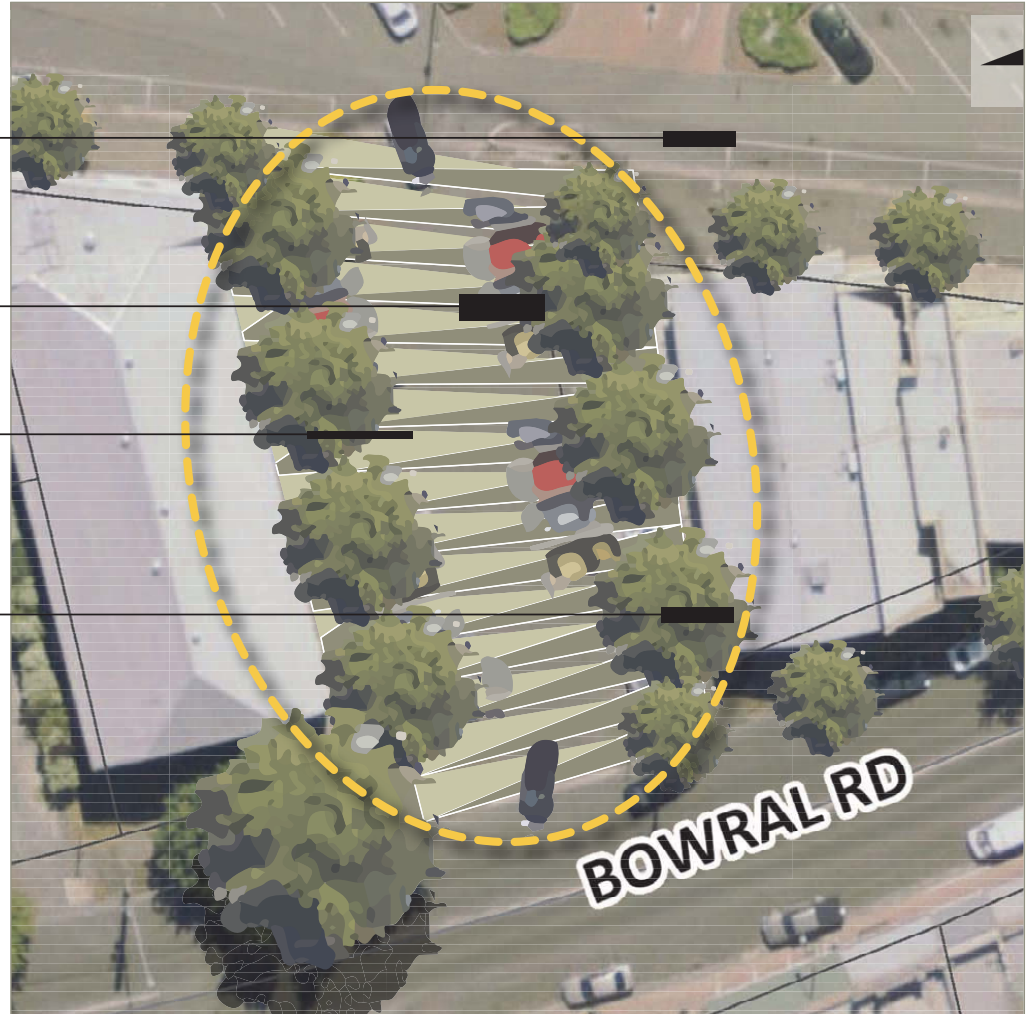


Figure 2.2.17 -

## 2.2.7 A3 size - Master Plan



