

ATTACHMENT 6 TO REPORT

Extraordinary Meeting of Council



We're With **YOU**

Wednesday 10 May, 2023

Council Chambers, Wingecarribee Shire Council Civic Centre

68 Elizabeth Street, Moss Vale at 3.30pm

Extraordinary Meeting of Council - 10 May 2023 Attachments

7.1 DRAFT RESOURCING STRATEGY 2023-2033, DELIVERY PROGRAM

2023-25, OPERATIONAL PLAN 2023/24 AND BUDGET FOR PUBLIC

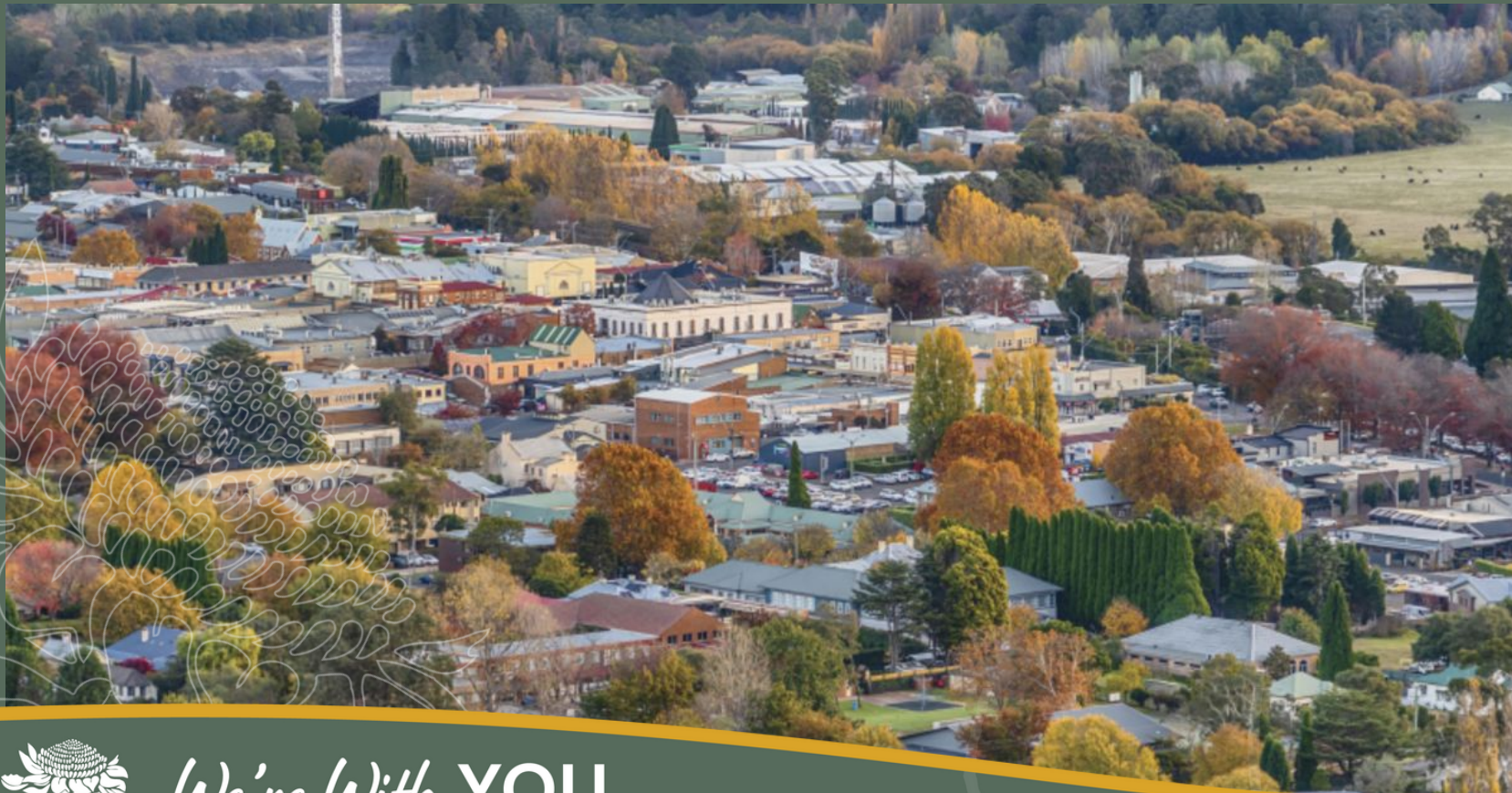
EXHIBITION.....2

7.1.5 Attachment 6: Shire Priorities 2023.....2



SHIRE PRIORITIES 2023

to support social, economic and environmental sustainability in the Wingecarribee Shire



We're With **YOU**

*Wingecarribee Shire Council acknowledges the Gundungurra and Tharawal people as the traditional custodians of this land we now call the Wingecarribee.
We pay our respect to Elders both past, present and emerging.*

Contents

Introduction	1
Overview of the Shire	2
Wingecarribee Shire Priorities -2023	4
1. Resilience to Natural Disasters	5
2. Transport and Road infrastructure	6
3. Environment and Resource Management	7
4. Strategic Planning and Housing	8
5. Healthy and Strong Communities	9
6. Employment and Investment Opportunities	10
Advocacy Priorities	11
Council Led Projects	16



Introduction

Wingecarribee Shire is continuing to move forward. In recent years bushfire, multiple severe storms, flooding events and COVID-19 have had a compounding effect on the community and economy.

The border closures and the impact of other global economic influences have been acutely felt through our Shire.

Low rate peg increases, increasing inflation and escalations in costs have also had an impact on the sustainability of local Councils.

Further, the projected growth of our Shire requires significant infrastructure investment to ensure asset capacity and that the values held by the community are retained and enhanced.

Our focus is to add value to our local economy, provide the infrastructure and services that our communities need and want; and preserve and capitalise on our natural assets.

To do this we need all spheres of government to stand together and invest in a sustainable future for the Wingecarribee Shire.

This document sets out our priorities for 2023 to assist in positioning Wingecarribee for the future and ensure we have the infrastructure and services available for our community now and into the future and support the vision of the Community Strategic Plan.

Our Community Vision

In 2041, we will be...

*A healthy, respectful and productive
community, learning and living in harmony,
proud of our heritage and nurturing our
environment.*

Our Shire

LOCATION AND GEOGRAPHY

Wingecarribee is located 75 km from the south-western fringe of Sydney and 110 km from Sydney's central business district.

The Shire is approximately 2,700km², with 56% of which is north of the Wingecarribee River.

It is comparable in size to that of urban Sydney, averaging 55km from east to west and 45km from north to south, with its geographic centre north-west of Berrima and its demographic centre to the south-east of Bowral. Much of the Shire is located at or above 640m above sea level.

ENVIRONMENT

The Shire has outstanding biodiversity values primarily due to a diverse geology, large rainfall gradient east to west and the altitude changes that occur resulting in many different habitat types. Habitats include sandstone forests, tall forests, rain forests, grassy woodlands, Permian slopes, riverine habitats, and upland swamps.

There is diversity of native flora, with over 2,150 species. There are over 370 vertebrate fauna species, approximately 50 threatened plant species, over 56 threatened animal species and one endangered animal population in the Shire. There are also 15 Threatened Ecological Communities, and over 69 different plant community types.

The Shire is home to the largest koala population in southern NSW, with more than 3,000 koalas estimated to reside in the Shire, which represents approximately 10% of the total number of koalas left in the State's wild.

The Shire has large areas of high conservation value including part of the World Heritage Greater Blue Mountains area, and two declared wilderness areas.



ABORIGINAL AND TORRES STRAIT ISLANDER AUSTRALIANS

Council acknowledges the Gundungurra and Tharawal (or Dharawal) people as the traditional custodians of this place we now call the Wingecarribee Shire.

The Wingecarribee, Wollondilly and Nattai Rivers which run through the Shire are closely connected to the culture, dreaming and songs of the traditional custodians.

The remains of prehistoric and historic Aboriginal occupation exist throughout the Shire. State Government records indicate over 400 significant Aboriginal sites within the Shire, including 86 sites or objects that exist in the vicinity of Council-managed land or roadside reserves. The Shire includes one sacred Aboriginal Place called Nungunungulla (Jubilee Rocks), which in 2015 was declared by the State Government as the 100th Aboriginal Place in New South Wales.

Our Community

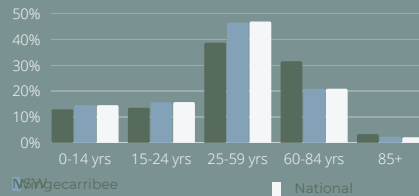
POPULATION

2021 Population = 52,456 = 1,000 residents

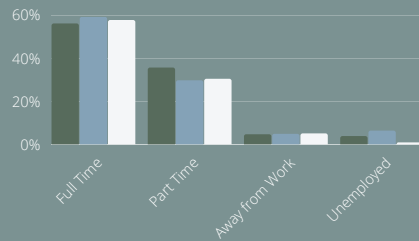


ABS ERP 2021
population increased by 4,825 people (10.1%) from 2016 to 2021. An average of 1.94% per year over the period.

AGE STRUCTURE



EMPLOYMENT



HOUSING



*Source: <https://forecast.id.com.au/wingecarribee> prepared by id (informed decisions), October 2021 and ABS Statistics

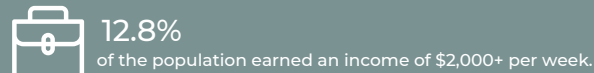


In 2021, 2,940 people (or 5.6% of the population) reported needing help in their day-to-day lives due to disability. This was a similar percentage to 2016.



In 2016 Median age is 47 years compared to State average of 38 years

- The largest changes in the age structure between 2016 and 2021
- Seniors (70 to 84) (+2,036 people)
 - Young workforce (25 to 34) (+775 people)
 - Older workers and pre-retirees (50 to 59) (+454 people)
 - Parents and homebuilders (35 to 49) (+345 people)



Our Services

- 1 saleyard
- 71 sewer pump stations
- 466 km Gravity Mains sewer
- 69 km Rising Mains sewer
- 655 km of water mains
- Approx 19% receive pensioner rebates
- 15 water pump stations
- 17231 Mts/ res & 32 Bulk Mts
- 1 Animal Shelter
- 3 water treatment plants
- 2 dams
- 4 pools
- 711 tonnes kerbside garbage collected
- 13 cemeteries
- 1 Resource Recovery Centre
- 129 parks & gardens
- 1237 kms of roads (local and regional, sealed and unsealed) (approximately Moss Vale to Bunderberg)
- 63 Bridges
- 17673 Water Service connections
- 181 km stormwater conduits
- 19,000 households receive garbage services
- 330 buildings
- 3 libraries
- 50 playgrounds



Wingecarribee Shire Priorities 2023



We're With **YOU**

1. RESILIENCE TO NATURAL DISASTERS

Priorities 2023

Reducing disaster risk is critical to supporting communities and economies to be resilient in challenging times. The sheer scale of these disasters demands a far greater emphasis on coordinated action to limit adverse impacts on communities.

Council is actively wanting to strengthen resilience through a focus on:

- prevention
- preparedness
- response
- recovery

There is a need from the NSW and Australian Government to:

- Fund the fit out of an Emergency Operations Centre in Moss Vale - funding of \$450K
- Increase financial support and funding for restoration, remediation and betterment of local community infrastructure, in advance of disasters where the risks are identified and in the recovery stage.
- Expand mobile coverage to the whole region.
- Invest further in disaster hazard risk reduction programs such as cultural burning.



Key project:

Emergency Operations Centre in Moss Vale - \$450K





2. TRANSPORT AND ROAD INFRASTRUCTURE

Priorities 2023

Transport and Road Infrastructure are vital for local communities and supporting local economies.

The rail network is critical public transport infrastructure for the Shire. As the State Government is the custodian of the rail network, Council will continue to advocate to the State Government on a number of issues that will ensure it has an efficient transport network across all modes of transport.

An effective transport network will be achieved through:

- Continued and increased funding for the road networks
- Improved public transport through increased frequency of rail services to Macarthur and Central stations
- Disability access to Moss Vale Train Station
- Unlocking economic growth by providing funding for the Moss Vale By-Pass to service the Southern Highlands Innovation Park
- Advocating for a station in Wingecarribee as part of the High Speed Rail Project
- Seeking additional Government funding to ensure the capacity of our road network can support our growing community.

Council is aiming to seek funding to further provide resilient infrastructure that aligns with the current and future needs of the community.

Key projects:

- Berrima Road Deviation - \$ 21.1 million
- Moss Vale Bypass - \$ 197 million



3. ENVIRONMENT AND RESOURCE MANAGEMENT



Priorities 2023

Moving to a circular economy will provide long-term economic, social and environmental benefits for the local community. Council continues to call for greater investment in initiatives that will improve environmental outcomes.

To support our community to be sustainable and have the require infrastructure to support new communities as planned for in the adopted Local Housing Strategy there is a need for major investment in water and waste water infrastructure.

Given the quantum of costs, co-investment with other spheres of government is required. This involves additional funding to supplement existing Council funds for the upgrade of its sewer treatment plants and the Wingecarribee water treatment plant.

Council will continue to advocate for funding opportunities to ensure that the following outcomes can be delivered in a timely manner:

- Implement best practice circular economy by supporting innovative local actions through government assistance.
- Investment in our key infrastructure to ensure the efficient use of our natural resources through government Assistance.
- Support the restoration and ongoing management of the local environment to ensure it is climate resilient.

To reduce the impact on the environment and to adopt practices that use resources sustainably, our approach is to:

- Comply with requirements of government legislation and regulations as applies to environmental sustainability
- Introduce policies and programs to achieve the 2030 greenhouse gas emissions reduction

Key Projects

- Bowral Sewer Treatment Plant - \$ 56 million
- Moss Vale Sewer Treatment Plant - \$ 55 million
- Mittagong Sewer Treatment Plant - \$ 50+ million
- Wingecarribee Water Treatment Plant - \$6 million



4. STRATEGIC PLANNING AND HOUSING

Priorities 2023

Council's vision is to create prosperous, equitable and sustainable Shire, that provides transport options, a range of industries and encourages people to meet and businesses to flourish.

Council's Planning approach will include coordinating with State government agencies to boost approval and construction processes and ensure the planning framework provides the right balance.

Council continues to advocate the State government to support Planning initiatives and commit to:

- new housing in line with the adopted Local Strategic Planning Statement and Local Housing Strategy
- funding to support the required studies which include the Wingecarribee Employment Lands Review and master plans for Moss Vale and Mittagong
- support for affordable housing models and housing stock that supports ageing in place
- Town centre Master plans for Moss Vale and Mittagong

Council is also currently working with Affordable Housing providers to acting as enable maximise the potential of developing affordable housing through existing development controls

Council will continue to advocate to the State government to invest in their assets by means of converting existing dwellings to provide increased affordable housing supply in our region.



Key projects

- New Living Master Plan and Service Strategy: Mittagong East Study - \$300,000
- Wingecarribee Employment Lands Review - \$150,000
- Town-Centre Master Plans for Moss Vale and Mittagong - \$360,000



5. HEALTHY AND STRONG COMMUNITIES

Priorities 2023

Council will continue to work with State and Australian Government to support and build stronger communities. To do this:

- Seek funding and support for domestic violence services including local accommodation
- Improved recreation opportunities such as the Southern Village Iconic Walking Trail, the Greenway and support for the Southern Highlands Botanic Gardens
- Seek opportunities to operate youth centres and other health services, which will help to ensure this access is maintained at an appropriate standard
- Seek funding to preserve and celebrate local heritage
- Support and enhance arts and cultural facilities, including core funding for the Ngunnungulla Regional Gallery and investigate the feasibility of a regional performing arts centre
- Continue efforts to expand the Aboriginal workforce, including initiatives to provide career pathways and leadership roles.



Key Projects:

- Funding domestic violence services including accommodation through a wrap around service model
- Walking Track Strategy - \$6.5 million
- Southern Village Iconic Trail - \$20 million
- Playspace Strategy - \$5 million
- Mittagong Playhouse Refurbishment - \$7.5 million
- Feasibility Study for Regional Performing Arts Centre - \$135,000



6. ECONOMIC DEVELOPMENT AND EMPLOYMENT

Priorities 2023

Severe skills and labor shortage is hampering the economic recovery and hindering the ability to deliver the level of services, communities require.

Key initiatives to achieve this will be to:

- Engage key government agencies, non-government organisations (NGOs), industry partners and the private sector to enable and connect people with the right skills, experience and qualifications needed to secure jobs within identified industries across the Shire.
- Providing Investment options which underpins the creation of better places that support the physical, social, cultural, environmental, and economic wellbeing of the community, including a focus on agri-business.
- Drive local economic recovery through initiatives to address labour and skills shortages impacting primary producers and businesses across the region.
- Create economy with a diverse industrial base and adaptable workforce that has greater capacity to respond to economic shocks and recover rapidly by reallocating resources to capture new growth opportunities.
- Support and funding for tourism and local economic development initiatives

The High Speed Rail or a fast train stop in Moss Vale would benefit the Shire by supporting:

- access to the Southern Highlands Innovation Park as a critical piece of enabling infrastructure
- supporting tourism based visitations.
- providing fast and easy labour transport to address the labour shortages within the hospitality and aged care sectors.



Key Project

- Southern Highlands Innovation Park (SHIP) - \$600,000
- Loop Line viewing platform - \$5 million





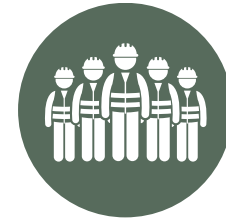
Advocacy Priorities



We're With **YOU**

High Speed Rail Project

STATE : WOLLONDILLY / GOULBURN
FEDERAL: HUME / WHITLAM



With the Australian Government passing the new High Speed Rail Authority Bill 2022, the High Speed Rail Authority are developing the concept of a high speed rail network in Australia connecting the major cities to significant regional locations. We are advocating that Wingecarribee Shire be included as a Regional stop.

DESCRIPTION

The High Speed Rail Authority is working with NSW Government on a proposed concept to connect the capital cities along the east coast of Australia which would eventually connect Brisbane to Melbourne, with stops in Canberra, Sydney and regional centres.

The south inland corridor would dissect through the centre of Wingecarribee Shire from north to south as it links Sydney to Canberra.

A Regional stop in our Shire would create economic, accessibility and infrastructural benefits to the region.

LOCATION



PROJECT BENEFITS

The High Speed Rail or a fast train stop would benefit the Shire by supporting:

- access to the Southern Highlands Innovation Precinct as a critical piece of enabling infrastructure
- supporting tourism based visitations.
- providing fast and easy labour transport to address the labour shortages within the hospitality and aged care sectors.
- efficient and effective transport for our residents working in Sydney and Canberra.



Add a little bit of body text

Increased frequency of Train Services to the Southern Highlands

STATE : WOLLONDILLY / GOULBURN
FEDERAL: HUME / WHITLAM



Increased frequency of services to and from the Southern Highlands to Macarthur and Central Stations will reduce the reliance on private vehicles and deliver benefits to the environment.

A primary aspect of any transport network is the rail aspect of the network and ensuring it integrates well into the remainder of the transport network.

As the State Government is the custodian of the rail network, Council is advocating to the State Government on a number of issues that will ensure it has an efficient transport network:

- Consistent, more frequent services on the Southern Highlands Train line
- Aligning the service times and frequencies to ensure the utilisation of train services is maximised
- Modernisation of rail infrastructure and ensuring the capacity of carriages meets peak demand.

DESCRIPTION

PROJECT BENEFITS

The increase in frequency of Train Services to and from the Southern Highland will deliver:

- reduce dependency on private vehicles
- assist in the reduction the Shires carbon footprint
- support economic benefits from tourism based visitations.

LOCATION



Domestic and Family Violence

STATE : WOLLONDILLY / GOULBURN
FEDERAL: HUME / WHITLAM



The Wingecarribee Shire has limited services to support individuals and families who are experiencing domestic violence. Being a regional area, with limited public transport options, accessibility to services is critical to ensure the safety of those who have been victims of domestic and family violence.

Domestic violence is a serious problem which impacts many NSW families. In 2016, an estimated 17 per cent of Australian women aged 18 years and over (or 1.6 million women) had experienced violence by a partner since the age of 15 years.

According to the NSW Recorded Crime Statistics October 2021 to September 2022 the Wingecarribee Shire recorded 110 incidents of domestic violence. It should be noted that Domestic Violence is under reported.

There is a need for increased funding for services and facilities in the Shire to assist those who suffer from domestic and family violence:

- Temporary Emergency Housing
- Free Counselling Services
- Financial assistance including Free legal assistance / advice
- Health services



Affordable Housing

STATE : WOLLONDILLY / GOULBURN
FEDERAL: HUME / WHITLAM



Council is currently working with Affordable Housing providers to acting as enable maximise the potential of developing affordable housing through existing development controls

Council is now advocating the government to invest in their assets in our Shire to convert existing dwellings to provide greater number of affordable houses with our planning controls.

The perception of the Southern Highlands is that the area is highly affluent and is overlooked for these types of opportunities, where due to the limited housing supply and increase in rents and limited supply of housing stock, the issue of affordability is becoming more of an issue.

If not addressed, this will have an impact on local businesses that require such skilled workers to provide services in the hospitality and aged care sectors.



PROJECT BENEFITS

Affordable Housing benefits the entire community by:

- Contributing to mixed and sustainable neighbourhoods. It ensures people have access to appropriate, sustainable housing that meets their needs, and allows working families to remain close to their employment and community hubs.
- Supports local economies through the award of construction contracts, leasing of commercial spaces, and supplying a locally based workforce.
- Ensuring local people pay affordable rents means that families have sufficient levels of disposable income to fund household and living expenses, which is often crucial to the viability of local businesses.



Council Led Projects



We're With **YOU**

1.1 Emergency Operation Centre

STATE : GOULBURN
FEDERAL: WHITLAM



FUNDING SOUGHT **\$450,000**

TOTAL COST **\$450,000**

A review of Council's response to the Black Summer Bushfires 2019/20, undertaken by Dave Owens, recommended a secondary Emergency Operation Centre be created in Wingecarribee. Space in the Moss Vale Civic Centre building that is earmarked as future office space can easily be converted for this purpose.

DESCRIPTION

This project will provide a secondary emergency operation centre to be activated in the case of an emergency.

The site is part of the Council Administration Centre offering a location in the heart of Moss Vale.

Designs and costing have been prepared.

TIME FRAME

16 weeks from securing funding.

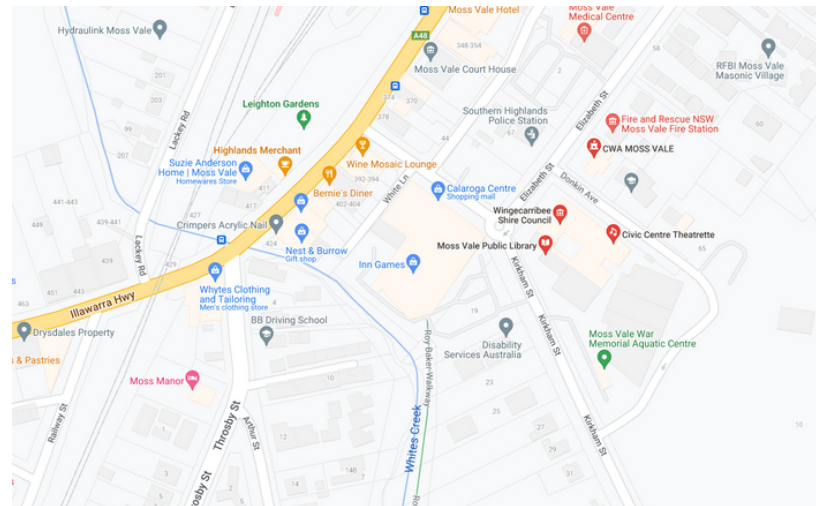
STATUS

Construction Ready. Seeking funding through Reconstruct NSW + other Disaster Funds.

PROJECT BENEFITS

- provides secondary Emergency Operation Centre locally that is central and adjacent to Police, Fire and Rescue and Moss Vale Showground
- provides a cost-effective solution as the shell is available – costs are for the fit out

LOCATION



Berrima Road Deviation Project



Currently traffic must stop at the railway crossing

2.1 Berrima Road Deviation Project Location



STATE: GOULBURN
FEDERAL: WHITLAM

The upgrade of the Berrima rail crossing is an integral part of the Moss Vale Enterprise Corridor now known as the Southern Highlands Innovation Park (SHIP).

FUNDING SOUGHT **\$17.3million**

TOTAL COST **\$21.1 million**

This project will divert Berrima Road away from the existing level crossing near Boral Cement Works to a bridge over the train line further east. The existing T-junction intersection at Berrima Road and Taylor Avenue will be replaced with a B-triple truck capacity roundabout and approximately 600m of new road constructed to remove a sharp bend. The project is an initiative from the Local Strategic Planning Statement (LSPS) and Moss Vale Enterprise Corridor Scheme Development Control Plan (DCP).

Scope includes the following items:

- Property Acquisitions and Easement Creation
- High Voltage Relocation (33kV and 11kV)
- Utility Adjustments (Telstra/Jemena Gas/Water Main)
- A road overbridge across the cement works rail line.
- New roundabout at the intersection of Berrima Road and Taylor Avenue.
- New road alignment that removes the level crossing near the cement works.

DESCRIPTION

Once funds secured and tender construction is 18 months to 2 years.

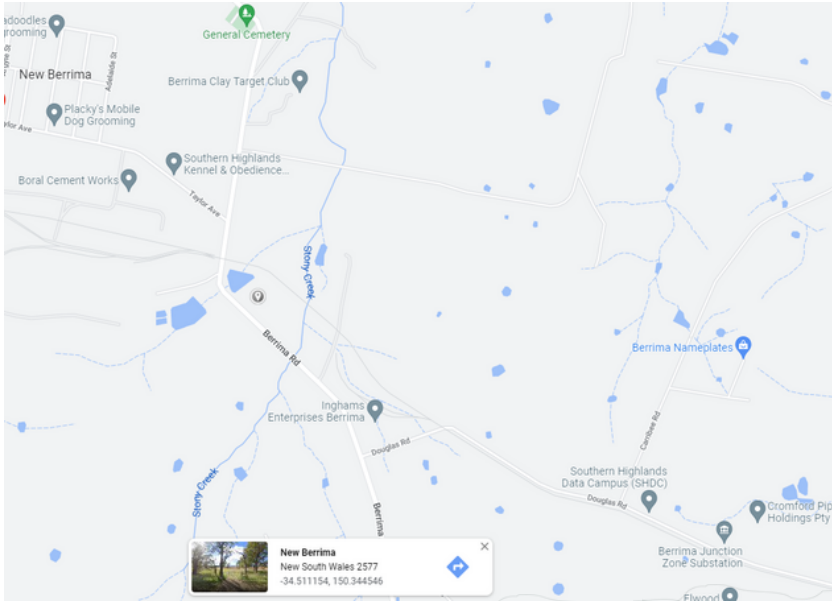
TIME FRAME

Ready for construction tender once funding established. Grant applied for \$17.3M under Fixing Country Roads Grant Program.

STATUS

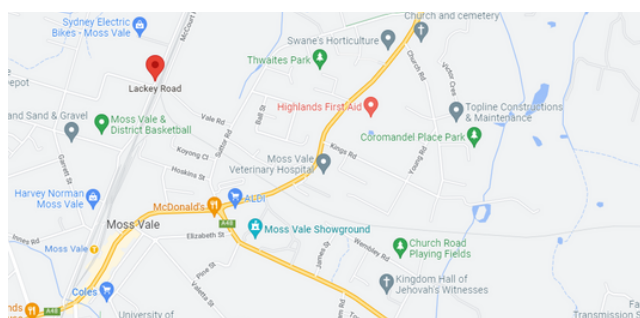
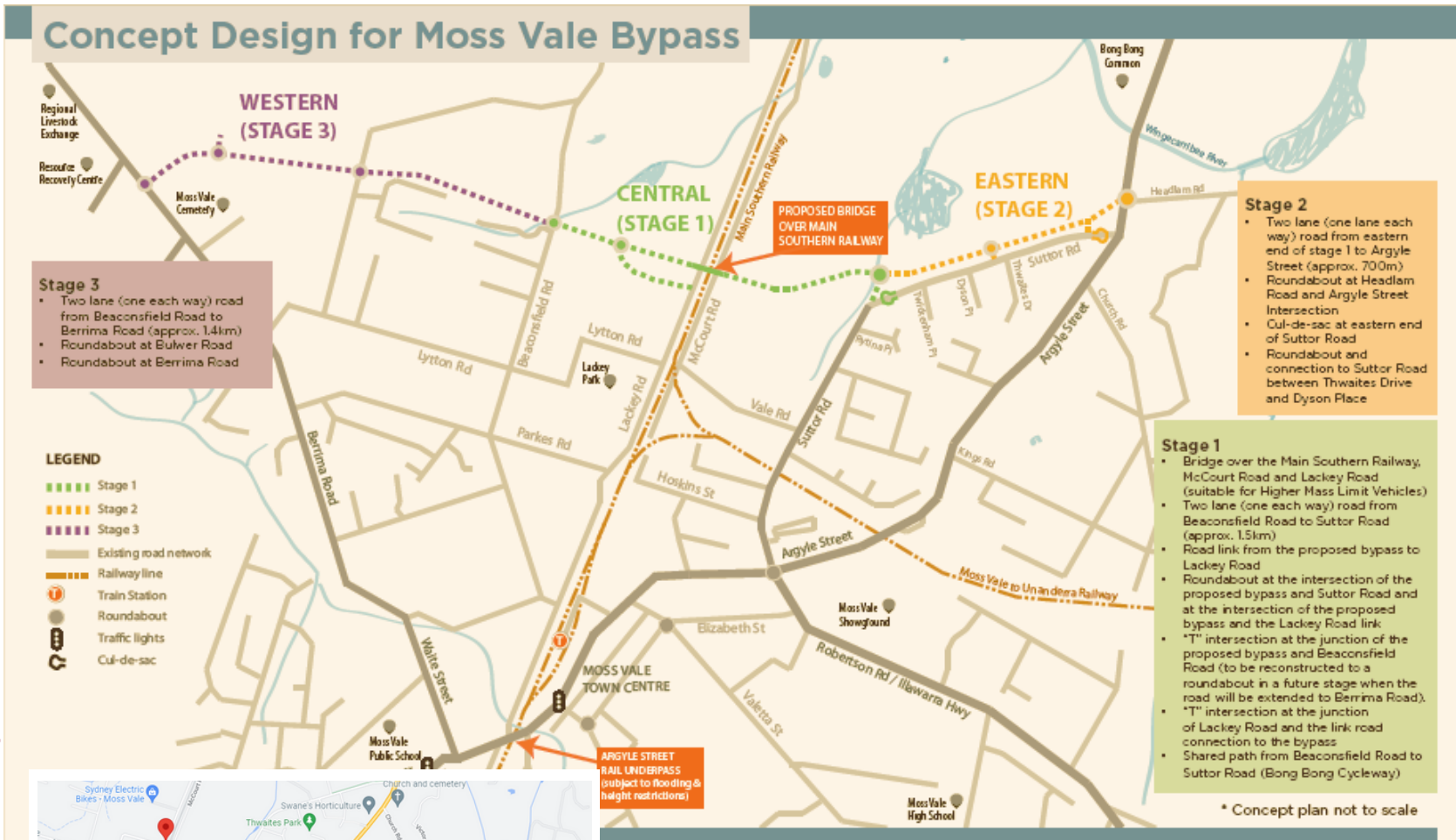
PROJECT BENEFITS

- Removes risks related to the current level crossing
- Congestion associated with level crossings serving freight type rail will be mitigated.
- Supports benefits resulting from the upcoming Moss Vale Bypass
- Provides a new preferred route for all north and south traffic from the Hume Highway needing to access the Southern Highlands.



LOCATION

Moss Vale By-Pass



2.2 Moss Vale Bypass

The Moss Vale Bypass is critical transport link across the north of Moss Vale. It provides a second link across the main southern railway line, which is not height restricted or subject to flooding.

This link will support a more equitable distribution of traffic across the transport network and will relieve congestion and delays on Argyle Street in Moss Vale Town Centre. The project is an initiative from Council's adopted LSPS and Moss Vale Enterprise Corridor Scheme Development Control Plan (DCP).

STATE: GOULBURN
FEDERAL: WHITLAM



FUNDING SOUGHT **\$197 MILLION**

TOTAL COST **\$197 MILLION**

DESCRIPTION

The project will include:

- the provision of a dual carriageway totalling a length of 3.2kms across northern Moss Vale
- a second crossing across the main southern railway line.
- bridging that will mitigate height restrictions and flooding risks.

Council has resolved to undertake the project in full, ie not in a staged manner. This is due to:

- cost efficiencies for the construction phase, including service relocations
- minimising the impacts of temporary connections works which will ultimately become redundant
- avoiding adverse traffic impacts on local roads resulting from the partial construction of the whole Moss Vale Bypass
- reducing the burden on the existing traffic network in lieu of providing temporary connections.

TIME FRAME

Detailed design is expected to be completed by November 2023. Following completion of detailed design, construction to commence once funding is secured.

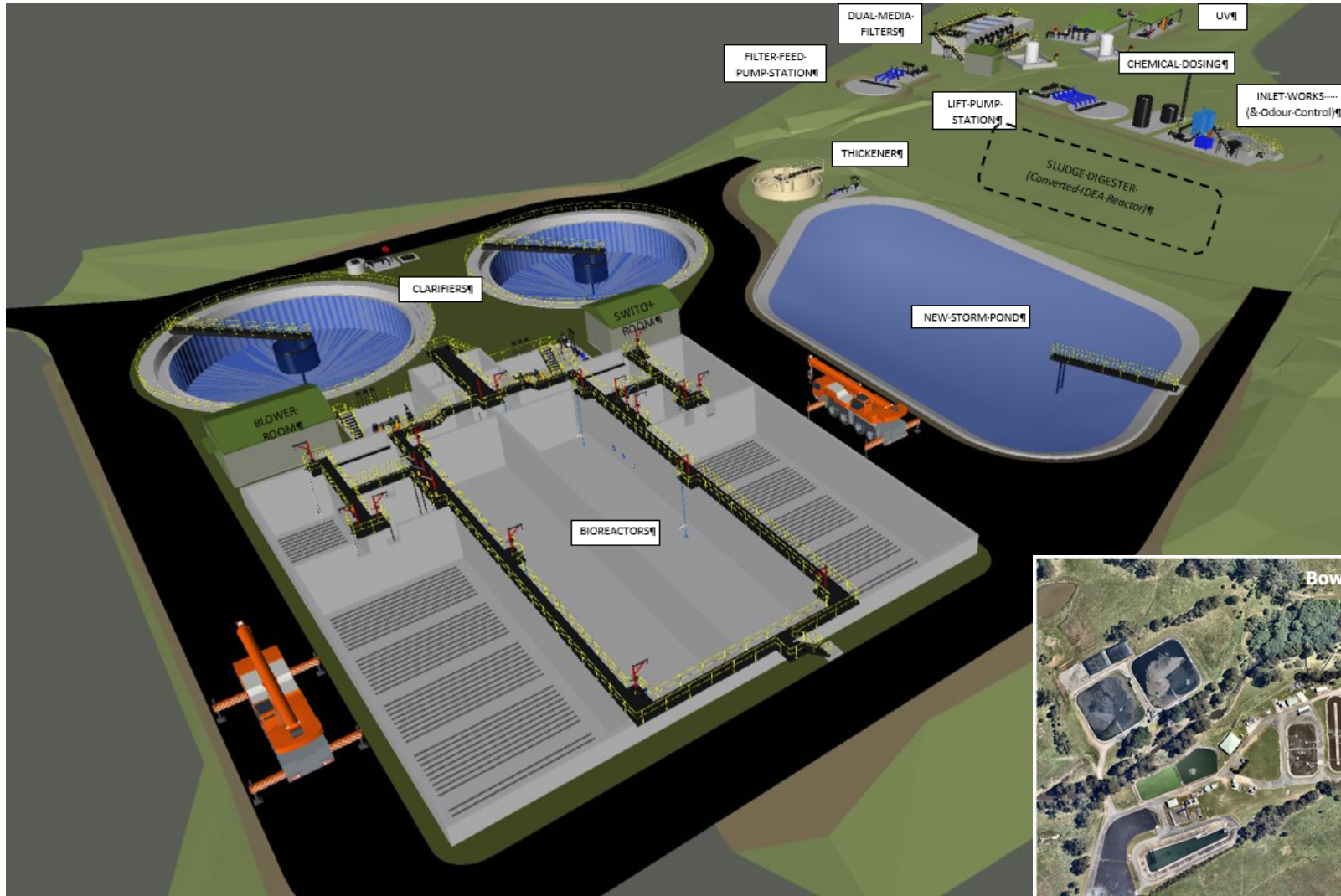
STATUS

Concept designs are complete and works have commenced on detailed design, which is anticipated November 2023.

PROJECT BENEFITS

- Improving traffic efficiency within the Town Centre of Moss Vale by providing an alternate route for long haul freighter traffic with traffic counts highlight a 25-30 % reduction in traffic counts
- Reducing volume of long-haul freight traffic along the A48 Illawarra Highway and Argyle Street within Moss Vale
- Improving pedestrian amenity and safety within Moss Vale town centre for road users and pedestrians by providing an alternate route to limit heavy vehicles and ease congestion
- Improving visual amenity of the town centre by reducing traffic
- A second rail crossing of the Main Southern Railway for Moss Vale which is not flood affected or height restricted
- Connecting the existing residential and industrial areas with the broader area
- Providing a new shared pedestrian/cycle path along the length of the bypass to tie into existing facilities including the Bong Bong Cycle Track to the east and the Berrima Road to the west
- Encouraging economic prosperity within the industrial region of Moss Vale by increasing access to industrial sites and developing faster haulage routes
- Providing a bypass for use by local residents to ease their movement through the Moss Vale region
- Improving response times for emergency service vehicles through the reduced congestion on the Illawarra Highway (Argyle Street), and through secure access provided by the project and in particular the second road bridge over the main southern railway line.
- Equitable distribution of traffic across the road network.

Bowral Sewerage Treatment Plant (STP)



3.1 Bowral Sewerage Treatment Plant (STP)



STATE: WOLLONDILLY
FEDERAL: WHITLAM

FUNDING SOUGHT **\$7.3 million**

TOTAL COST **\$56 million**

The Bowral STP is approaching capacity and needs to be upgraded to ensure regulatory compliance and cater for anticipated population.

The project is for the construction to of the new STP to increase the plant capacity and has been included as a priority project in Council's Strategic Asset Management Plan.

DESCRIPTION

Sewage generated within Bowral, East Bowral and Burradoo is transferred through a combination of gravity sewers and sewage pump stations to the Bowral Sewage Treatment Plant (STP).

Although the STP is operating well and the quality of the effluent discharged to the Wingecarribee River within its Environment Protection Licence, the plant is now operating at near its design capacity.

TIME FRAME

2 year construction following award of contract.

STATUS

Detailed design completed.

Tender for Construction Contract closed and submissions evaluated.

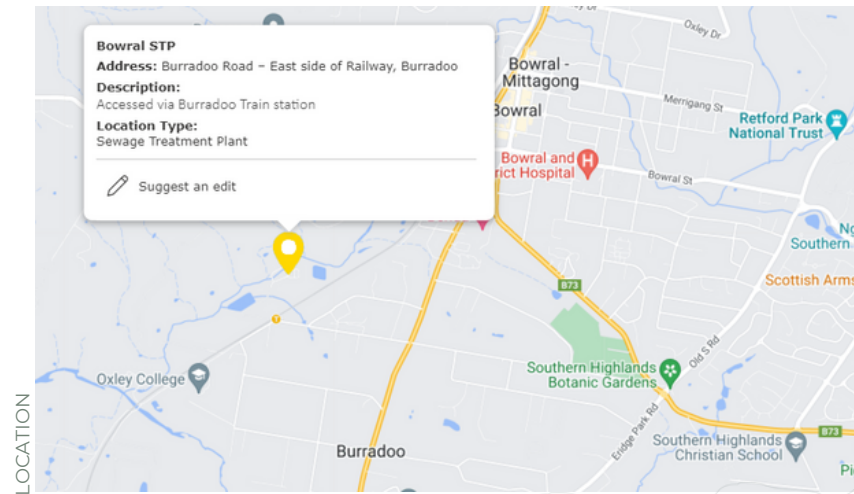
Tender prices received are over budget due to current overheated construction market, etc. currently negotiating.

Grant applied for \$7.3M under the Safe and Secure Water Program.

PROJECT BENEFITS

A further upgrade of the STP is required to:

- improve process and operational performance and risk management
- provide capacity to meet current and future population demands in the catchment
- provide treatment infrastructure to meet NSW EPA requirements
- protect the sensitive environment the STP discharges into which is part of the Sydney Drinking Water Catchment.
- protect the environment
- improve the level of service provision



LOCATION

Moss Vale Sewerage Treatment Plant (STP)



3.2 Moss Vale Sewerage Treatment Plant (STP)



STATE : WOLLONDILLY
FEDERAL: WHITLAM

FUNDING SOUGHT	\$25 million
TOTAL COST	\$55 million

The Moss Vale STP is approaching capacity and needs upgrading to ensure regulatory compliance and to meet anticipated population in line with the adopted Local Housing Strategy. This project has been included as a priority in Council's Strategic Asset Management Plan.

Although the STP is operating well and the quality of the effluent discharged to the Whites Creek within its Environment Protection Licence, the plant is now operating near capacity.

The design of the STP Upgrade has commenced.

To meet growth in the catchment for up to the year 2046, the STP will be designed in detailed to cater for an equivalent population of approximately 20,000EP.

The layout of the design will allow for future structures (and equipment) to cater for an ultimate equivalent population of approximately 35,000 EP.

DESCRIPTION

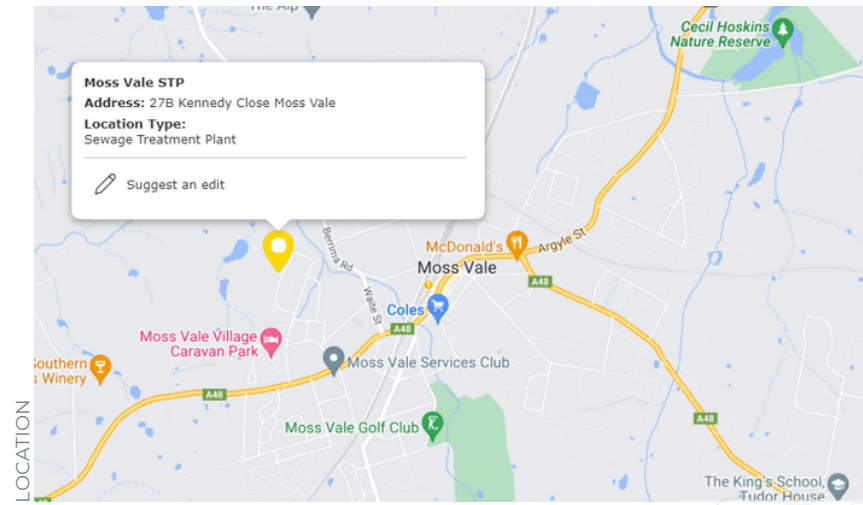
Commence approx. 1 year following the commencement of the Bowral STP Upgrade works and subject to securing construction funding.

TIME FRAME

Detailed Design is significantly completed, subject to learned improvements from the Bowral STP Upgrade tender final adjustments/amendments may be required. Grant applied under Accelerated Infrastructure Fund.

STATUS

- ### PROJECT BENEFITS
- provide treatment capacity to meet current and future population and industrial demands within the catchment
 - improve process and operational performance
 - provide treatment infrastructure to meet NSW EPA requirements
 - protect the sensitive environment the STP discharges into which is part of the Sydney Drinking Water Catchment



Mittagong Sewerage Treatment Plant (STP)



3.3 Mittagong Sewerage Treatment Plant (STP)

STATE: WOLLONDILLY
FEDERAL: WHITLAM



The project includes detailed design and construction to increase the plant capacity and included in Council's Strategic Asset Management Plan.

FUNDING SOUGHT	\$33 million
TOTAL COST	\$50+ million

DESCRIPTION

Although the Mittagong STP is operating well and the quality of the effluent discharged into Iron Mines Creek (which eventually flows into the Nattai River) is within its Environment Protection Licence, the plant is now operating at near its design capacity. A further upgrade of the STP is required to:

- provide treatment capacity to meet current and future population demands within the catchment
- Improve process and operational performance
- Provide treatment infrastructure to meet environmental objectives from the regulator - the NSW Environmental Protection Agency (EPA)
- Protect the sensitive environment the STP discharges into which is part of the Sydney Drinking Water Catchment.

To progress the project, Council has engaged a specialist consultant to undertake the detailed design and associated technical specification documentation for the proposed upgrade and augmentation of the Mittagong STP.

TIME FRAME

It is planned that Mittagong STP will be the third plant to be upgraded – following the upgrades of the Bowral STP and the Moss Vale STP. Progress to the construction tender phase is expected will be staggered approx. 1 year following the commencement of the Moss Vale STP Upgrade construction. Progress to the construction phase of the project may be subject to funding availability.

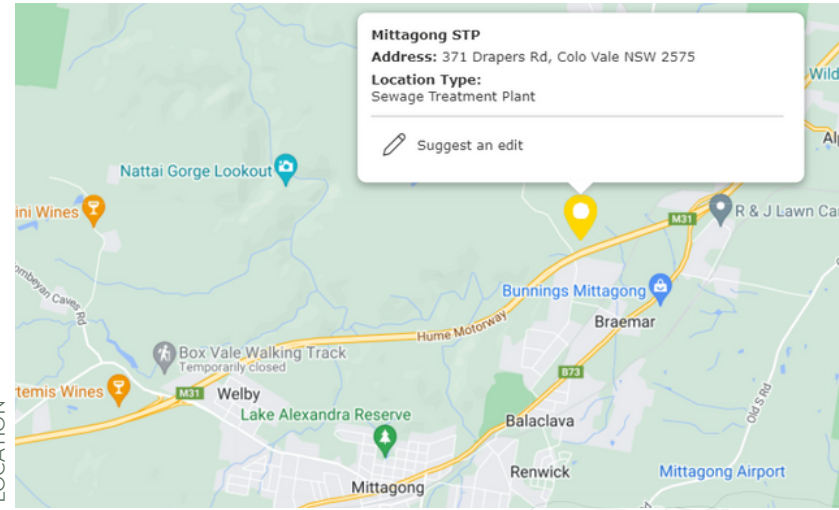
STATUS

Concept design has been completed and the detailed design phase is commencing.

PROJECT BENEFITS

- Increased the capacity to cater for projected catchment growth out to at least 2046
- Enables ability to accept tankered wastes generated within the LGA that are currently transferred to other WSC sites
- Increased wet weather storage and treatment capacity to reduce the frequency of emergency discharges to the adjoining Sheepwash Creek (and reduce potential environmental impacts).
- Addresses a range of identified operational shortfalls at the existing STP (including inlet works pumping, lack of grit removal and constrained biosolids dewatering).

LOCATION



Wingecarribee Water Treatment Plant
(WPT)



3.4 Wingecarribee Water Treatment Plant



STATE: GOULBURN
FEDERAL: WHITLAM

FEASIBILITY DESIGN AND ENABLING WORKS FUNDING SOUGHT \$4.5 Million

FEASIBILITY DESIGN AND ENABLING WORKS COST \$6 Million

The Wingecarribee Water Treatment Plant supplies approximately 90% of Wingecarribee Shire Councils water supply. Ensuring critical infrastructure is upgraded in a timely manner to ensure efficient use of natural resources. This has been identified as a project in Council's Strategic Asset Management Plan.

PROJECT BENEFITS

- Secure water supply that meets the drinking water guidelines and health standards
- Protect the environment
- Improve protection of Sydney Drinking Water Catchment
- Support future development including residential, commercial and industrial growth in Bowral
- Improve the level of service provision
- Provide economic benefit during construction
- Improve operating efficiency and risk management

DESCRIPTION

Once delivered, the feasibility study will seek improvements to mitigate the risk of poor-quality drinking water.

Process improvements and upgrades to the treatment plant are required to ensure effective management of water quality including, algae, manganese, backwash and run to waste facilities. The feasibility study will determine the priorities and schedule of works to be delivered over the coming years.

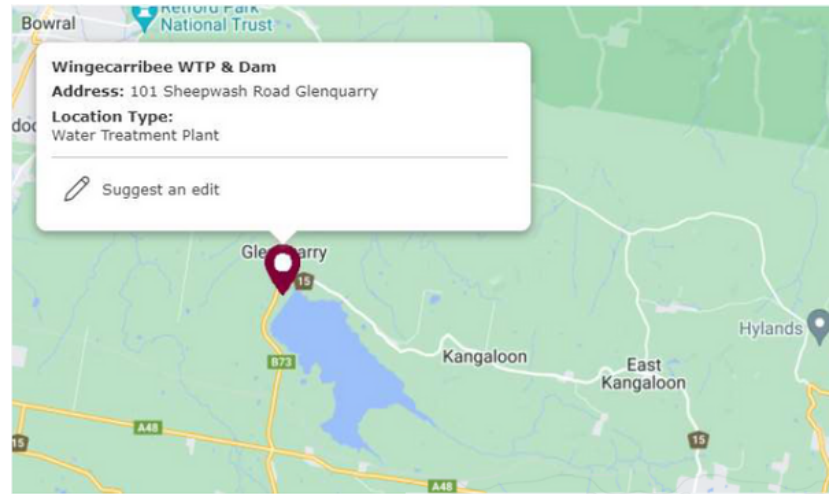
TIME FRAME

The implementation of improvements will not commence until the 2023/24 financial year and dependant on available funding.

STATUS

Currently unfunded and subject to feasibility study

LOCATION



**AGENDA OF THE EXTRAORDINARY MEETING OF COUNCIL
WEDNESDAY 10 MAY 2023**

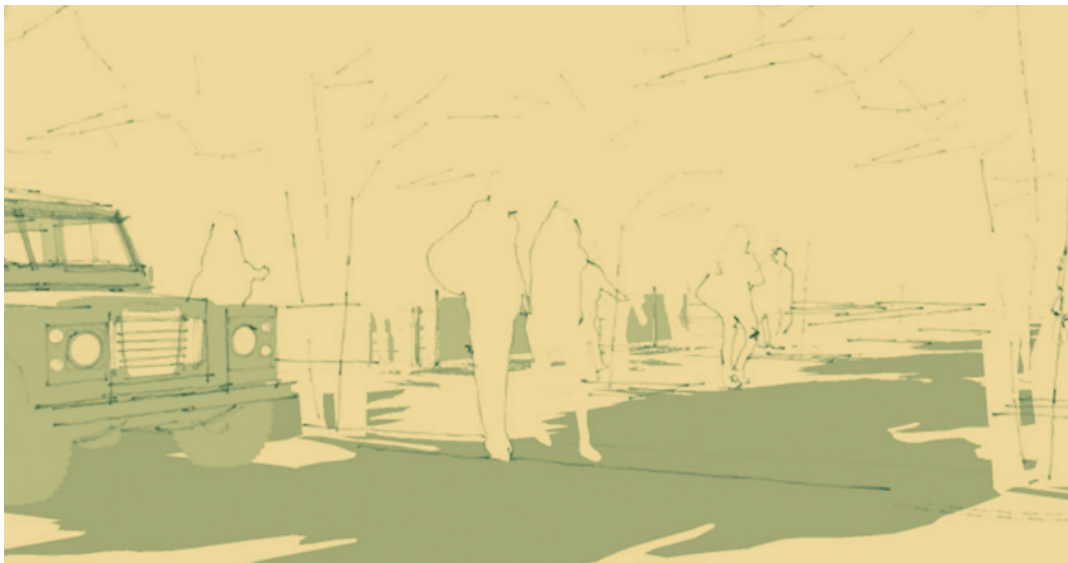


Planning for a sustainable future:

A major review of Council's strategic planning framework and program of priority planning projects to address the shortcomings in the existing planning framework.

Council has commenced work on several critical strategic and infrastructure planning projects. This work has included commissioning the Integrated Transport Strategy, Community and Recreational Facility Strategy, Bowral Town Centre Master Plan, review of Medium Density Housing Controls and a review of Housing Controls to provide a streamlined approval process.

Council is seeking the support of the Government to fast track this program and develop a strong strategic planning framework for the Shire.



BENEFITS

- Addresses critical issues for the Shire and broader region
- Unlocks regionally significant employment lands
- Supports economic development
- Increases regional housing supply to meet the changing needs of our community
- Enables a proactive strategic approach
- Provides certainty and confidence to landowners and investors.

FUNDING SOUGHT

A significant investment of approximately \$1.4M is required. The investment will support local and regional economic development, regional housing supply and enable the release of regionally significant employment lands. Following is a breakdown of the key projects.

**New Living Master Plan and Servicing
Strategy: Mittagong East Study Area**



4.1 New Living Master Plan and Service Strategy: Mittagong East Study



STATE: WOLLONDILLY
FEDERAL: WHITLAM

Council has adopted the Local Strategic Planning Statement and Local Housing Strategy which requires a Master Plan and Service Strategy to be adopted prior to any rezonings in the area.

FUNDING SOUGHT	\$300,000
TOTAL COST OF FEASIBILITY STUDY	\$300,000

PROJECT BENEFITS

- land release will be expedited in the new living areas
- ensure that new communities are well planned and supported by essential infrastructure.

DESCRIPTION

The Local Housing Strategy requires key planning processes prior to the land being rezoned, to ensure that new development areas are well planned and designed and supported by essential infrastructure.

This includes the development of a Master Plan and Infrastructure Servicing Strategy for the New Living Area, to deliver positive design outcomes, provide greater certainty to the community, industry and Council, reduce development costs and ensure that infrastructure is delivered in a well-planned and efficient way.

TIME FRAME

Once the grant is received, it will take 12 months to complete the study

STATUS

Currently unfunded

LOCATION



Wingecarribee Employment Lands Review

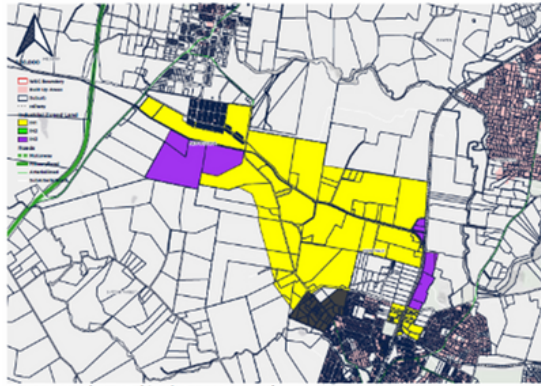


Figure 1: Southern Highlands Innovation Park

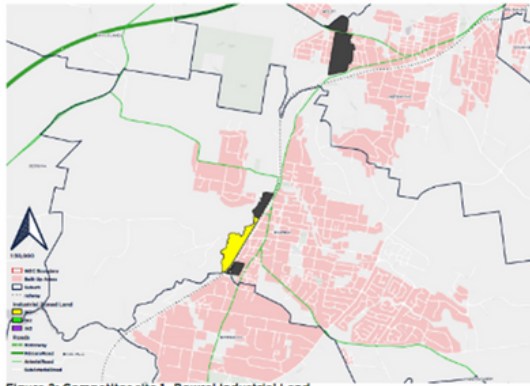


Figure 2: Competitor site 1- Bowral Industrial Land

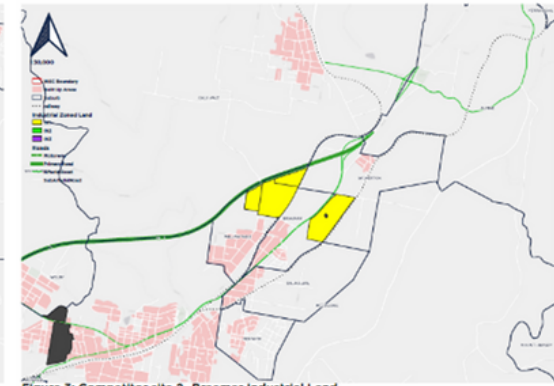


Figure 3: Competitor site 2- Braemar Industrial Land

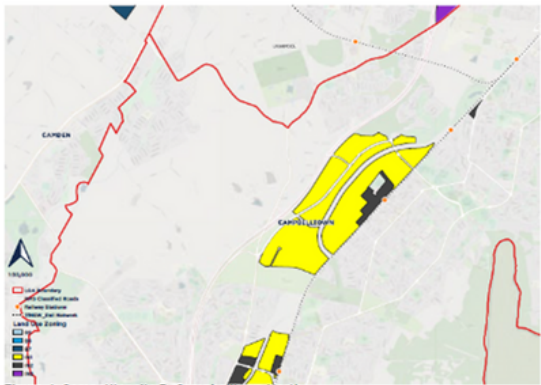


Figure 4: Competitor site 3- Campbelltown North

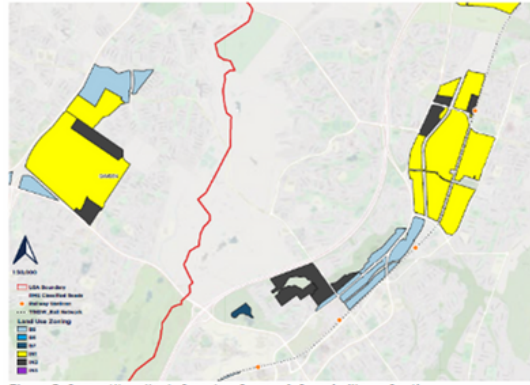


Figure 5: Competitor site 4- Smeaton Grange & Campbelltown South

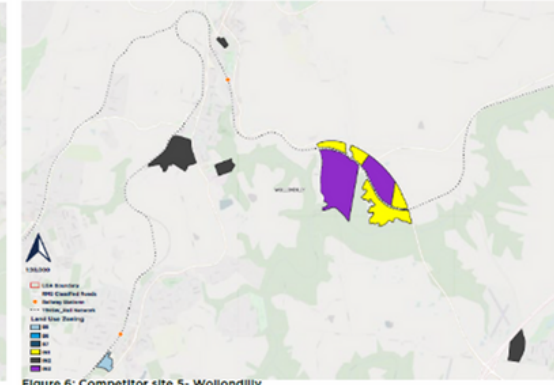


Figure 6: Competitor site 5- Wollondilly

4.2 Wingecarribee Employment Lands Review



STATE: WOLLONDILLY / GOULBURN
FEDERAL: HUME / WHITLAM

Wingecarribee Shire Council is committed to supporting a productive economy by enabling business and jobs in the locations where they are needed and delivering on the vision for an area outlined with local and state strategic plans including Council's Local Strategic Planning Statement.

FUNDING SOUGHT	\$150,000
TOTAL COST	\$150,000

The Review will provide an overview of the issues and opportunities associated with employment land and a detailed analysis of growth influencers, current supply and capacity, and the projection of future floorspace/land requirements to support growth in employment and capitalise on Wingecarribee's strategic location.

The Review will make specific recommendations on changes to the planning framework to support both local and regional economic development.

DESCRIPTION

Delivery of project will be completed within 12 months of funds being received.

TIME FRAME

Currently unfunded.

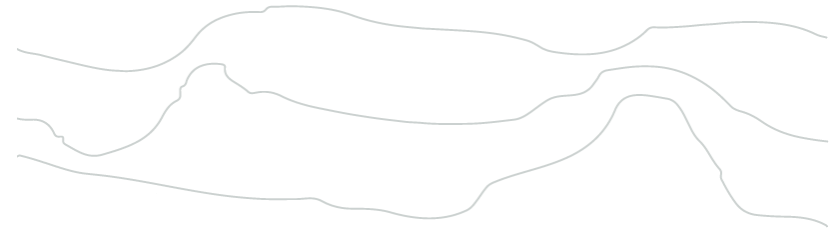
STATUS

PROJECT BENEFITS

- An evidence based study that will inform decision making around the LEP
- Inform a best practice framework to ensure that economic development within the Shire can reach its full potential
- Make it easier for business to operate within the Shire.



LOCATION



**Town Centre Master Plans –
Mittagong and Moss Vale**



Moss Vale



Mittagong

4.3 Town Centre Master Plans: Mittagong and Moss Vale

STATE: WOLLONDILLY
FEDERAL: WHITLAM



Council has commissioned the Bowral Town Centre Master Plan and is committed to developing Master Plans for its other main centres of Mittagong and Moss Vale enabled by Council's adopted LSPS.

The Feasibility Study will ensure that our region has sufficient infrastructure in place to allow community growth

FUNDING SOUGHT **\$360,000**

FEASIBILITY STUDY TOTAL COST **\$360,000**

DESCRIPTION

Mittagong and Moss Vale each have a unique character and identity, but collectively form the economic, cultural and social heart of the Wingecarribee Shire. The three centres play an important economic function for the Shire, as well as being one of the closest 'lifestyle' centres from the new Western Sydney Aerropolis.

TIME FRAME

Moss Vale and Mittagong Town Centre Plans can be completed within 12 months of receiving funds

STATUS

Currently unfunded

PROJECT BENEFITS

- provides a clear vision and strategic direction for each Town Centre
- acts as a catalyst for new development
- supports the revitalisation of these strategic centres
- enhances and builds on the unique character of each Town Centre

LOCATION

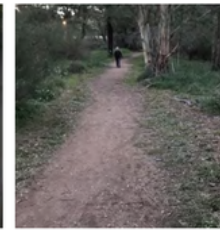


**AGENDA OF THE EXTRAORDINARY MEETING OF COUNCIL
WEDNESDAY 10 MAY 2023**

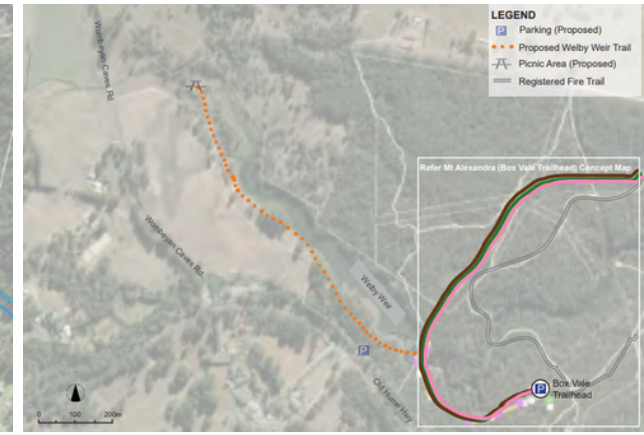
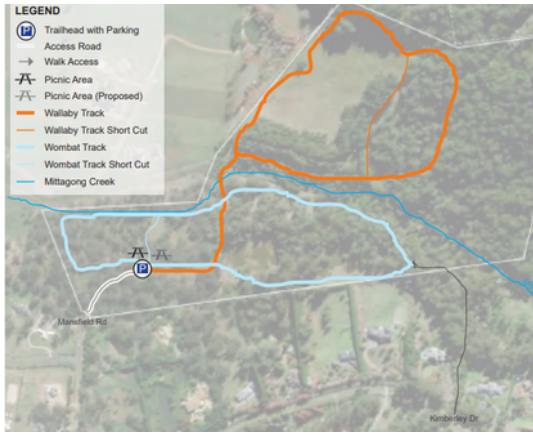
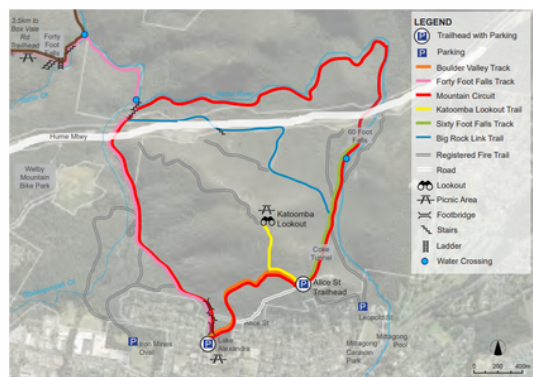
Walking Track Strategy



MT ALEXANDRA RESERVE (LAKE ALEXANDRA TRAILHEAD)



CONCEPT PLAN



5.1 Walking Track Strategy

The Walking Tracks Strategy is to provide a framework for the management, enhancement and on-going maintenance of recreational walking tracks on Council owned or managed land within the Wingecarribee Shire. It also identifies a cohesive track network that offers active and challenging recreational experiences encompassing the Shire's diverse and distinctive landscapes.

STATE: GOULBURN / WOLLONDILLY
FEDERAL: WHITLAM



FUNDING SOUGHT \$6 million
TOTAL COST \$6 million

TIME FRAME DESCRIPTION

The Strategy provides guidance on the walking tracks at 16 Council owned or managed bushland reserve. In the strategy upgrades and improvements to each area's scope of works can include:

- walking track upgrades
- new bridges
- upgraded amenities including new all abilities toilet facility
- upgrade heritage picnic shelters,
- new all abilities toilet,
- new seating,
- new directional and interpretive signs,
- new furniture,
- upgrade path to lookout
- upgrade carpark

Once funding is secured upgrades across the reserves can be programed and staged.

PROJECT BENEFITS

A network of well-planned, clearly defined and authorised recreational tracks will

- Provide greater accessibility to the whole community
- Offer outdoor recreational activity that can improve physical and mental well-being
- Encourage regulated access to natural and cultural areas which can increase passive surveillance and help mitigate unauthorised activities
- Allow reserve access for key groups for activities such as weed management, trail maintenance, fire protection (i.e. Bushcare, NSWRFs, FRNSW)

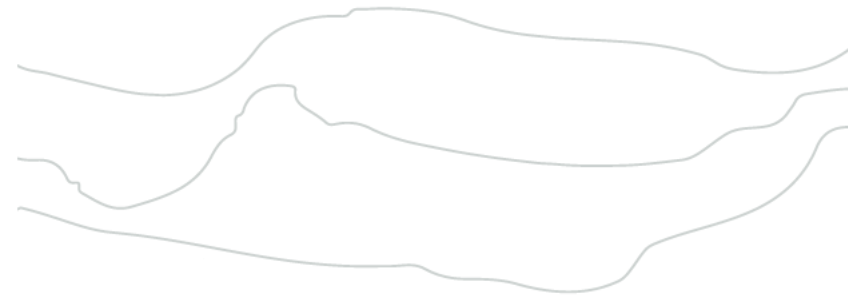


- 1 Mount Alexandra Reserve
- 2 Lake Alexandra Reserve
- 3 Iron Mines Oval Reserve
- 4 Welby Weir
- 5 Gibbergunyah Reserve
- 6 Mount Gibraltar Reserve
- 7 Hammock Hill Reserve
- 8 Mansfield Reserve
- 9 River Bend Reserve
- 10 Berrima River Reserve
- 11 Stone Quarry Walk
- 12 Berrima Weir Reserve
- 13 Bong Bong Common (link to Cecil Hoskins)
- 14 Glow Worm Glen William Street Reserve
- 15 Garland St Reserve
- 16 Governors Road Boardwalk (Road Reserve)

Southern Villages Iconic Trail (SVIT)



Pathways and cycleways supporting active transport not only supports connectivity but also health and safety of pedestrians and cyclists



5.2 Southern Villages Iconic Trail (SVIT)

STATE: GOULBURN
FEDERAL: WHITLAM



The SVIT will be a mixed-use trail (for runners, walkers and mountain bikers) that would link Wingello, Penrose, Bundanoon and Exeter through to Fitzroy Falls and - ultimately - Kangaroo Valley which will provide over 80km of track.

FUNDING SOUGHT	\$20 million
PROJECT ESTIMATE	\$20 million

This has the potential to be a world class drawcard with huge tourism benefits, providing opportunities for both existing businesses and new endeavours. Beyond that though, the SVIT would be a great piece of recreational infrastructure for locals, giving a new way to experience the natural wonders that surround us.

Phase 1 of the project includes:

- Feasibility study which is complete
- Proposed trail layout (including detailed trail alignment and mapping)
- Estimated costs of implementation
- Economic benefits assessment showing a benefit to the local economy of \$9-10 million per annum
- Approval pathways, including land-access arrangements Project risks
- Identification of funding sources
- Roadmap, agreed to by various stakeholders, for construction of the SVIT

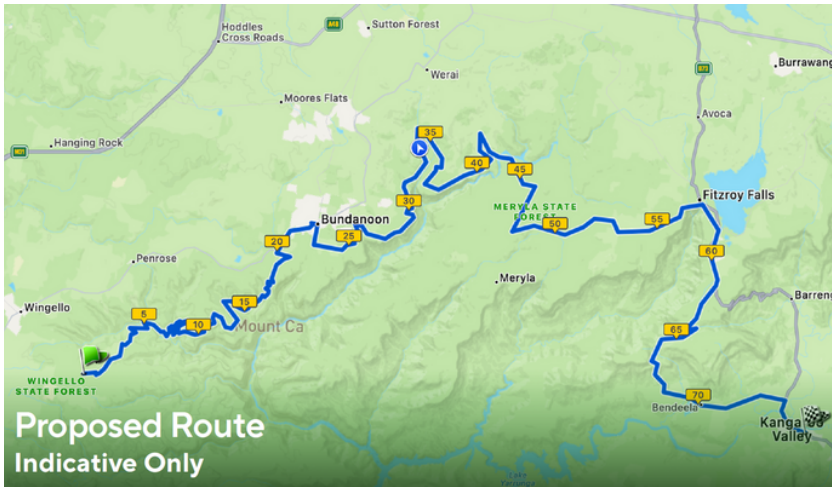
- ### PROJECT BENEFITS
- Provides a world class mountain bike trail to local riders
 - Allows locals to fully immerse themselves in the beauty of our nearby national park
 - Develops an appreciation within the community of the history and cultural significance of the area
 - Creates new revenue streams for existing businesses
 - Provides opportunities for new businesses
 - Supports eco/nature-based tourism experiences

DESCRIPTION
TIME FRAME
STATUS

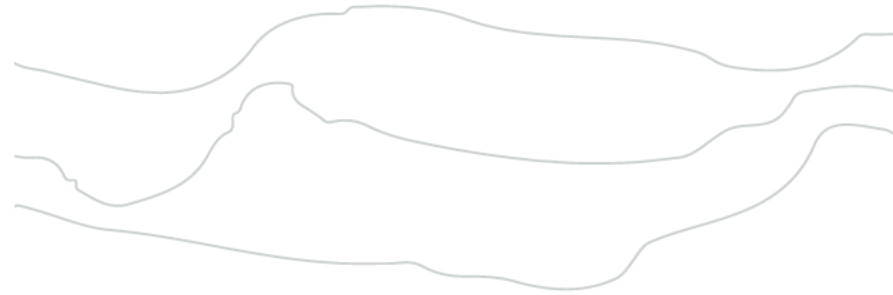
Stage 1 Feasibility Study complete
Stage 2 Subject to securing funding.

Stage 1 - Feasibility Study Complete, 16km from Bundanoon to Exeter has been identified
Stage 2 Subject to securing funding.

LOCATION



Playspace Strategy



5.3 Playspace Strategy

This strategy sets out an approach to the future provision of playspaces across the Shire. Play is fundamental in children's development and therefore considered a priority for council.

A playspace with high play values would include the following attributes: • enticing play • loose/moveable parts • challenging play • natural elements and/or access to nature • cater for a range of ages and abilities • socialising opportunities • movement and imaginative play • space for ball games.

Funding received would be prioritised across the Shire.
Examples of use would be:

Robertson Youth Play - \$650,000
Build new pump track, skate park and half court, in response to community feedback during Community and Recreational Facilities Strategy consultation.

Exeter Oval, Exeter - \$800,000
Review location of existing play space adjacent to tennis courts, install new level 1 play space including shade structure, path access and tree planting.

Welby Oval, Welby - \$400,000
replace existing play equipment next to cricket nets and playing field with new level 2 play space, consistent with ECP guidelines, include shade structure over part of the equipment, path access and tree planting

Jurd Park, Colo Vale - \$400,000
Replace existing play equipment next to tennis courts and baseball field with new level 2 play space, consistent with ECP guidelines, include shade structure over part of the equipment, path access and tree planting

DESCRIPTION

STATUS

A number of Play Space projects are progressively being implemented but further funding is required to complete the outcomes of the strategy.

STATE: GOULBURN
FEDERAL: WHITLAM

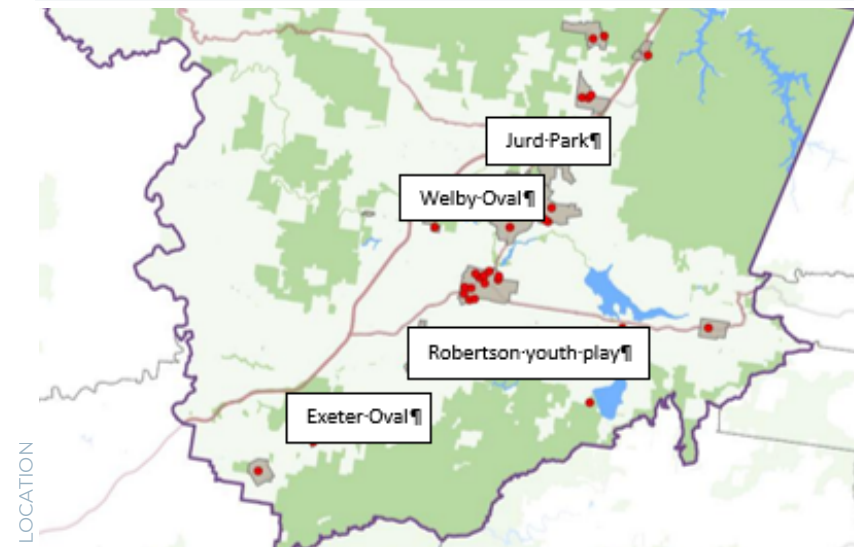


FUNDING SOUGHT \$12 million+

PROJECTED COST \$12 million+

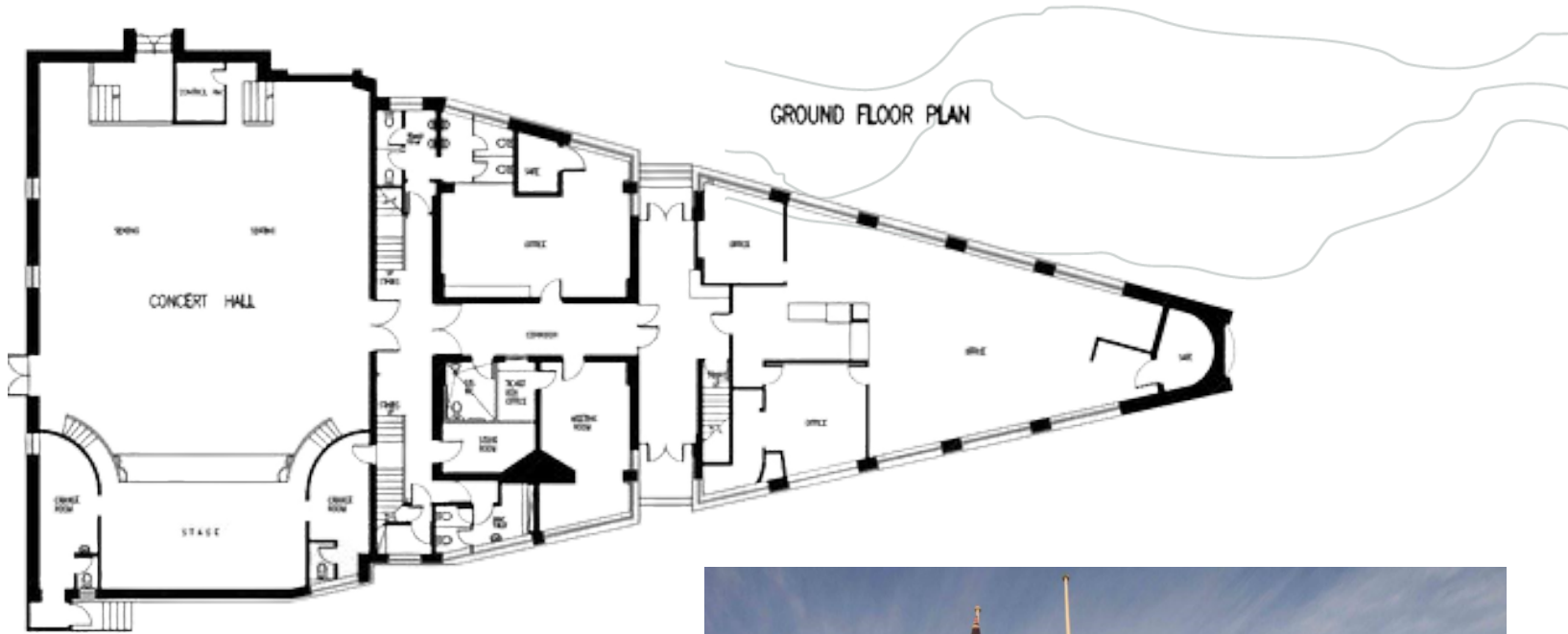
PROJECT BENEFITS

- Exposure to nature and greenery makes people healthier
- Parks, recreational facilities and open spaces produce important social and community development benefits and provide opportunity for social interaction
- Access to public parks and recreational facilities has been strongly linked to reductions in crime and, to reduced crime amongst young people
- Green spaces that offer a balance of diversity, distinctiveness, popularity, attractiveness and comfort, facilitate more positive outcomes



**AGENDA OF THE EXTRAORDINARY MEETING OF COUNCIL
WEDNESDAY 10 MAY 2023**

Mittagong PLAYHOUSE



5.4 Mittagong Playhouse

The Mittagong Playhouse is a heritage building of significant cultural importance to the Southern Highlands community.

The Playhouse is used by the local historical society, local theatrical companies and numerous other community groups and schools. In 2019, serious structural faults in the building were discovered, forcing its closure.

This project includes complete structural repair and refurbishment of The Playhouse so that the building can be reopened to the public and the many community and cultural groups that call the Playhouse home.

STATE: WOLLONDILLY
FEDERAL: WHITLAM



FUNDING SOUGHT **\$7.5 million**
TOTAL COST **\$7.5 million**

DESCRIPTION

The Project includes

- providing access to enable people of all abilities to enjoy the space
- addressing fire and safety non-compliance issues
- removal of asbestos
- structural upgrades
- upgrade of AV facilities
- new fit out of the building

PROJECT BENEFITS

- supports the creative economy and cultural opportunities available in the Southern Highlands
- enhances the cultural life in the region and encourage the growth of creative activities, including increased engagement for young people
- improves accessibility through the provision of a lift
- community and key stakeholders have strong engagement in the design.

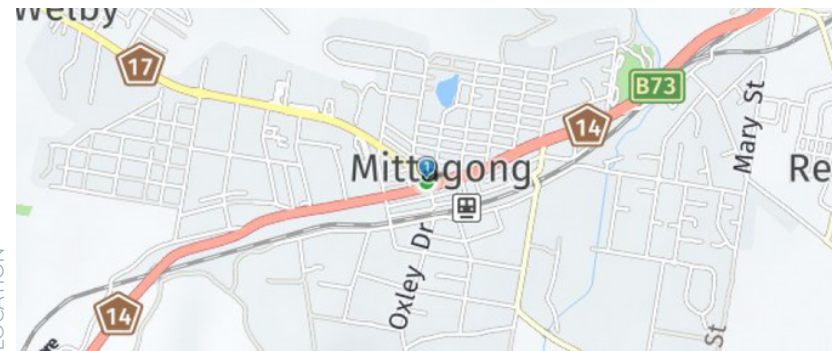
TIME FRAME

Once the DA is approved and finalised.
Construction ready 4 -6 weeks after DA tender ready package.
Construction is subject to tendering of contract

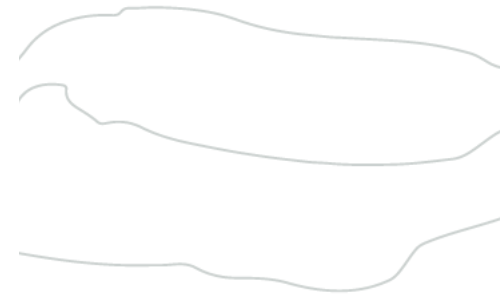
STATUS

Currently unfunded

LOCATION



Feasibility Study for Regional
Performing Arts Centre



Example Image - Source: Tamworth Regional Council

5.5 Feasibility Study for Regional Performing Arts Centre

The proposal aims to address the great lack of substantial cultural infrastructure in the Shire. The small arts venues that do exist are restricted by size and do not have the required facilities to accommodate touring shows or present programs of any size. This results in a significant lack of access to rich and diverse cultural experiences for the local community.

The business case is critical to understand the project scope and viability and to facilitate informed investment decisions and provide greater certainty on the investment as outlined in the Southern Highlands Inspired! Arts and Culture Strategic Plan.

The Wingecarribee Shire currently has no publicly accessible facility to adequately house cultural performances or conference attendances of more than 300 patrons. It has become apparent that the local and regional economy risks missing opportunities to stage major cultural programs by both local amateur community and touring professional performance artists due to this lack of a fully functional professional facility to stage such events and make them economically viable to both promoters, community groups and the ancillary businesses and service providers of the local economy.

At this stage Wingecarribee Shire Council proposes to conduct a feasibility study into the viability of just such a project.

DESCRIPTION

TIME FRAME

STATUS

12 months to undertake once funding secured.

Currently unfunded

STATE: GOULBURN / WOLLONDILLY
FEDERAL: HUME / WHITLAM



FUNDING SOUGHT	\$135,000
FEASIBILITY STUDY TOTAL COST	\$135,000

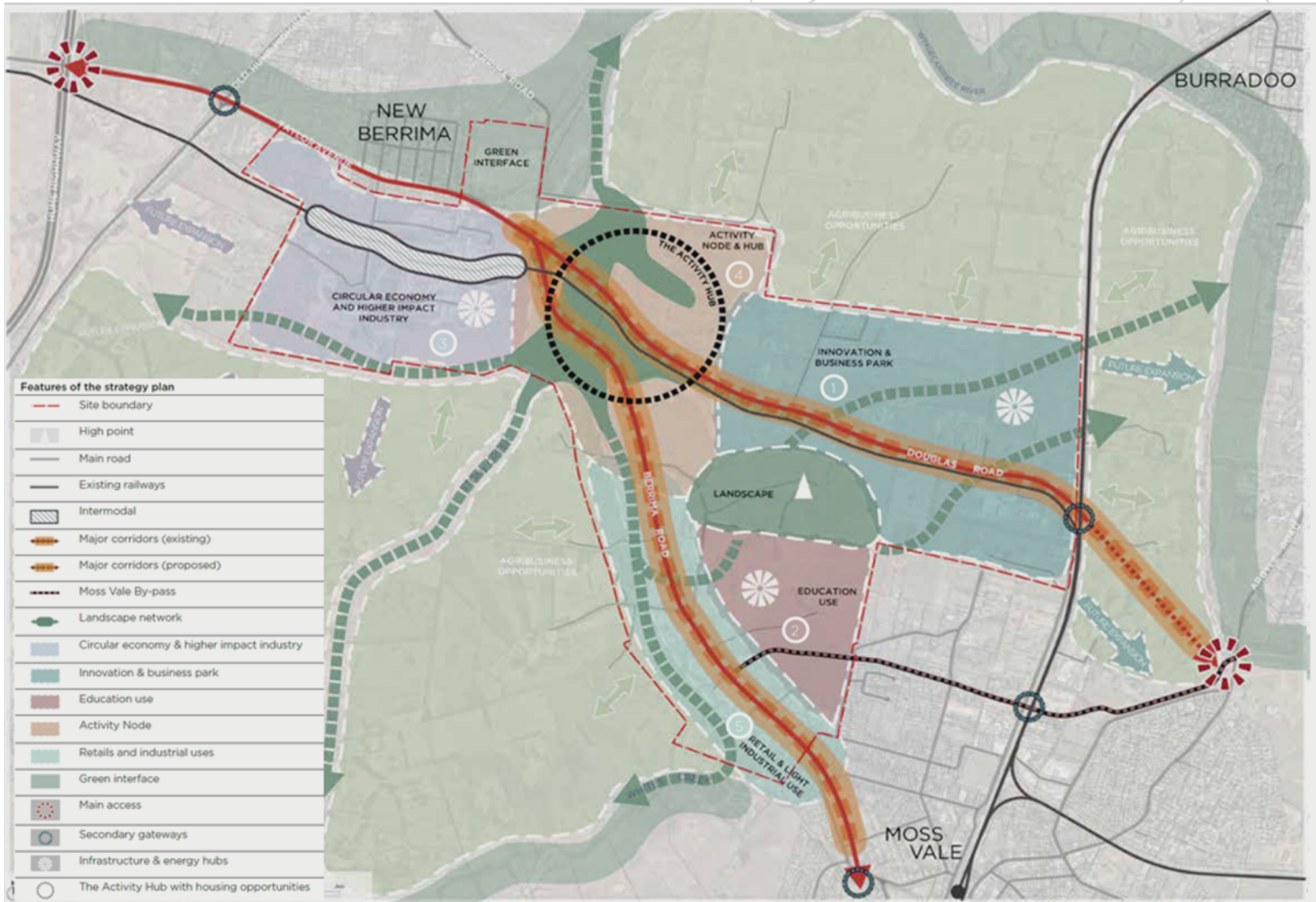
PROJECT BENEFITS

- The project is expected to deliver benefits for the region, as there is no facility in the region that can provide adequate space or facilities for most of the shows on tour around Australia, consequently, residents travel significant distances to Canberra, Wollongong, Goulburn, Sydney and Western Sydney to access the larger offerings of touring companies.
- The operational phase of this project will also deliver significant opportunities to local suppliers as well as create a number of direct and indirect jobs

LOCATION



Southern Highlands Innovation Park (SHIP)



6.1 Southern Highlands Innovation Park (SHIP)

STATE: GOULBURN
FEDERAL: WHITLAM



The Southern Highlands Innovation Park (SHIP) is a regionally significant employment precinct comprising some 1,023 hectares of industrial zoned land between Moss Vale and New Berrima, identified in Council's adopted LSPS.

The precinct is strategically located within proximity to Sydney, Canberra, Wollongong and the new Western Sydney Airport and Aerotropolis, and provides a unique opportunity to attract sustainable and innovative industries and become a major employer and economic driver for the Shire and the broader region.

FUNDING SOUGHT	\$330,000
TOTAL COST	\$600,000

Council has recently commenced work on a Master Plan and Infrastructure Servicing Strategy for the SHIP, which will provide a vision and strategic direction for the Park and certainty to both industry and Government in the provision of key enabling infrastructure to unlock the development potential of the SHIP.

The first stage of the process has been funded and completed by Council. A draft vision has been developed and includes:

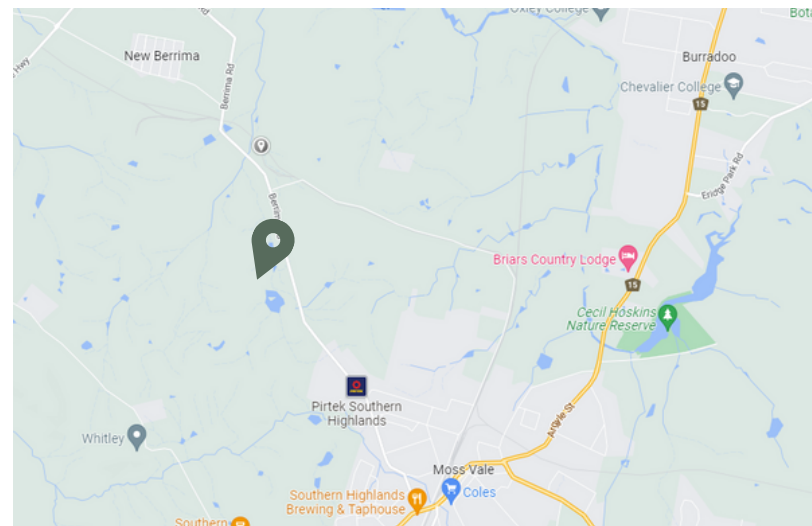
- a high-level land use and competitor analysis and feasibility model, to ensure that the Master Plan capitalizes on the Shire's competitive and comparative advantages to recognize the potential of the precinct
- a detailed Master Plan
- servicing Strategy and viability analysis
- detailed funding, governance
- delivery strategies to provide certainty to both industry and Government in the delivery of key enabling infrastructure to unlock this regionally significant employment precinct.

Funding has been secured for the masterplan with additional funding sought for the servicing strategy.

The Masterplan is currently out for tender.

PROJECT BENEFITS

- Delivers new jobs and economic benefits to the Region over a 15 year period
- Provides a strategic location between Sydney and Canberra for innovative green industries



STATUS TIME FRAME DESCRIPTION

LOCATION

Loop Line Platform



6.2 Loop Line Platform

The Loop Line Platform project aims to further recognise and celebrate the Human Endeavour Monument and create a viewing platform that will accommodate public viewing opportunities for trains travelling along the historic Picton-Mittagong Loop Line.

The existing carpark on Wilson Drive between Hilltop and Balmoral will be formalised and upgraded as part of the project scope.



STATE: WOLLONDILLY
FEDERAL: HUME

FUNDING SOUGHT \$5 million

TOTAL COST \$5 million

The Loop Line Platform project aims to:

- further recognise and celebrate the Human Endeavour Monument by formalising and landscaping around the monument.
- the creation of the viewing platform that will accommodate public viewing opportunities for trainspotting
- formalise and upgrade the existing carpark on Wilson Drive between Hilltop and Balmoral

DESCRIPTION

Key considerations of the design will be visitor experience especially pedestrian connectivity between the elements and consultation with a number of stakeholders including Community Associations, Transport Heritage NSW and Transport Asset Holding Entity (TAHE).

TIME FRAME

The detailed design of the carpark and concept designs of the viewing platform is expected to be finalised in the 22/23 FY.

The detailed structural design of the viewing platform and construction of the overall project is pending future funding opportunities.

STATUS

The design phase is currently underway and is expected to be finalised in the 22/23 FY.

Full Funding required

PROJECT BENEFITS

Project benefits include;

- Improved traffic and pedestrian safety.
- Further celebrating and commemorating the achievements of the workers in creating the Big Hill Cutting.
- Increased tourism opportunities.

LOCATION

