

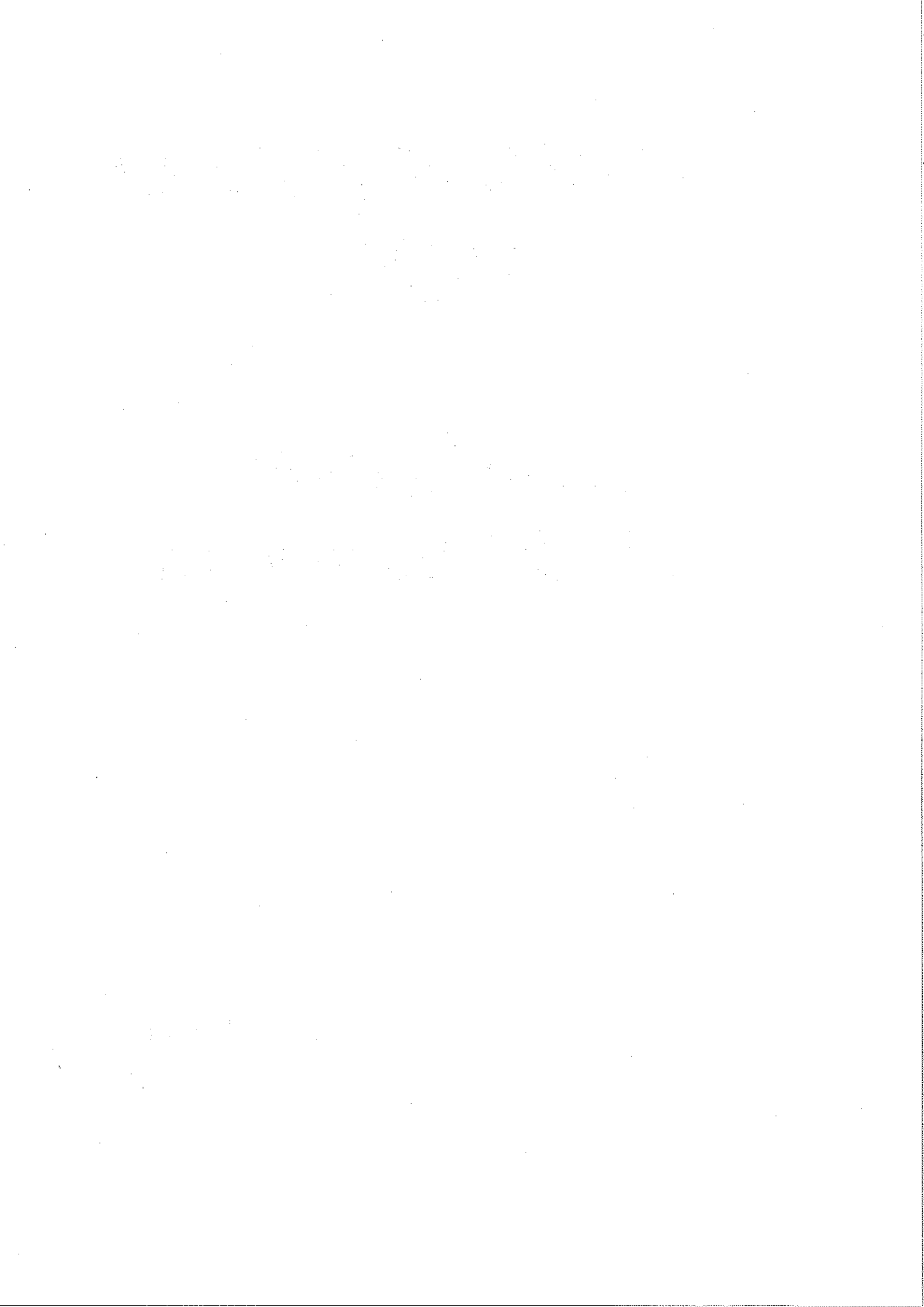
SHIRE OF WINGECARRIBEE



PROFESSIONAL CONSULTING ROOMS

DEVELOPMENT CONTROL PLAN NO.21

\$4.15 inc GST







WINGECARRIBEE SHIRE COUNCIL

WINGECARRIBEE DEVELOPMENT CONTROL PLAN NO. 21

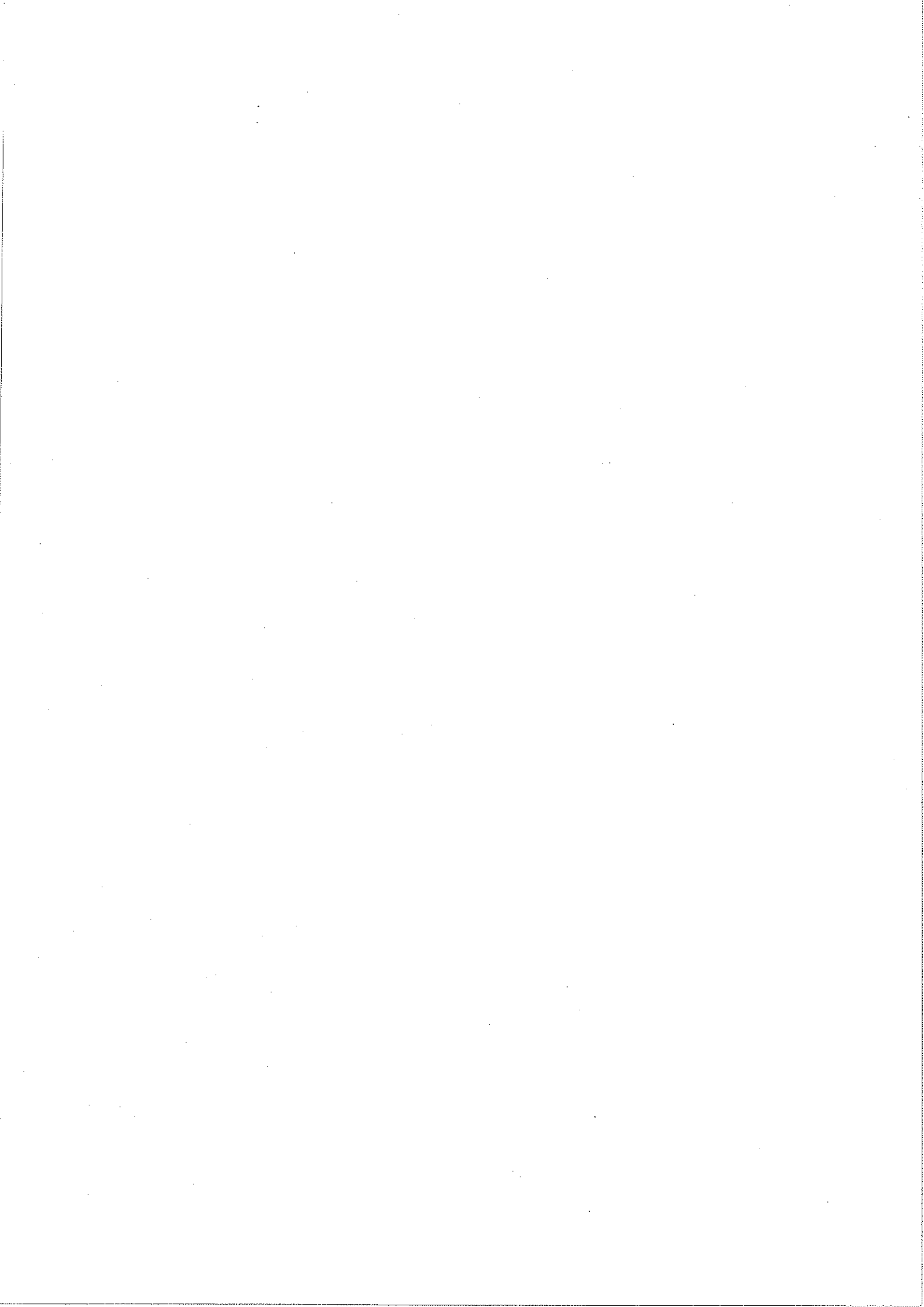
**P R O F E S S I O N A L C O N S U L T I N G
R O O M S**

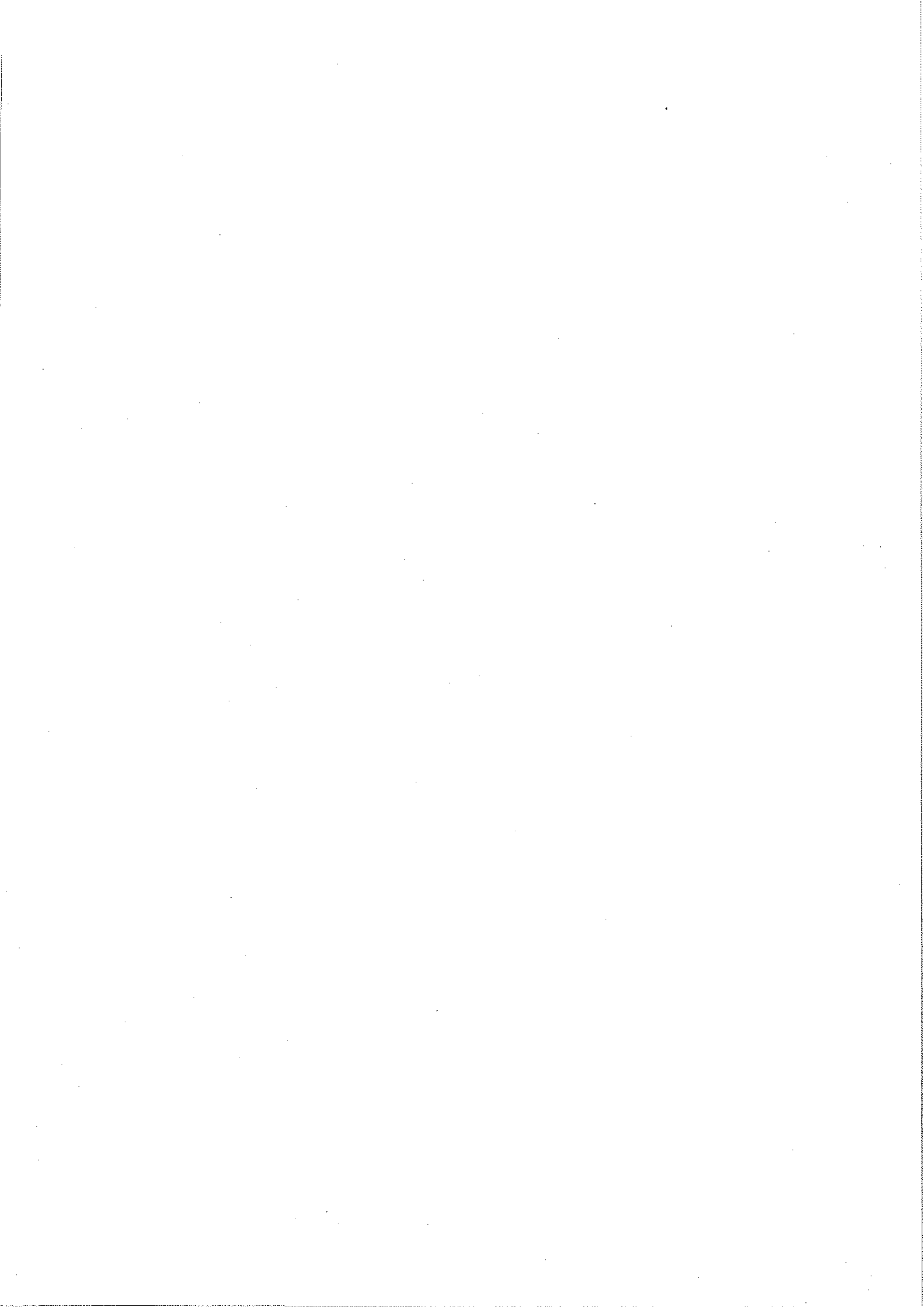
**Prepared in accordance with Section 72
of the Environmental Planning & Assessment Act, 1979**

Date of Adoption: 19 February 1990

**This Development Control Plan
became effective on: 21 February 1990**



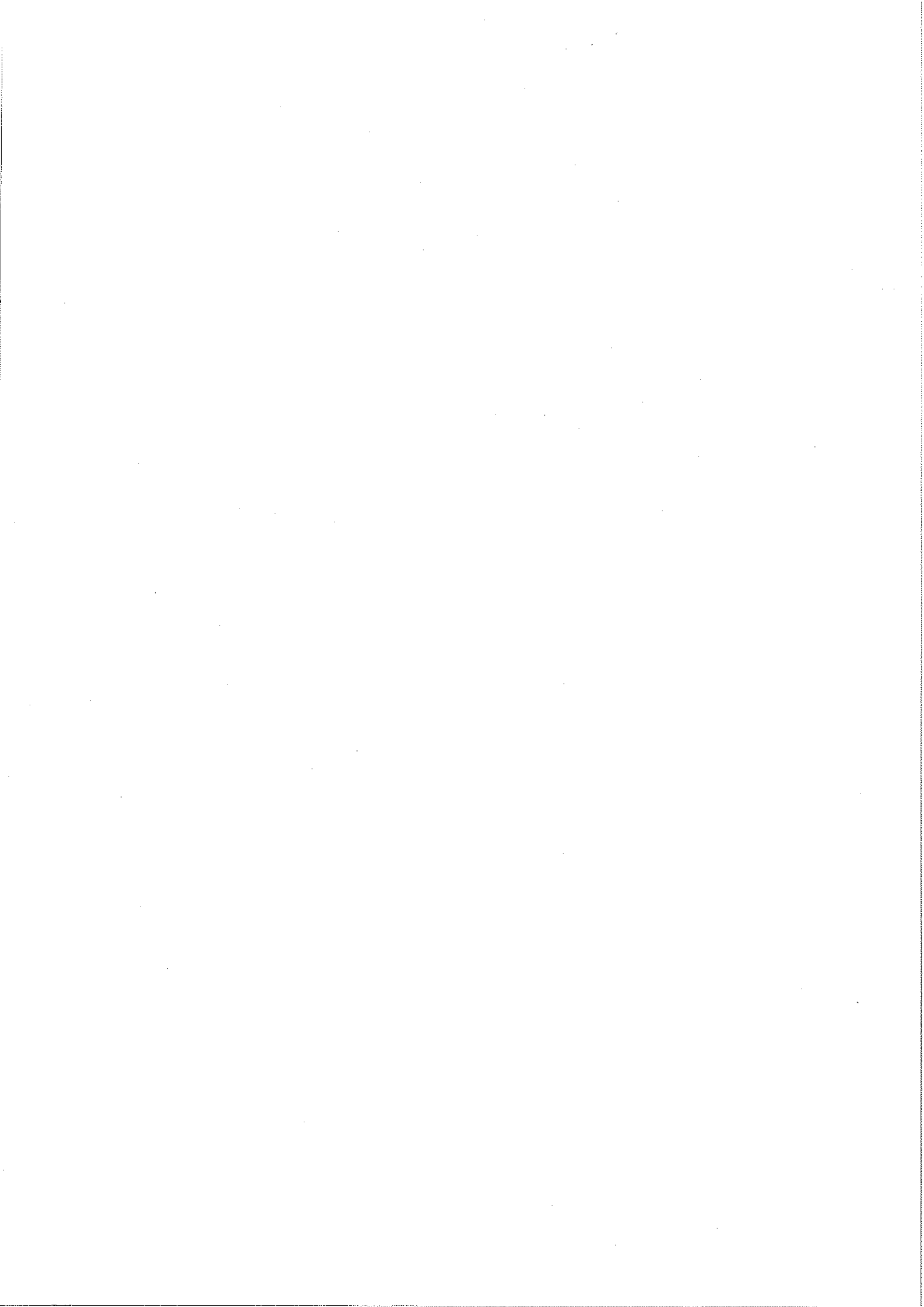




C O N T E N T S

	<u>Page</u>
1. AIMS AND OBJECTIVES	1
2. DEFINITIONS	1
3. LAND TO WHICH THIS PLAN APPLIES	1
4. APPLICATION	1

* * * * *



DEVELOPMENT CONTROL PLAN NO. 21

PROFESSIONAL CONSULTING ROOMS

Prepared in accordance with Section 72 of the Environmental Planning and Assessment Act, 1979.

1. Aims and Objectives:

To limit the proliferation of professional consulting rooms and health care professionals within residential zones immediately to the east and south of the Bowral sub-regional commercial centre.

2. Definitions

"Health care professional" means a person who renders professional health services to members of the public, and includes:

- (a) a chiropodist registered under the Chiropodists Registration Act, 1962;
- (b) a chiropractor or an osteopath or a chiropractor and an osteopath registered under the Chiropractic Act, 1978;
- (c) a physiotherapist registered under the Physiotherapists Registration Act, 1945;
- (d) an optometrist registered under the Optometrists Act, 1930.

"Professional consulting rooms" means a room or a number of rooms forming either the whole of or part of, attached to or within the curtilage of a dwelling-house and used by not more than three legally qualified medical practitioners or by not more than three dentists within the meaning of the Dentists Act, 1934, or by not more than three health care professionals, who practice therein the profession of medicine, dentistry or health care respectively, and if more than one, practise in partnership, and who employ not more than three employees in connection with that practice.

3. Land to Which the Code Applies

This code applies to all land zoned for residential purposes as depicted on Map 1 of this Development Control Plan.

4. Application

"Professional consulting rooms" and "health care professionals" are a prohibited use within the Residential 2(a) and 2(b) zones as depicted by heavy black line and cross hatching on Map 1 of this Development Control Plan.

